

L. A. Stevens & Associates, Inc.
Professional Land Surveyors
Novato, California

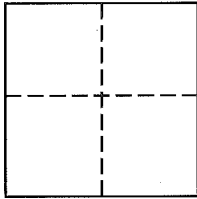
Lands of Bacciocco Enterprises LLC
Job #: 151696

CORNER RECORD

Document Number 074-101-02

Unincorporated, Kentfield, County of Marin, California

Brief Legal Description: Northerly line of Stadium Way per Record of Survey titled, "College Avenue and Kent Avenue" filed August 14, 1973, in Marin County Records Book 11 of Surveys at page 92



CORNER TYPE

Government Corner Control

Meander Property

Rancho Other

Date of Survey October 16, 2015

COORDINATES (Optional)

N _____

E _____

Zone _____ NAD27 NAD83

NAD 83 Epoch _____

Elev. _____

Vert. Datum: NGVD29 NAVD88

Meas. Units: Metric Imperial

Corner - Left as found Found and tagged Established Reestablished Rebuilt

Identification and type of corner found: Evidence used to identify or procedure used to establish or reestablish the corner:
See Page 2 of 2 for information

A description of the physical condition of the monument as found and as set or reset:
See Page 2 of 2 for information

SURVEYOR'S STATEMENT

This Corner Record was prepared by me or under my direction in conformance with
The Land Surveyor's Act on November 10, 2015.

Signed [Signature] P.L.S. 6649



COUNTY SURVEYOR'S STATEMENT

This Corner Record was received NOVEMBER 17, 2015

and examined and filed DECEMBER 3, 2015

Signed [Signature] P.L.S. or R.G.E. No. 7821

Title County Surveyor

County Surveyors' Comment _____



All distances shown are in feet and decimals thereof

LEGEND

- Found 2" Brass Disk with Punch inside a Concrete Hand Hole
- Found Rivet and Brass Tag, Stamped, LS 6649"
- Set Nail & Tag, Stamped "LS 6649"

U.N.O. Unless Noted Otherwise

or N.T.S. Not to Scale

— Wire Fence

() 1 11 ROS 92

() 2 19 ROS 24

() 3 22 ROS 57

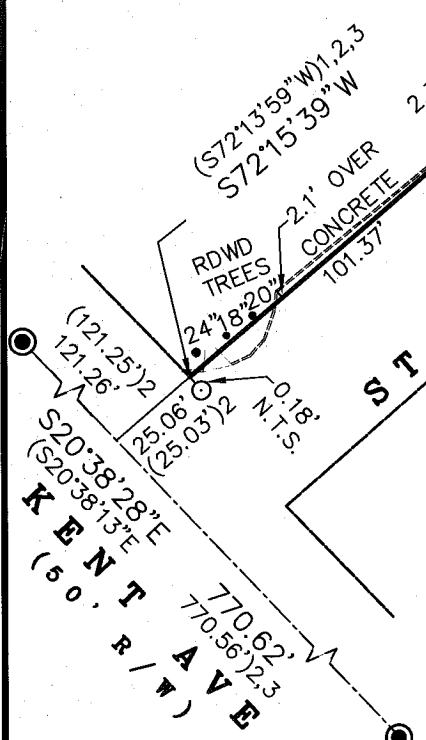
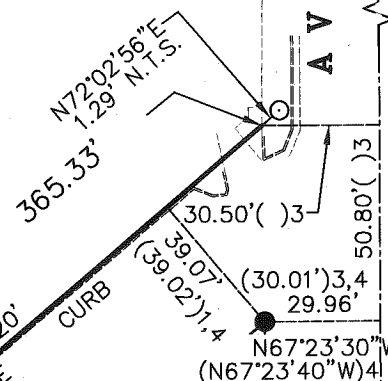
() 4 Corner Record 074-101-02

LANDS OF
MARIN UNION
JUNIOR COLLEGE

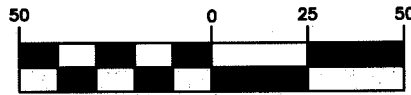
STADIUM WAY
LANDS OF
BACCIOCCO ENTERPRISES LLC
(D.N. 2006-011329)

(R/W VARIES)
COLLEGE

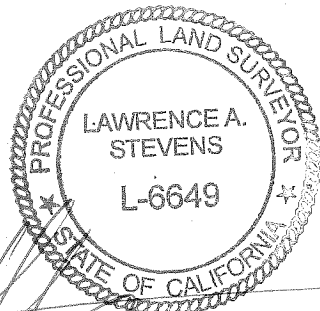
N22°36'20"E BASIS OF BEARINGS 668.82' () 3



GRAPHIC SCALE



(IN FEET)



Corner Record Lands of Bacciocco Enterprises LLC

(Northerly Line of Stadium Way per 11 ROS 92)

Kentfield Marin County California
Scale: 1" = 50' October 2015

L.A. Stevens & Associates, Inc.

Professional Land Surveyors * (415) 382-7713
7 Commercial Blvd., Suite 1 * Novato, CA 94949

Lawrence A. Stevens, PLS 6649