

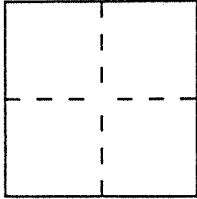
CORNER RECORD

Document Number APN 74-021-01 74-093-08

City of Kentfield Area

County of Marin, California

Brief Legal Description Lands of College of Marin: 1861 O.R. 378 and 1861 O.R. 376 (portion).



CORNER TYPE

COORDINATES (Optional)

Government Corner  Control   
Meander  Property   
Rancho  Other   
Date of Survey Sept. 30, 2003

N. \_\_\_\_\_  
E. \_\_\_\_\_  
Zone \_\_\_\_\_ Datum \_\_\_\_\_  
Elev. \_\_\_\_\_

Corner — Left as found  Found and tagged  Established  Reestablished  Rebuilt

Identification and type of corner found: Evidence used to identify or procedure used to establish or reestablish the corner:  
Purpose of this Survey was to reestablish property corners as indicated on 8 R.O.S. 23.  
See attached Exhibit 'A' for details.

A description of the physical condition of the monument as found and as set or reset: \_\_\_\_\_  
As shown on attached Exhibit 'A'.

SURVEYOR'S STATEMENT

This Corner Record was prepared by me or under my direction in conformance with the Land Surveyors' Act on Sept. 30, 2003

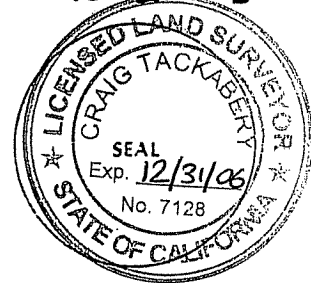
Signed John G. Stuber L.S. or R.C.E. Number LS 3303



COUNTY SURVEYOR'S STATEMENT

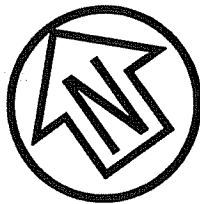
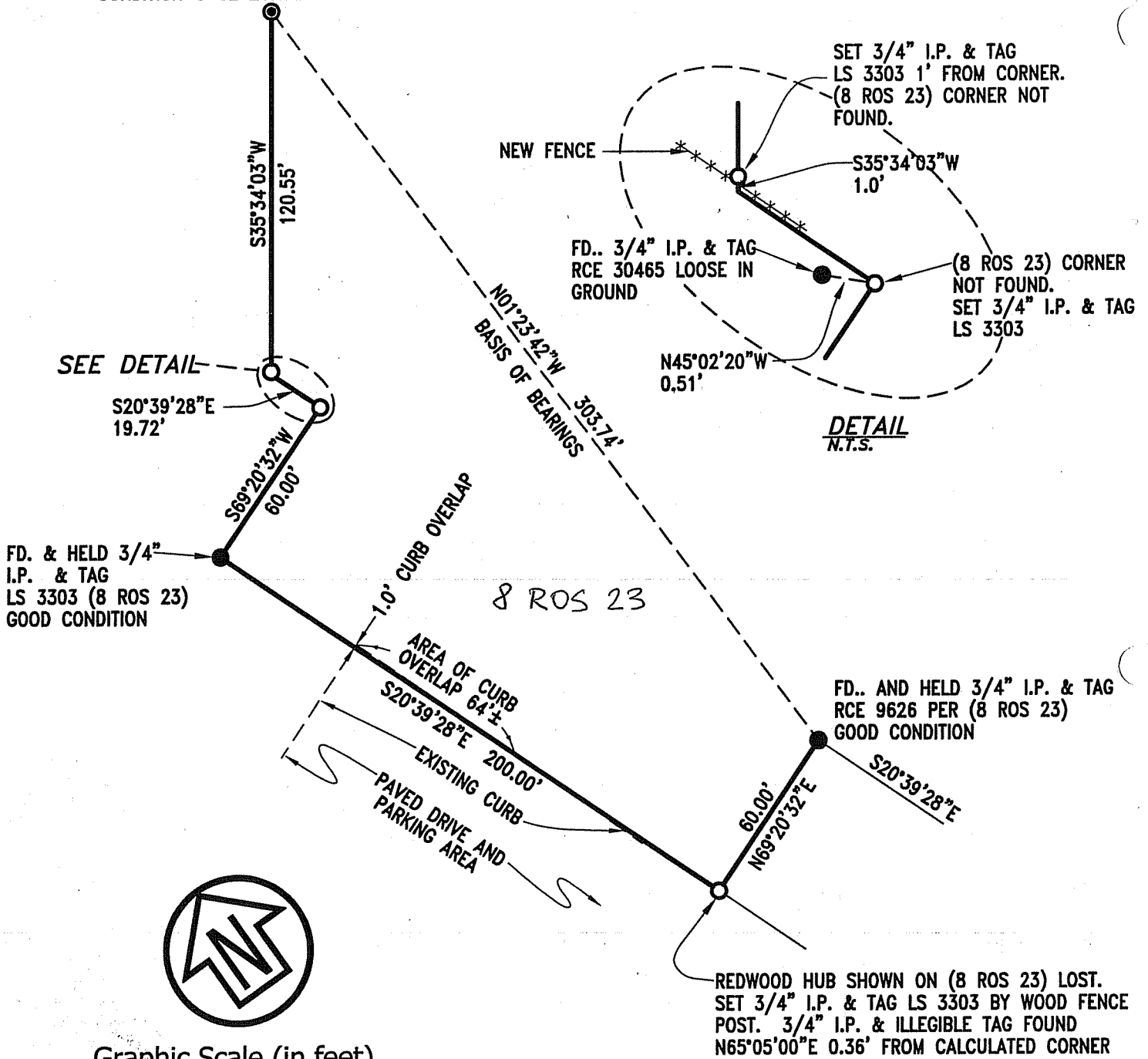
This Corner Record was received OCTOBER 27, 2003 and examined and filed NOVEMBER 10, 2003

Signed Craig Tackabery Title COUNTY SURVEYOR



County Surveyor's Comment \_\_\_\_\_

FD. & HELD STANDARD COUNTY STREET  
 MONUMENT (11 ROS 42) IN PLACE OF 3/4"  
 I.P. & TAG LS 3303, (8 ROS 23) GOOD  
 CONDITION @ CL LAUREL AVE.



Graphic Scale (in feet)



1 inch = 50 ft.

EXHIBIT "A"

**CSW**  
**[St]**<sup>2</sup> CSW/STUBER-STROEH  
 ENGINEERING GROUP, INC.  
 CONSULTING ENGINEERS  
 790 DeLong Ave., Novato, CA. 94945-3246  
 (415) 892-4763 FAX (415) 892-4502  
 © 2003

SCALE: 1" = 50'

DATE: 10/06/03

JOB NO.

3.1246.01

**CORNER RECORD**  
**SURVEY FOR COLLEGE OF**  
**MARIN, KENTFIELD CAMPUS**

KENTFIELD

MARIN COUNTY

CALIFORNIA

JOB# 3.1246.01