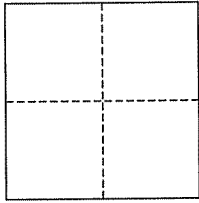


CORNER RECORD

City of Kentfield

Document Number AP# 074-082-08
County of Marin, California

Brief Legal Description Lot 109 & Lot 110, 2 RM 35



CORNER TYPE

Government Corner Control
Meander Property
Rancho Other
Date of Survey June 16, 2008

COORDINATES (Optional)

N. _____
E. _____
Zone _____ NAD27 NAD83
NAD83 Epoch _____
Elev. _____
Vert. Datum: NGVD29 NAVD88
Meas. Units: Metric Imperial

Corner- Left as found Found and tagged Established Reestablished Rebuilt

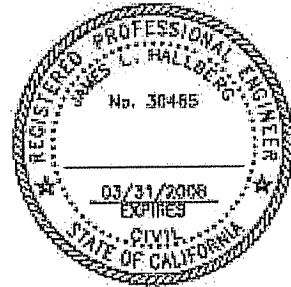
Identification and type of corner found: Evidence used to identify or procedure used to establish or reestablish the corner:
Found Iron Pipe & Plug (RCE 30465) on each end of the common line of Lots 109 and 110, per 2006 RS 112.

A description of the physical condition of the monument as found and as set or reset: Left mounuments as found with new flagging.

SURVEYOR'S STATEMENT

This corner Record was prepared by me or under my direction in conformance with the Land Surveyor's Act on June 26, 2008

Signed [Signature] P.L.S. or R.C.E. No. 30465



COUNTY SURVEYOR'S STATEMENT

This Corner Record was received JUNE 27, 2008
and examined and filed JULY 24, 2008

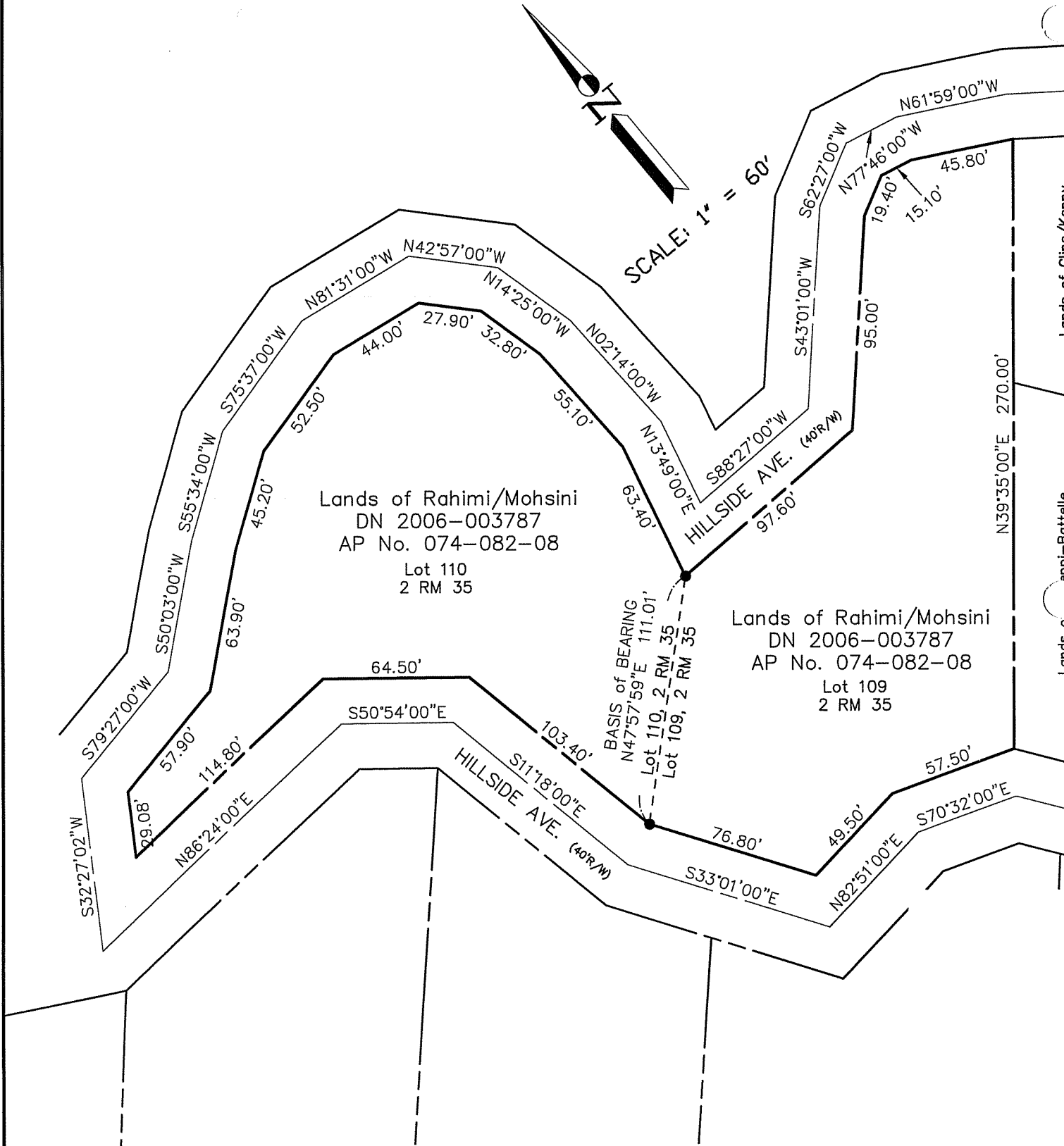
Signed [Signature] P.L.S. or R.C.E. No. 7128
Title COUNTY SURVEYOR



County Surveyor's Comment _____

LEGEND

● FOUND IP & PLUG, per 2006 RS 112



Note: All distances are in feet and decimals thereof.

SHEET	1	OF	1
SCALE:	1" = 60'	DESIGN:	PR
DATE:	Jun. 2008	DRAWN:	PR
FILE:	2007-159	CHECKED:	J.L.H

2007-159\DWG\07-159-BASE,COR-REC

J.L. ENGINEERING
 CIVIL ENGINEERS-LAND SURVEYORS
 1539 4th ST., SAN RAFAEL, CA. 94901 (415) 457-6647

Corner Record
 Lots 109 & 110, 2 RM 35
 Lands of Mohsini&Rahimi - 199 Hillside Ave.
 APN 074-082-08, Kentfield, Marin County, CA