

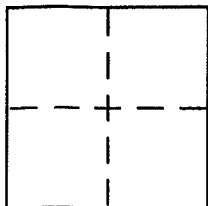
CORNER RECORD

Document Number 074-051-21

City of Kentfield

County of Marin, California

Brief Legal Description Lot 1, 10 Maps 14



CORNER TYPE

Government Corner Control
Meander Property
Rancho Other
Date of Survey 13 December 05

COORDINATES (Optional)

N. _____
E. _____
Zone _____ NAD27 NAD83
NAD83 Epoch _____
Elev. _____
Vert. Datum: NGVD29 NAVD88
Meas. Units: Metric Imperial

Corner - Left as found Found and tagged Established Reestablished Rebuilt

Identification and type of corner found: Evidence used to identify or procedure used to establish or reestablish the corner:

See Page 2 of 2

A description of the physical condition of the monument as found and as set or reset:

See page 2 of 2

SURVEYOR'S STATEMENT

This Corner Record was prepared by me or under my direction in conformance with the Land Surveyor's Act on 12/14/05

Signed [Signature] P.L.S or R.C.E. No. 6784

COUNTY SURVEYOR'S STATEMENT

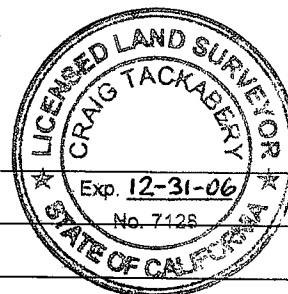
This Corner Record was received DECEMBER 19, 2005

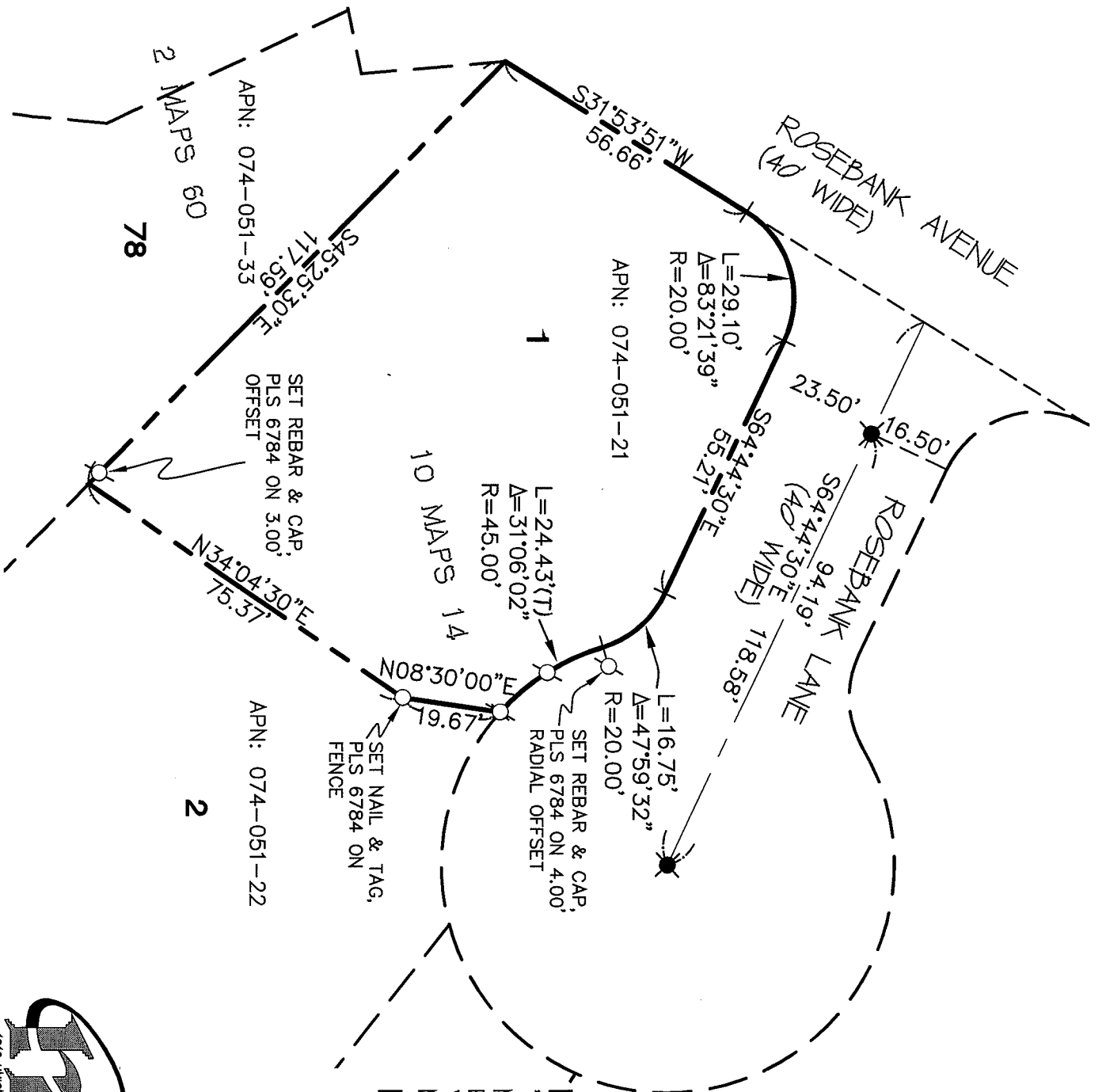
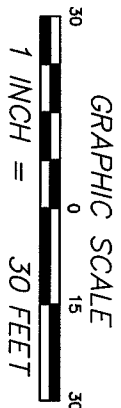
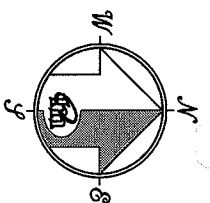
and examined and filed JANUARY 24, 2006

Signed [Signature] P.L.S or R.C.E. No. 7128

Title COUNTY SURVEYOR

County Surveyor's Comment _____





REFERENCE
 "MAP OF KENTFIELD ESTATES...
 MARIN COUNTY CALIFORNIA" FILED
 FOR RECORD FEBRUARY 26, 1959 IN
 VOLUME 10 OF MAPS, AT PAGE 14,
 MARIN COUNTY RECORDS.

LEGEND

- ⊗ FOUND CITY MONUMENT
- ⊚ SET 5/8" REBAR WITH CAP, PLS 6784
- (T) TOTAL

NOTE
 RECORD=MEASURED

CORNER RECORD



MERIDIAN SURVEYING, INC.
 1812 UNION STREET
 SAN FRANCISCO, CA 94123
 (415) 440-4131
 info@meridiansurvey.com

04142
 777 GRAND AVENUE, SUITE 202
 SAN RAFAEL, CA 94901
 (415) 456-6460