

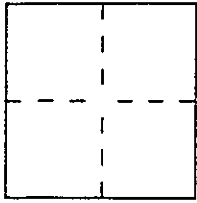
CORNER RECORD

Document Number APN 74-021-0174-093-08

City of Kentfield Area

County of Marin, California

Brief Legal Description Lands of College of Marin: 1861 O.R. 378 and 1861 O.R. 376 (portion).



CORNER TYPE

Government Corner Control
 Meander Property
 Rancho Other
 Date of Survey Sept. 30, 2003

COORDINATES (Optional)

N. _____
 E. _____
 Zone _____ Datum _____
 Elev. _____

Corner — Left as found Found and tagged Established Reestablished Rebuilt

Identification and type of corner found: Evidence used to identify or procedure used to establish or reestablish the corner:
Purpose of this Survey was to reestablish property corners as indicated on 8 R.O.S. 23.
See attached Exhibit 'A' for details.

A description of the physical condition of the monument as found and as set or reset: _____
As shown on attached Exhibit 'A'.

SURVEYOR'S STATEMENT

This Corner Record was prepared by me or under my direction in conformance with the Land Surveyors' Act on Sept. 30, 2003

Signed John G. Stuber L.S. or R.C.E. Number LS 3303



COUNTY SURVEYOR'S STATEMENT

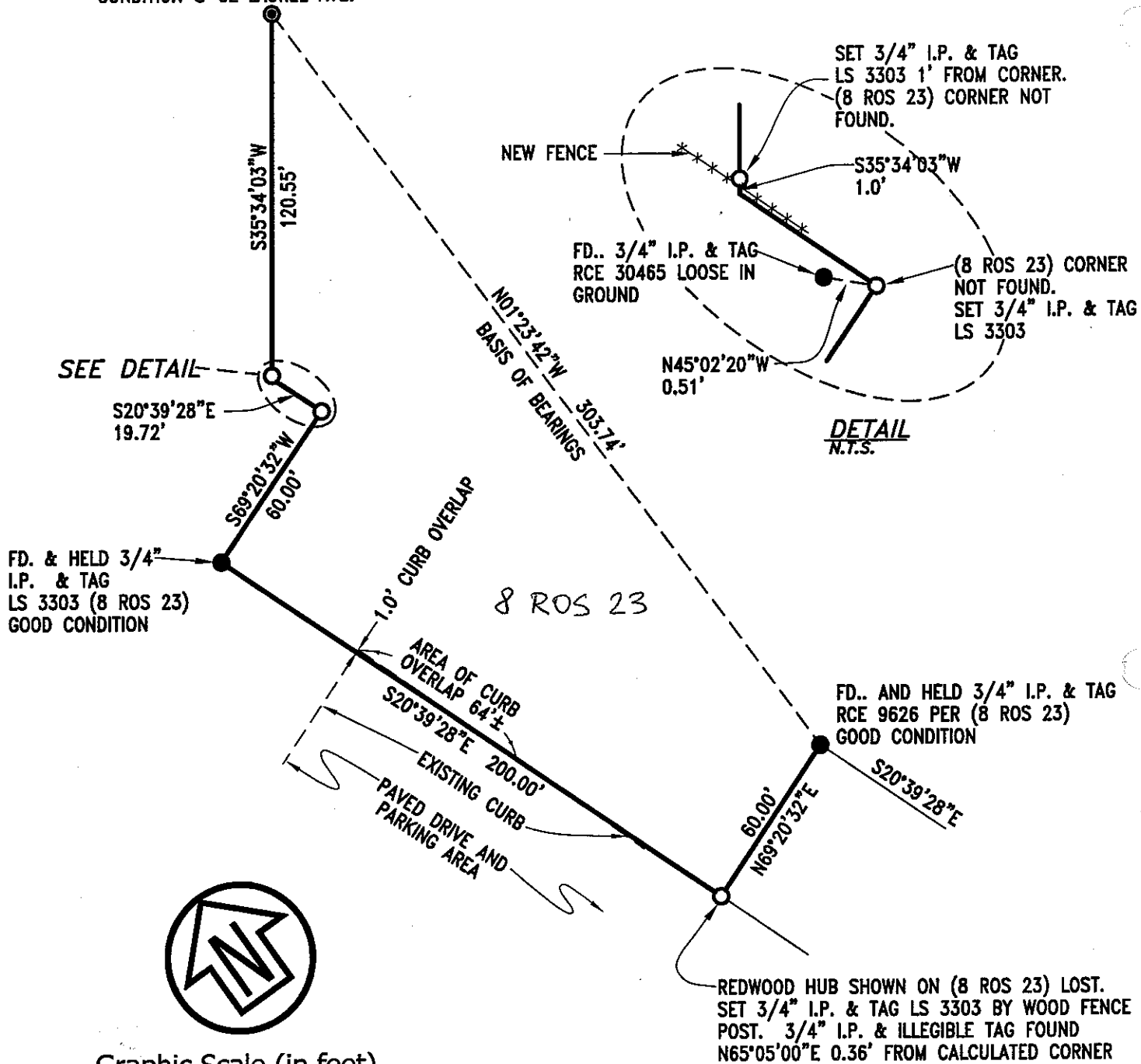
This Corner Record was received OCTOBER 27, 2003 and examined and filed NOVEMBER 10, 2003.

Signed Craig Tackabery Title COUNTY SURVEYOR



County Surveyor's Comment _____

FD. & HELD STANDARD COUNTY STREET
 MONUMENT (11 ROS 42) IN PLACE OF 3/4"
 I.P. & TAG LS 3303, (8 ROS 23) GOOD
 CONDITION @ CL LAUREL AVE.



Graphic Scale (in feet)



1 inch = 50 ft.

EXHIBIT "A"

CSW
[St]² CSW/STUBER-STROEH
 ENGINEERING GROUP, INC.
 CONSULTING ENGINEERS
 790 DeLong Ave., Novato, CA. 94945-3246
 (415) 892-4763 FAX (415) 892-4502
 © 2003

| | |
|--------------------------------|-------------------------|
| SCALE: 1"=50' | JOB NO. |
| DATE: 10/06/03 | 3.1246.01 |
| CORNER RECORD | |
| SURVEY FOR COLLEGE OF | |
| MARIN, KENTFIELD CAMPUS | |
| KENTFIELD | MARIN COUNTY CALIFORNIA |

JOB# 3.1246.01