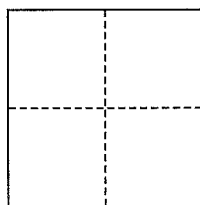


CORNER RECORD

City of Kentfield

Document Number AP# 074-011-52
County of Marin, California

Brief Legal Description Portion of lot 43, 2 RM 77



CORNER TYPE

Government Corner Control
Meander Property
Rancho Other
Date of Survey February 19, 2015

COORDINATES (Optional)

N. _____
E. _____
Zone _____ NAD27 NAD83
NAD83 Epoch _____
Elev. _____
Vert. Datum: NGVD29 NAVD88
Meas. Units: Metric Imperial

Corner- Left as found Found and tagged Established Reestablished Rebuilt

Identification and type of corner found: Evidence used to identify or procedure used to establish or reestablish the corner:
Found Iron Pipe and Plastic Plugs & Cross Cut in Sidewalk as shown hereon per 2007 RS 204.

A description of the physical condition of the monument as found and as set or reset: All Property Corners and Property Line points were set as shown hereon, per 2 RM 77

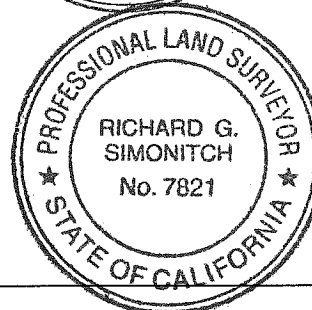
SURVEYOR'S STATEMENT

This corner Record was prepared by me or under my direction in conformance with the Land Surveyor's Act on February 27, 2015
Signed Jay A P.L.S. or R.C.E. No. 30465

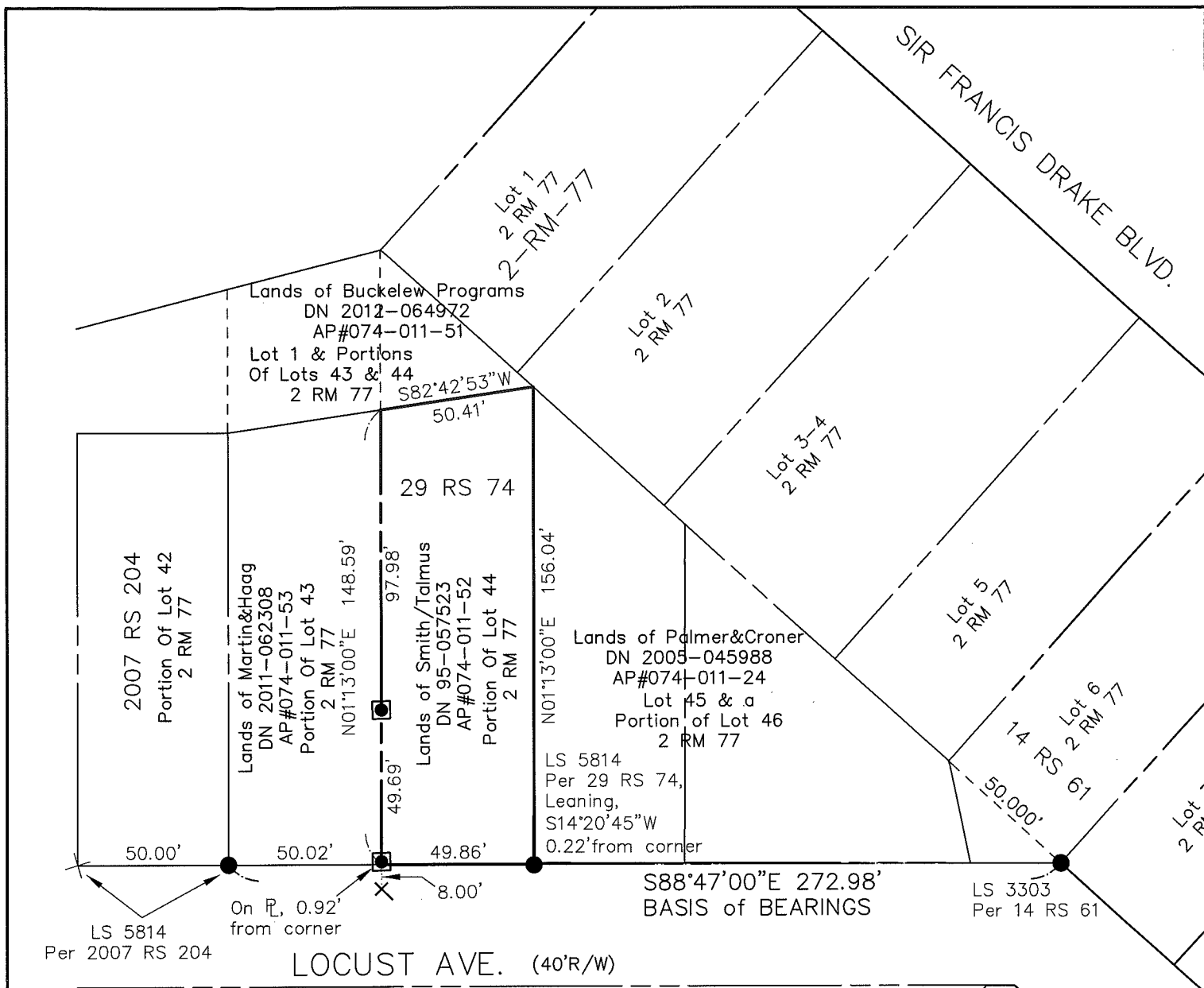


COUNTY SURVEYOR'S STATEMENT

This Corner Record was received MARCH 5, 2015
and examined and filed APRIL 7, 2015
Signed Richard G. Simonitch P.L.S. or R.C.E. No. 7821
Title Deputy



County Surveyor's Comment _____



LEGEND

- FOUND IP & PLUG, AS NOTED
- × FOUND CROSS CUT IN SIDEWALK
- × SET CROSS CUT IN CURB
- SET 2x2 HUB & TACK



Scale: 1" = 50'



Note: All distances are in feet and decimals thereof.

SHEET	1	OF	1
SCALE:	1" = 50'	DESIGN:	PR
DATE:	Feb 2015	DRAWN:	PR
FILE:	2015-016	CHECKED:	J.L.H

J.L. ENGINEERING
 CIVIL ENGINEERS-LAND SURVEYORS
 1539 4th ST., SAN RAFAEL, CA. 94901 (415) 457-6647

Corner Record
 Lands of Smith/Talmus - 14 Locust Ave.
 APN 074-011-52, Kentfield, Marin County, CA