

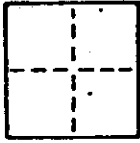
AP# 74-01

CORNER RECORD

COUNTY OF MARIN T. \_\_\_\_\_ R. \_\_\_\_\_ MERIDIAN \_\_\_\_\_ CALIFORNIA

CORNER TYPE: GOVT. CORNER  MEANDER  RANCHO  CONTROL  OTHER

CORNER IDENTIFICATION - DATE OF VISIT OCT. 19 90



CORNER - LEFT AS FOUND  FOUND AND TAGGED  REESTABLISHED OBLITERATED CORNER  RESULT

PHYSICAL DESCRIPTION OF CORNER FOUND; EVIDENCE AND METHOD USED TO IDENTIFY OR REESTABLISH

BASIS OF BEARING

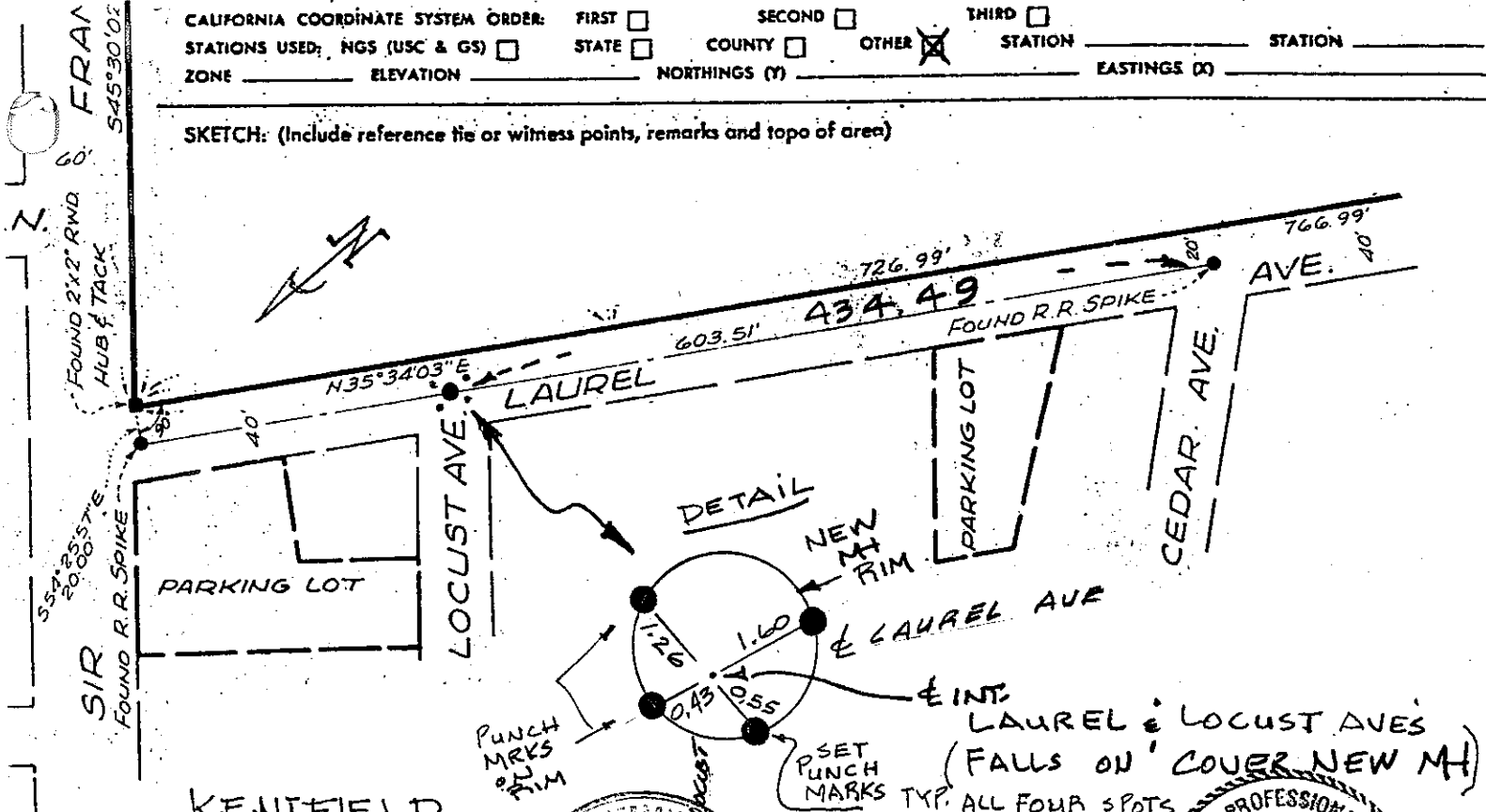
**N 35° 34' 03" E BTWN FOUND R.R SPIKES AS SHOWN ON 8 OS 23**

PHYSICAL DESCRIPTION OF MONUMENTS-REBUILT OR PERPETUATED

**FOUR PUNCH MARKS SET ON RIM NEW MANHOLE ( SEE DETAIL)**

CALIFORNIA COORDINATE SYSTEM ORDER: FIRST  SECOND  THIRD   
STATIONS USED: NGS (USC & GS)  STATE  COUNTY  OTHER  STATION \_\_\_\_\_ STATION \_\_\_\_\_  
ZONE \_\_\_\_\_ ELEVATION \_\_\_\_\_ NORTHINGS (Y) \_\_\_\_\_ EASTINGS (X) \_\_\_\_\_

SKETCH: (Include reference tie or witness points, remarks and topo of area)



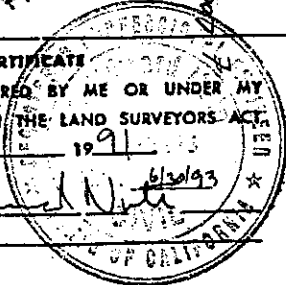
KENTFIELD

SURVEYOR'S CERTIFICATE

THIS CORNER RECORD WAS PREPARED BY ME OR UNDER MY DIRECTION IN CONFORMANCE WITH THE LAND SURVEYORS ACT ON January 19 91

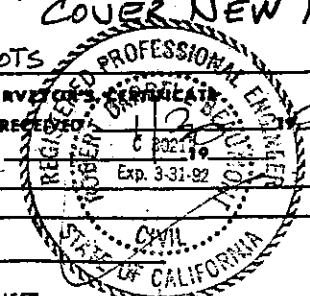
SIGNED: W. E. [Signature] 6/30/93

L.S. or R.C.E. No.: 15945



SEAL

COUNTY SURVEYOR'S CERTIFICATE  
THE CORNER RECORD WAS RECEIVED AND EXAMINED AND FILED BY: \_\_\_\_\_  
TITLE: \_\_\_\_\_  
Exp. 3-31-92



DOCUMENT No. \_\_\_\_\_

STATEMENT ON BACK OF SHEET

YES  NO