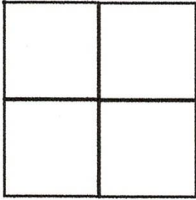


CORNER RECORD

Agency Index CR22-062
Document Number 073-311-08
County of MARIN, California

City of Ross
Brief Legal Description I.N. 2011-003241; Lots 31 & 32, 2 RM 18 "Amended Map of the Bosqui Tract"



CORNER TYPE

Government Corner Control
Meander Property
Rancho Other

Date of Survey 06/07/2022

COORDINATES (Optional)

N. _____ E. _____
Elevation _____
Units Metric U.S. Survey Foot
Horizontal Datum _____
Zone _____ Epoch Date _____
Vertical Datum _____

Complies with Public Resources Code §§8801-8819
 Complies with Public Resources Code §§8890-8902

PLS Act Ref: 8765(d) 8771 8773 Other:

Corner/Monument: Left as found Established Rebuilt Pre-Construction
 Found and tagged Reestablished Referenced Post-Construction

Narrative of corner identified and monument as found, set, reset, replaced, or removed:
 See sheet #2 for description (s):

SURVEYOR'S STATEMENT

This Corner Record was prepared by me or under my direction in conformance with the Professional Land Surveyors' Act on June 13, 2022

Signed [Signature] P.L.S. or R.C.E. No. 6649



COUNTY SURVEYOR'S STATEMENT

This Corner Record was received 06/14/2022

and examined and filed 06/23/2022

Signed T. W. Park P.L.S. or R.C.E. No. 8176

Title County Surveyor



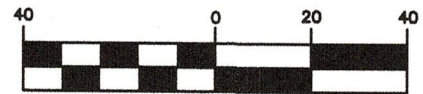
County Surveyor's Comment _____

All distances shown are in feet and decimals thereof

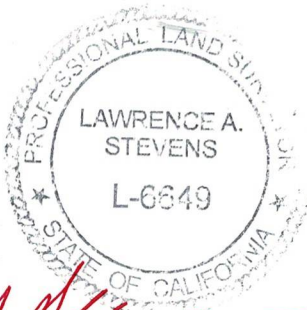
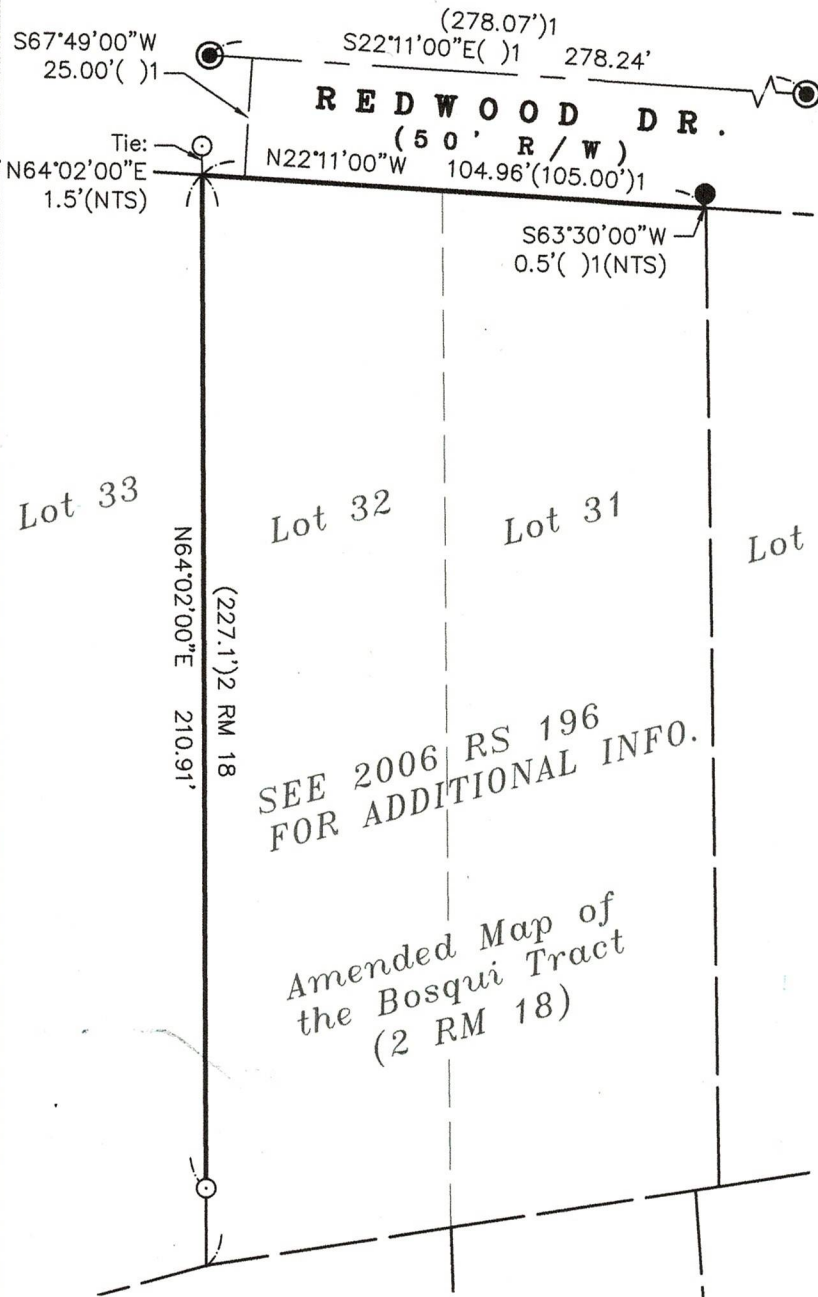
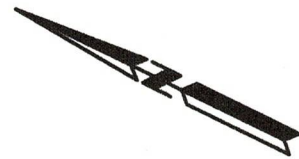
LEGEND

- Found 3/4" Iron Pipe & Plastic Plug Stamped "LS 6649"
- ⊙ Found Rail-Road Spike with Punch in Standard Monument Well
- Set 5/8" Rebar & Punched Aluminum Cap, Stamped "LA STEVENS PLS 6649"
- ()1 2006 RS 196

GRAPHIC SCALE



(IN FEET)



6-13-2022

**CORNER RECORD
LANDS OF
WYNNE FAMILY TR.**

(Lots 31 & 32, 2 RM 18)
TOWN OF ROSS

MARIN COUNTY
SCALE: 1" = 40'

CALIFORNIA
JUNE, 2022

L.A. Stevens & Associates, Inc.

Professional Land Surveyors * (415) 382-7713
7 Commercial Blvd., Suite 1 * Novato, CA 94949

Job # 222211

Lawrence A. Stevens, PLS 6649

Copyright © Lawrence A. Stevens 2022