

L. A. Stevens & Associates, Inc.
Professional Land Surveyors
Novato, California

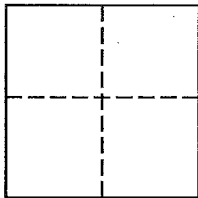
Lands of Wenger
Job #: 14-1605

CORNER RECORD

Document Number 073-273-25

Town of Ross, County of Marin, California

Brief Legal Description: Being a portion of the southwesterly line as described in DN2008-030574 as shown per, "ROS Corte Madera Creek Area in the Town of Ross" filed in Book 10 of Surveys, at Page 60, Marin County Records.



CORNER TYPE

COORDINATES (Optional)

Government Corner Control
Meander Property
Rancho Other

N _____
E _____
Zone _____ NAD27 NAD83
NAD 83 Epoch _____
Elev. _____
Vert. Datum: NGVD29 NAVD88
Meas. Units: Metric Imperial

Date of Survey September 8, 2014

Corner - Left as found Found and tagged Established Reestablished Rebuilt

Identification and type of corner found: Evidence used to identify or procedure used to establish or reestablish the corner:
See Page 2 of 2 for additional information

A description of the physical condition of the monument as found and as set or reset:
See Page 2 of 2 for additional information

SURVEYOR'S STATEMENT

This Corner Record was prepared by me or under my direction in conformance with
The Land Surveyor's Act on February 10, 2015.

Signed [Signature] P.L.S. 6649



COUNTY SURVEYOR'S STATEMENT

This Corner Record was received FEBRUARY 13, 2015
and examined and filed APRIL 6, 2015

Signed [Signature] P.L.S. or R.C.E. No. 7821

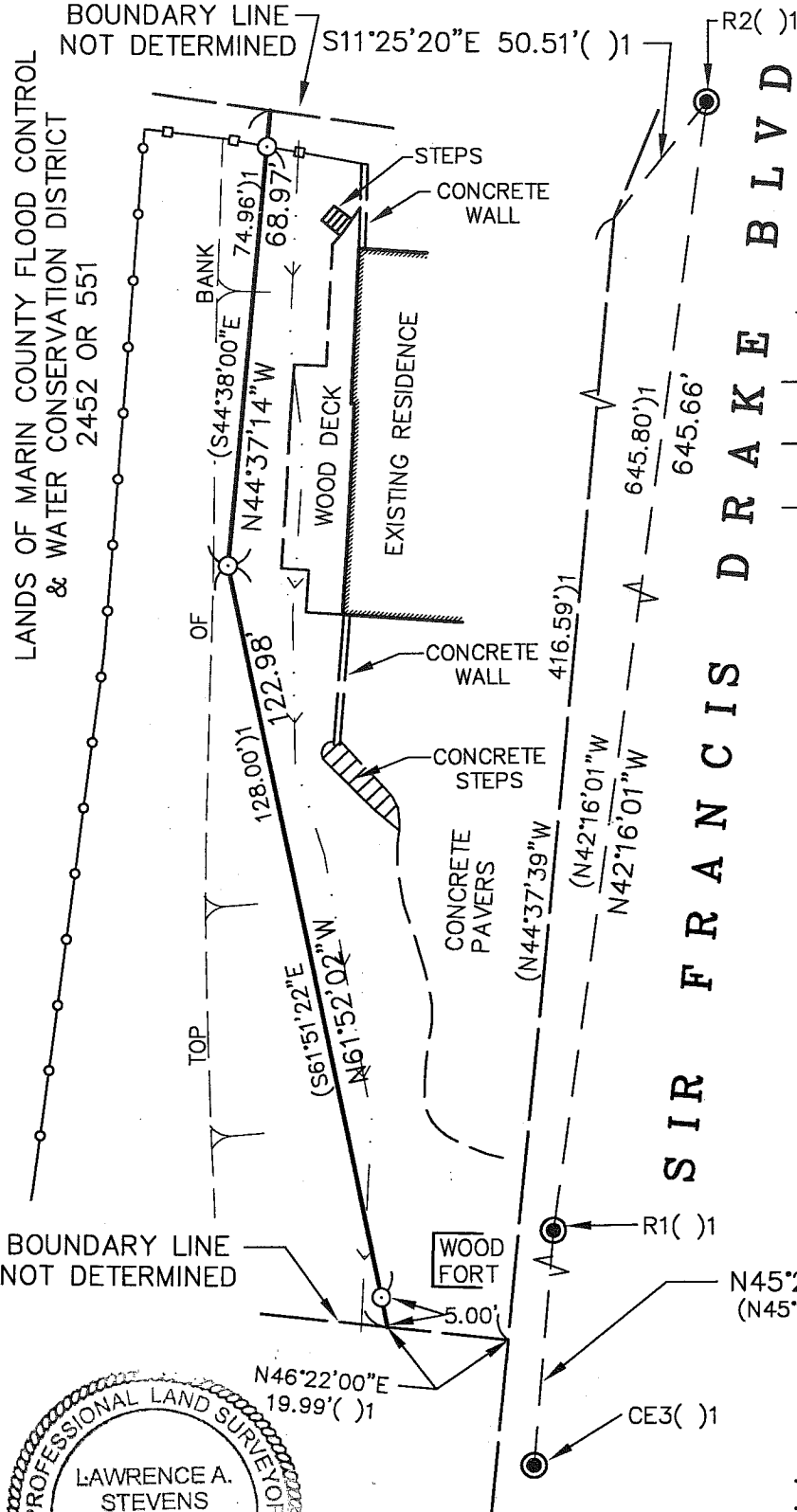
Title DEPUTY

County Surveyors' Comment _____



All distances shown are in feet and decimals thereof

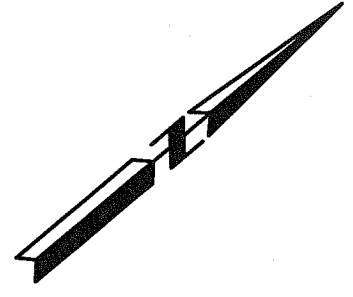
LEGEND



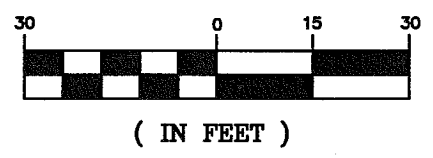
- ⊙ Found 2 1/2" Brass Disc in Concrete
- Set 5/8" Rebar and 1 1/2" Aluminum Cap with Punch, Stamped "LA STEVENS PLS 6649"

- U.N.O. Unless Noted Otherwise
- Wood Fence
- Chain Link Fence
- Flow Line Earth Swale

()1 Record Ground Distance. Obtained by multiplying Grid Distances shown on 10 ROS 60 by 1.000064



GRAPHIC SCALE



Corner Record Lands of Wenger

(Southwesterly Line as described in DN2008-030574 per 10 OS 60)
 Ross Marin County California
 Scale: 1" = 30' September 14, 2014

L.A. Stevens & Associates, Inc.

Professional Land Surveyors * (415) 382-7713
 7 Commercial Blvd., Suite 1 * Novato, CA 94949

Lawrence A. Stevens, PLS 6649