

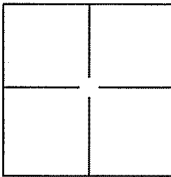
CORNER RECORD

Document Number A.P.N. 073-272-09

City of Ross

County of Marin, California

Brief Legal Description Ptn. Lot 17, 16 Ross Common, 27 OS 32.



CORNER TYPE

Government Corner Control
 Meander Property
 Rancho Other

Date of Survey 20 July 2010

COORDINATES(Optional)

N. _____
 E. _____
 Zone _____ NAD27N AD83
 NAD83 Epoch _____
 Elev. _____
 Vert. Datum: NGVD29 NADV88
 Meas. Units: Metric Imperial

Corner - Left as found Found and tagged Established Reestablished Rebuilt

Identification and type of corner found: Evidence used to identify or procedure used to establish or reestablish the corner:

Found 3/4" Iron Pipe and Yellow Cap, L.S. 5814 (2) and 1-1/2" Iron Pipe and Tack (1)
per 27 OS 32.

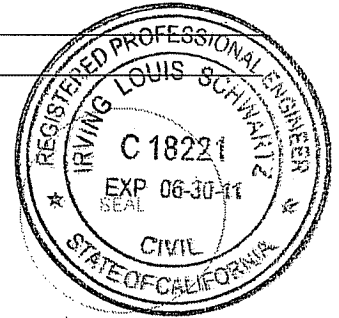
A description of the physical condition of the monument as found and as set or reset:

Set NW, SW and SE corners (3 corners) on Ptn. Lot 17, per 27 OS 32, See Exhibit "A".

SURVEYOR'S STATEMENT

This Corner Record was prepared by me or under my direction in conformance with the Land Surveyor's Act on JULY 27, 2010

Signed [Signature] P.L.S. or R.C.E. No.: 18221



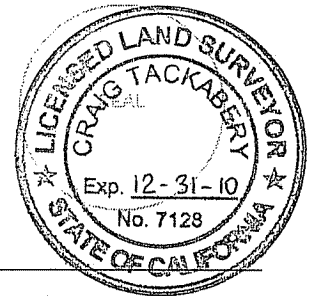
COUNTY SURVEYOR'S STATEMENT

This Corner Record was received JULY 28, 2010 and examined and filed AUGUST 3, 2010

Signed [Signature] P.L.S. or R.C.E. No.: 7128

Title COUNTY SURVEYOR

County Surveyor's Comment _____





ILS ASSOCIATES, INC.®
 Civil Engineering & Land Surveying
 79 Galli Drive, Suite A
 Novato, Ca 94949-5717
 (415)883-9200 FAX (415)883-2763

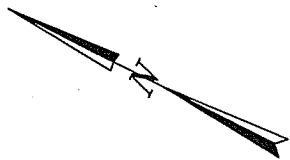
DRAWN:
SJM

JOB NO:
8484

DATE:
07/21/10

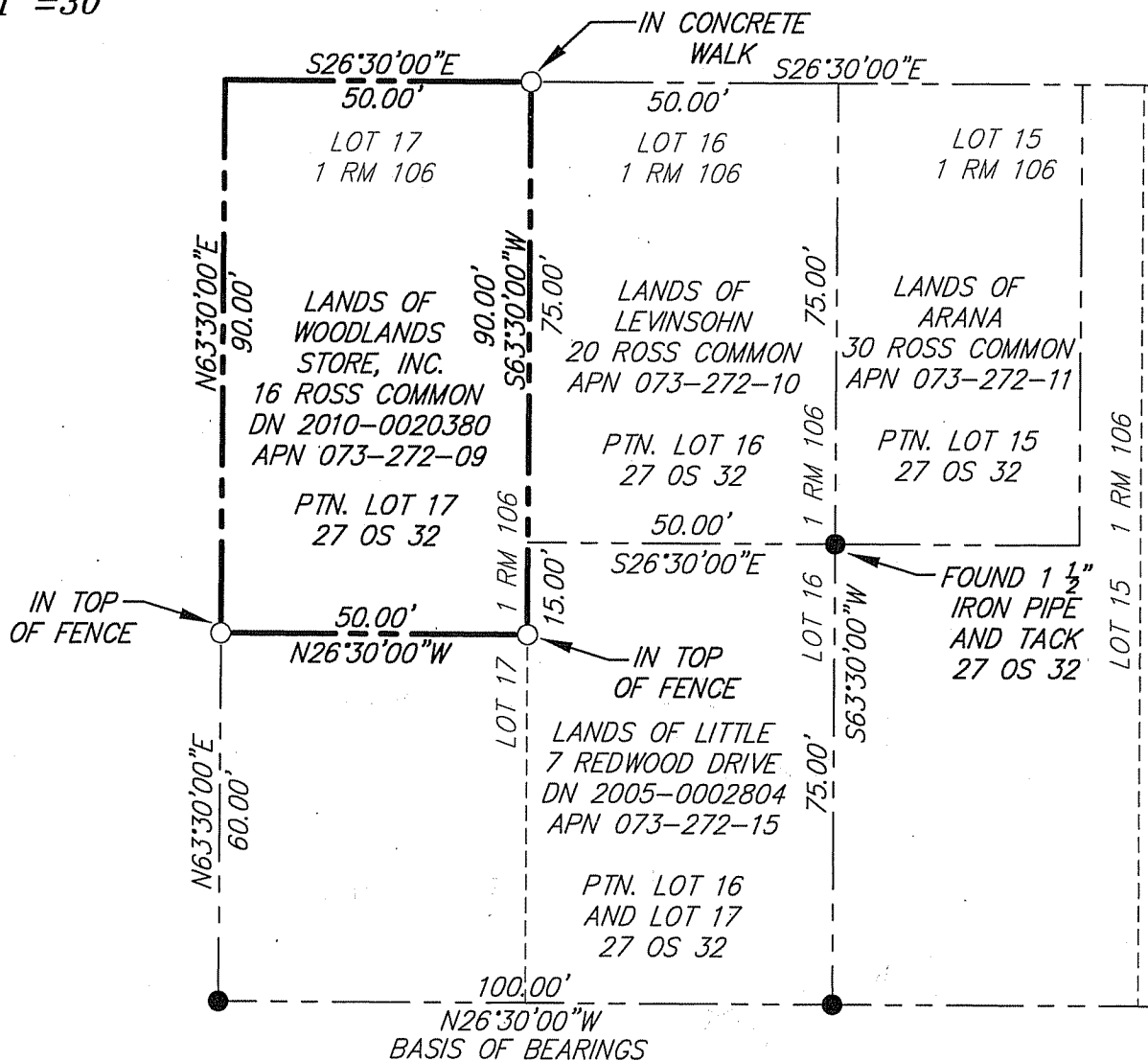
SHEET NO.
2 OF 2

EXHIBIT A



SCALE: 1"=30'

ROSS COMMON (50' R/W)



REDWOOD DR. (50' R/W)

LEGEND

- SET BRASS NAIL AND TAG "R.C.E. 18221"
- FOUND 3/4" IRON PIPE & YELLOW CAP, LS 5814, PER 27 OS 32, EXCEPT AS NOTED OTHERWISE.

NOTE:

ALL DIMENSIONS AND BEARINGS SHOWN HEREON ARE PER 27 OS 32.