

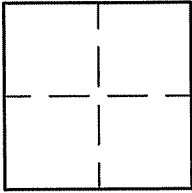
CORNER RECORD

Document Number A.P.N. 073-261-10

City of ROSS

County of MARIN, California

Brief Legal Description PORTION OF LOT 126, 2 R.M. 38



CORNER TYPE                      COORDINATES (Optional)

Government Corner       Control

Meander                       Property

Rancho                       Other

Date of Survey 05/26/08

N. \_\_\_\_\_  
 E. \_\_\_\_\_  
 Zone \_\_\_\_\_ NAD27       NAD83   
 NAD83 Epoch \_\_\_\_\_  
 Elev. \_\_\_\_\_  
 Vert. Datum:      NGVD29       NAVD88   
 Meas. Units:      Metric       Imperial

Corner-    Left as found     Found and tagged     Established     Reestablished     Rebuilt

Identification and type of corner found: Evidence used to identify or procedure used to establish or reestablish the corner:  
SET ANGLE POINT OF PROPERTY LINE AND POINT ON LINE PER FOUND 3/4" PIPES AND PLUGS (L.S. 3775)  
PER 34 O.S. 52 AND AS SHOWN ON SHEET 2.

A description of the physical condition of the monument as found and as set or reset: SEE SHEET 2.

SURVEYOR'S STATEMENT

This Corner Record was prepared by me or under my direction in conformance with

the Land Surveyor's Act on MAY 26 2008

Signed Lawrence P Doyle      P.L.S. or R.C.E. No. P.L.S. 4694



COUNTY SURVEYOR'S STATEMENT

This Corner Record was received JULY 15, 2008

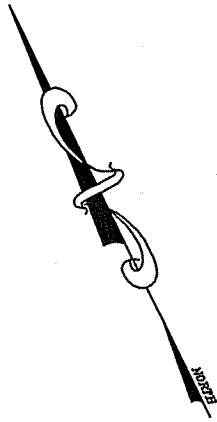
and examined and filed AUGUST 5, 2008

Signed [Signature]      P.L.S. or R.C.E. No. 30212

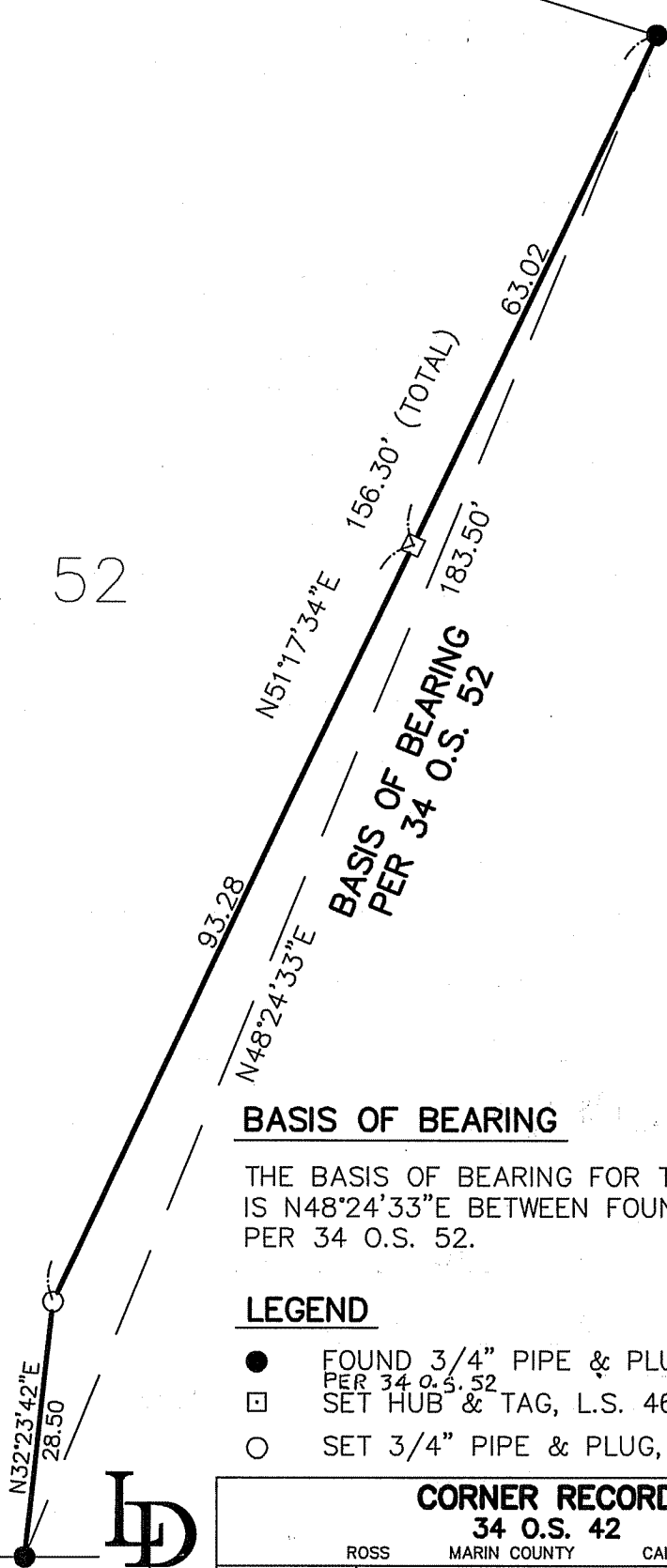
Title DEPUTY COUNTY SURVEYOR

County Surveyor's Comment \_\_\_\_\_





34 O.S. 52



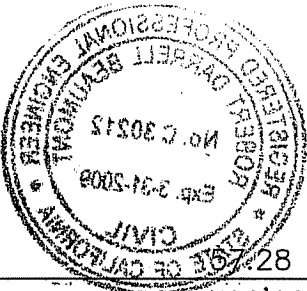
**BASIS OF BEARING**

THE BASIS OF BEARING FOR THIS SURVEY IS N48°24'33\"E BETWEEN FOUND PIPES PER 34 O.S. 52.

**LEGEND**

- FOUND 3/4" PIPE & PLUG, L.S. 3775 PER 34 O.S. 52
- SET HUB & TAG, L.S. 4694
- SET 3/4" PIPE & PLUG, L.S. 4694

<b>CORNER RECORD</b>	
<b>34 O.S. 42</b>	
ROSS	MARIN COUNTY CALIFORNIA
SCALE: 1" = 20'	DRAWN BY:
DATE: 06/2008	<b>LAWRENCE P. DOYLE</b>
LAND SURVEYOR/CIVIL ENGINEER	
100 HELENS LANE MILL VALLEY CA 94941 (415-388-9585)	
DRAWING NO.	
1799-CR	



S64°00'00"E

**ALLEN LANE**

20' R/W

