

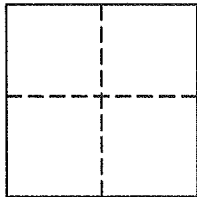
Lands of Coan & Delgado
Job #: 161724

CORNER RECORD

Document Number 073-252-14

Town of Ross in County of Marin, California

Brief Legal Description: Being a portion of the westerly lines of that land described in document number 2015-0046070, and shown on that Record of Survey of the Lands of Abramowitz, filed in book 2000 of maps, at page 154, Marin County Records, and that Record of Survey of the Lands of O'Neill, filed in Book 27 of Surveys, at page 54, Marin County Records.



CORNER TYPE

COORDINATES (Optional)

Government Corner Control

Meander Property

Rancho Other

Date of Survey March 7, 2016

N _____

E _____

Zone _____ NAD27 NAD83

NAD 83 Epoch _____

Elev. _____

Vert. Datum: NGVD29 NAVD88

Meas. Units: Metric Imperial

Corner - Left as found Found and tagged Established Reestablished Rebuilt

Identification and type of corner found: Evidence used to identify or procedure used to establish or reestablish the corner:
See Page 2 of 2 for information

A description of the physical condition of the monument as found and as set or reset:
See Page 2 of 2 for information

SURVEYOR'S STATEMENT

This Corner Record was prepared by me or under my direction in conformance with

The Land Surveyor's Act on May 23, 2016.

Signed [Signature] P.L.S. 6649



COUNTY SURVEYOR'S STATEMENT

This Corner Record was received MARCH 15, 2016

and examined and filed AUGUST 24, 2016

Signed [Signature] P.L.S. or R.C.E. No. 7821

Title County Surveyor

County Surveyors' Comment _____



All distances shown are in feet and decimals thereof

LEGEND

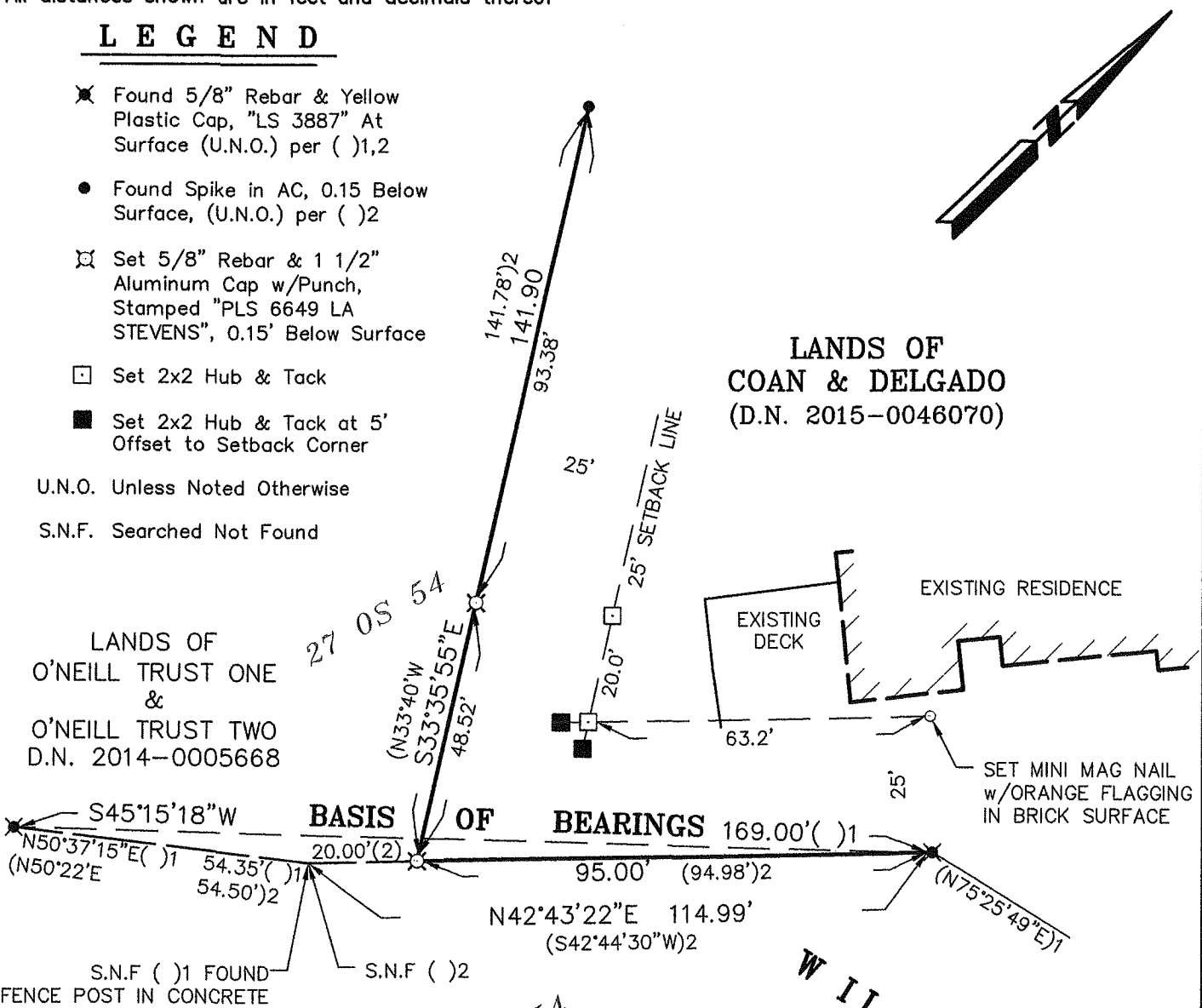
- ✱ Found 5/8" Rebar & Yellow Plastic Cap, "LS 3887" At Surface (U.N.O.) per ()1,2
- Found Spike in AC, 0.15 Below Surface, (U.N.O.) per ()2
- ⊠ Set 5/8" Rebar & 1 1/2" Aluminum Cap w/Punch, Stamped "PLS 6649 LA STEVENS", 0.15' Below Surface
- Set 2x2 Hub & Tack
- Set 2x2 Hub & Tack at 5' Offset to Setback Corner

U.N.O. Unless Noted Otherwise

S.N.F. Searched Not Found

LANDS OF
O'NEILL TRUST ONE
&
O'NEILL TRUST TWO
D.N. 2014-0005668

LANDS OF
COAN & DELGADO
(D.N. 2015-0046070)

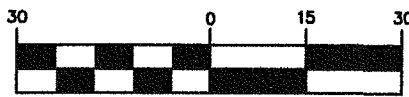


REFERENCES

- ()1 2000 M 154, Recorded 8/31/2000
- ()2 27 OS 54, Recorded 7/10/1990

LANDS OF
9WH LLC
D.N. 2013-0025147

GRAPHIC SCALE



Lawrence A. Stevens, PLS 6649

**Corner Record
Lands of Coan & Delgado**

(D.N. 2015-0046070)

Ross Marin County California
Scale: 1" = 30' May, 2016

L.A. Stevens & Associates, Inc.

Professional Land Surveyors * (415) 382-7713
7 Commercial Blvd., Suite 1 * Novato, CA 94949