

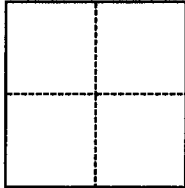
CORNER RECORD

Agency Index CR24-002
Document Number 073-241-05

City of ROSS County of MARIN, California
Brief Legal Description PORTION OF LANDS OF CONWAY D.N. 1999-0010212

CORNER TYPE

COORDINATES (Optional)



- Government Corner
- Meander
- Rancho
- Control
- Property
- Other

N. _____ E. _____

Elevation _____

Units Metric U.S. Survey Foot

Horizontal Datum _____

Zone _____ Epoch Date _____

Vertical Datum _____

Complies with Public Resources Code §§8801-8819

Complies with Public Resources Code §§8890-8902

PLS Act Ref.: 8765(d) 8771 8773 Other:

Corner/Monument: Left as found Established Rebuilt Pre-Construction

Found and tagged Reestablished Referenced Post-Construction

Narrative of corner identified and monument as found, set, reset, replaced, or removed:

See sheet #2 for description(s):

SURVEYOR'S STATEMENT

This Corner Record was prepared by me or under my direction in conformance with

the Professional Land Surveyors' Act on January 10, 2024

Signed Linda A. Carruthers P.L.S. or R.C.E. No. 7053



COUNTY SURVEYOR'S STATEMENT

This Corner Record was received January 16, 2024

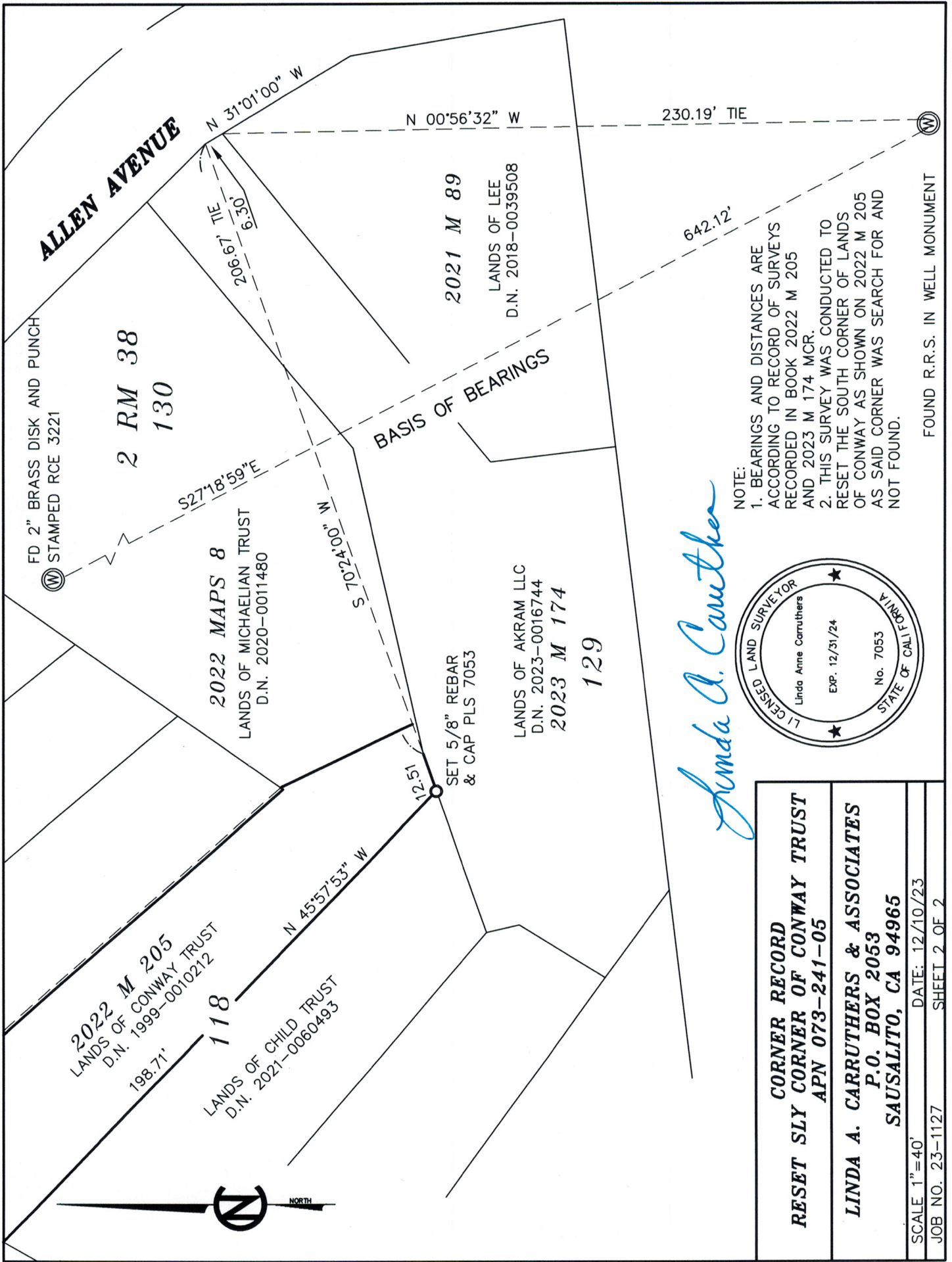
and examined and filed January 17, 2024

Signed T.W. Park P.L.S. [REDACTED] No. 8176

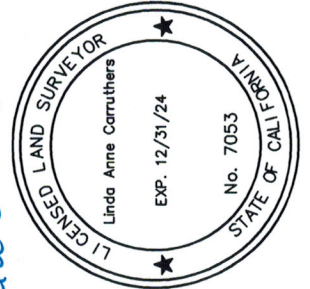
Title County Surveyor

County Surveyor's Comment





NOTE:
 1. BEARINGS AND DISTANCES ARE ACCORDING TO RECORD OF SURVEYS RECORDED IN BOOK 2022 M 205 AND 2023 M 174 MCR.
 2. THIS SURVEY WAS CONDUCTED TO RESET THE SOUTH CORNER OF LANDS OF CONWAY AS SHOWN ON 2022 M 205 AS SAID CORNER WAS SEARCH FOR AND NOT FOUND.



Linda A. Carruthers

CORNER RECORD
RESET SLY CORNER OF CONWAY TRUST
APN 073-241-05
LINDA A. CARRUTHERS & ASSOCIATES
P.O. BOX 2053
SAUSALITO, CA 94965
SCALE 1"=40'
DATE: 12/10/23
JOB NO. 23-1127
SHEET 2 OF 2

FOUND R.R.S. IN WELL MONUMENT