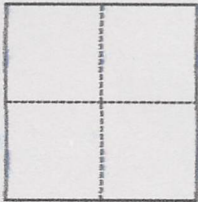


# CORNER RECORD

Agency Index 20-073Document Number 073-232-32City of ROSS County of MARIN, CaliforniaBrief Legal Description MARIN ASSESSORS PARCEL 073-232-32**CORNER TYPE**

- Government Corner  Control  
 Meander  Property  
 Rancho  Other

Date of Survey September 18, 2020**COORDINATES (Optional)**

N. \_\_\_\_\_ E. \_\_\_\_\_

Elevation \_\_\_\_\_

Units  Metric  U.S. Survey Foot

Horizontal Datum \_\_\_\_\_

Zone \_\_\_\_\_ Epoch Date \_\_\_\_\_

Vertical Datum \_\_\_\_\_

 Complies with Public Resources Code §§8801-8819 Complies with Public Resources Code §§8890-8902PLS Act Ref.:  8765(d)  8771  8773  Other:Corner/Monument:  Left as found  Established  Rebuilt  Pre-Construction Found and tagged  Reestablished  Referenced  Post-Construction

Narrative of corner identified and monument as found, set, reset, replaced, or removed:

 See sheet #2 for description(s):

This work is to perpetuate the positions of Pt. "A", an open 2" Iron Pipe, and Pt. "B" open 1.5" Iron Pipe, as shown on the ROS 2019 M 57. After new paving was placed on Thomas Court we installed a 2 1/2" disk stamped PLS 5290 and Standard Well Monument on Pt. "A", and installed a 3/4" Iron Pipe and cap LS 5290 for Pt "B". (see sheet two for particulars)

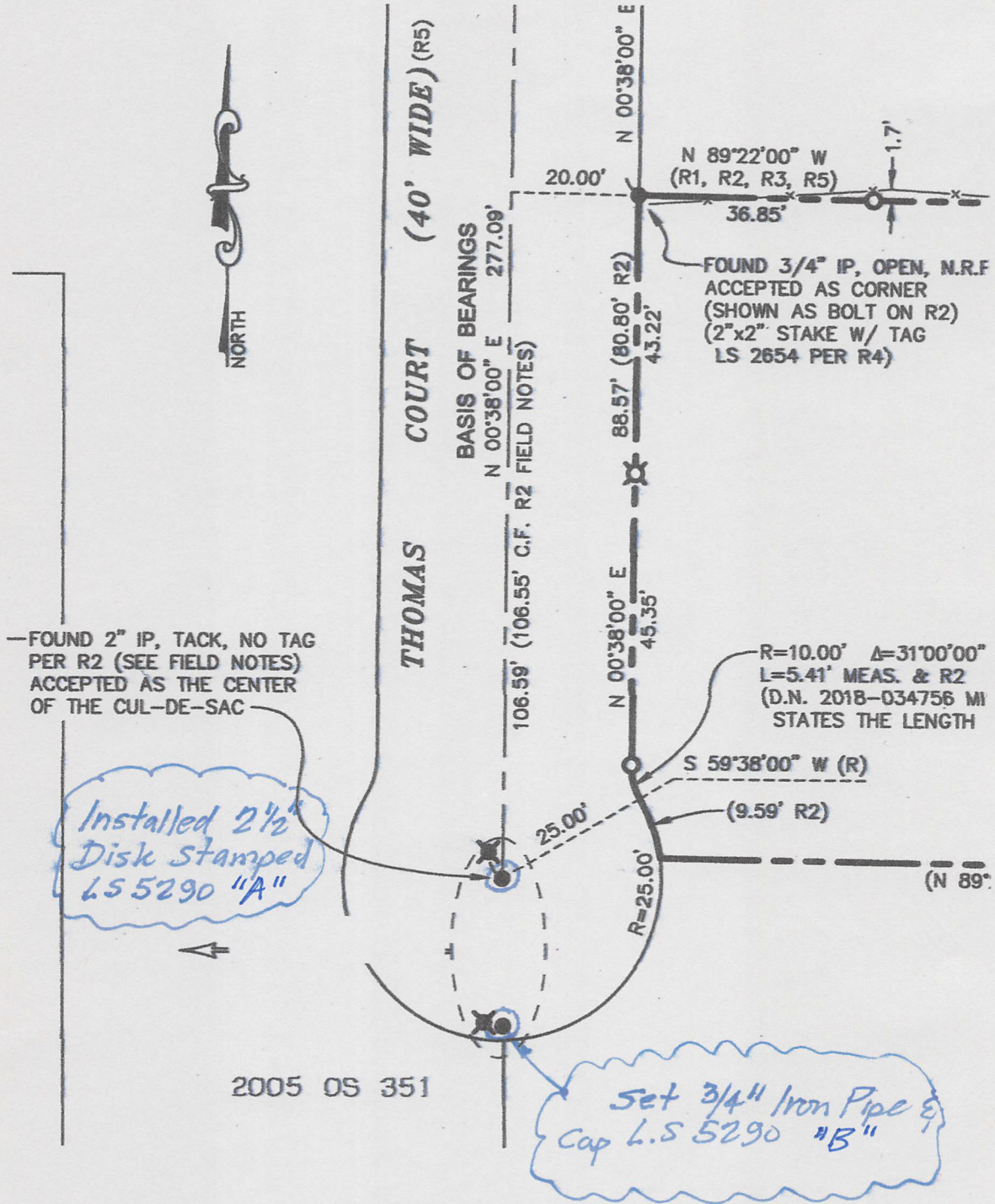
**SURVEYOR'S STATEMENT**

This Corner Record was prepared by me or under my direction in conformance with

the Professional Land Surveyors' Act on October 14, 2020Signed David Hays P.L.S. or R.C.E. No. PLS 5290**COUNTY SURVEYOR'S STATEMENT**This Corner Record was received 10/19/2020and examined and filed 12/04/2020Signed [Signature] P.L.S. or R.C.E. No. 9292Title DEPUTY C.S.

County Surveyor's Comment





*PLAT of SURVEY  
 (portion of 2019 M 57)  
 not to scale*