

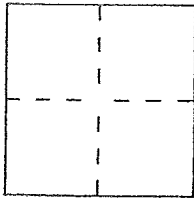
CORNER RECORD

Document Number 73-211-38

City of Ross

County of Marin, California

Brief Legal Description Marin Assessors Parcel 73-211-38



CORNER TYPE

Government Corner Control
Meander Property
Rancho Other
Date of Survey _____

COORDINATES
(Optional)

N. _____
E. _____
Zone _____ Datum _____
Elev. _____

Corner — Left as found Found and tagged Established Reestablished Rebuilt

Identification and type of corner found: Evidence used to identify or procedure used to establish or reestablish the corner:

Found Iron Pipe Monuments along the Westerly
line of 2006 RS 80 (see "Survey Plat" over)

A description of the physical condition of the monument as found and as set or reset: _____

set 1/2" rebar with cap embossed LS 5290

SURVEYOR'S STATEMENT

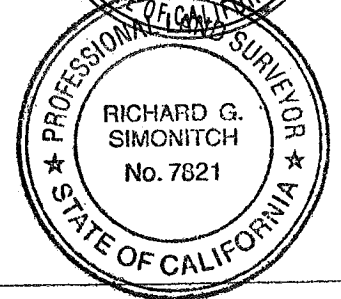
This Corner Record was prepared by me or under my direction in conformance with
the Land Surveyors' Act on Jan 16, 2015

Signed David Harp L.S. or R.C.E. Number LS 5290

COUNTY SURVEYOR'S STATEMENT

This Corner Record was received November 25, 2015 and examined

and filed December 7, 2015
Signed Richard G. Simonitch Title County Surveyor



County Surveyor's Comment _____

Indicates Set 1/2 rebar
1/2 Cap Embossed L55290 (typical)

ROAD

73-211-38

56.41

69.00

88.00

55.00

16' Access Esm't

88.93

53.83

255.89
(256.03)4

113.13

500°35'52"W
Basis of Bearings

Found 3/4" Iron Pipe & Tag,
"R.C.E. 15816", per 28 ROS 44

Point "B"
Found 3/4" Iron Pipe
& Tag, "R.C.E. 10057",
per 6 ROS 89

2006 RS 80

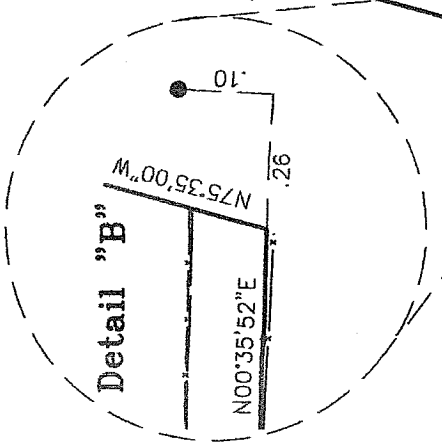
LANDS OF
OSTLER
(DN 2005-062778)

Information inside cloud
added by this surveyor

15' Road And Utility Easement
Bk. 1741 O.R. Pg. 180

(285.33)2 (282.0 ±)6
284.89

LANDS OF
HANSON
(DN 2005-002785)



LAGUNITAS

60' R/W

170.04

N75°35'00"W

573.00

RECORD OF SURVEY
"2006 RS 80"

"PLAT OF SURVEY"
(not to scale)

588°15'E
16.00