

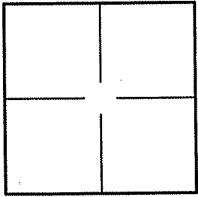
CORNER RECORD

Document Number A.P.73-211-22

City of ROSS

County of MARIN, California

Brief Legal Description LANDS OF OSTLER PER 32 O.S. 47



CORNER TYPE COORDINATES (Optional)

Government Corner Control
Meander Property
Rancho Other
Date of Survey 6/2/2009

N. _____
E. _____
Zone _____ NAD27 NAD83
NAD83 Epoch _____
Elev. _____
Vert. Datum: NGVD29 NAVD88
Meas. Units: Metric Imperial

Corner: Left as found Found and tagged Established Reestablished Rebuilt

Identification and type of corner found: Evidence used to identify or procedure used to establish or reestablish the corner:
REESTABLISHED LANDS OF OSTLER AS SHOWN ON 32 O.S 47 BY USING FOUND POINTS EITHER SET OR FOUND
BY 32 O.S. 47 AND AS SHOWN ON SHEET 2.

A description of the physical condition of the monument as found and as set or reset: SEE SHEET 2.

SURVEYOR'S STATEMENT

This Corner Record was prepared by me or under my direction in conformance with

the Land Surveyor's Act on JUNE 3, 2009.

Signed Lawrence P. Doyle P.L.S. or R.C.E. No. P.L.S. 4694



COUNTY SURVEYOR'S STATEMENT

This Corner Record was received JUNE 8, 2009

and examined and filed JULY 6, 2009

Signed [Signature] P.L.S. or R.C.E. No. 7128

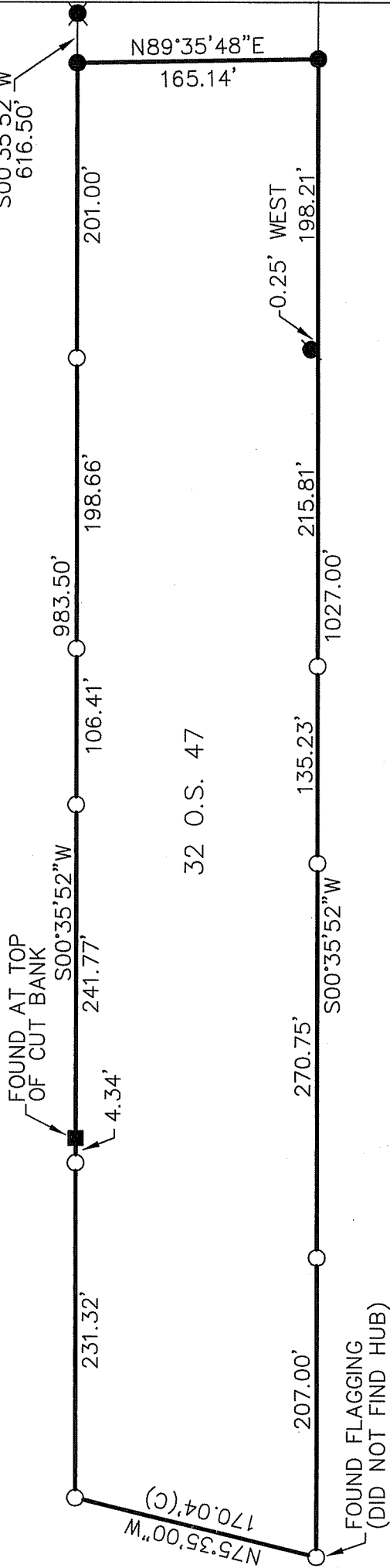
Title COUNTY SURVEYOR

County Surveyor's Comment _____





BASIS OF BEARING
 S00°35'52"W
 616.50'



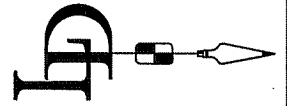
32 O.S. 47

BASIS OF BEARING

THE BASIS OF BEARING FOR THIS SURVEY IS BETWEEN FOUND POINTS PER 32 O.S. 47.

LEGEND

- FOUND PIPE/PLUG RE 18221 PER 32 O.S. 47
- ⊗ FOUND PIPE/TAG RE 10057 SHOWN ON 32 O.S. 47 AT LAGUNITAS ROAD
- FOUND REBAR/CAP LS 4694 SHOWN ON 32 O.S. 47
- SET 3/4" PIPE/PLUG L.S. 4694
- FOUND HUB RE 10057 SHOWN ON 32 O.S. 47
- (C) CALCULATED



CORNER RECORD
 32 O.S. 47
 MARIN COUNTY CALIFORNIA

SCALE: 1" = 100'
 DATE: 6/3/09

DRAWN BY:
 SHEET 2 OF 2

LAWRENCE P. DOYLE
 LAND SURVEYOR/CIVIL ENGINEER
 100 HELENS LANE MILL VALLEY CA 94941 (415-388-9585)
 DRAWING NO. 1899