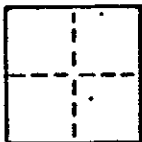


CORNER RECORD AP# 73-082-10

COUNTY OF MARIN T. _____ R. _____ MERIDIAN _____ CALIFORNIA

CORNER TYPE: GOVT. CORNER MEANDER RANCHO CONTROL OTHER

CORNER IDENTIFICATION — DATE OF VISIT JUNE 1990



CORNER — LEFT AS FOUND FOUND AND TAGGED REESTABLISHED OBLITERATED CORNER REBUILT

PHYSICAL DESCRIPTION OF CORNER FOUND; EVIDENCE AND METHOD USED TO IDENTIFY OR REESTABLISH

BASIS OF BEARING
FOUND IRON PIPES AS SHOWN
12 OS 62
ROSS

PHYSICAL DESCRIPTION OF MONUMENTS REBUILT OR PERPETUATED

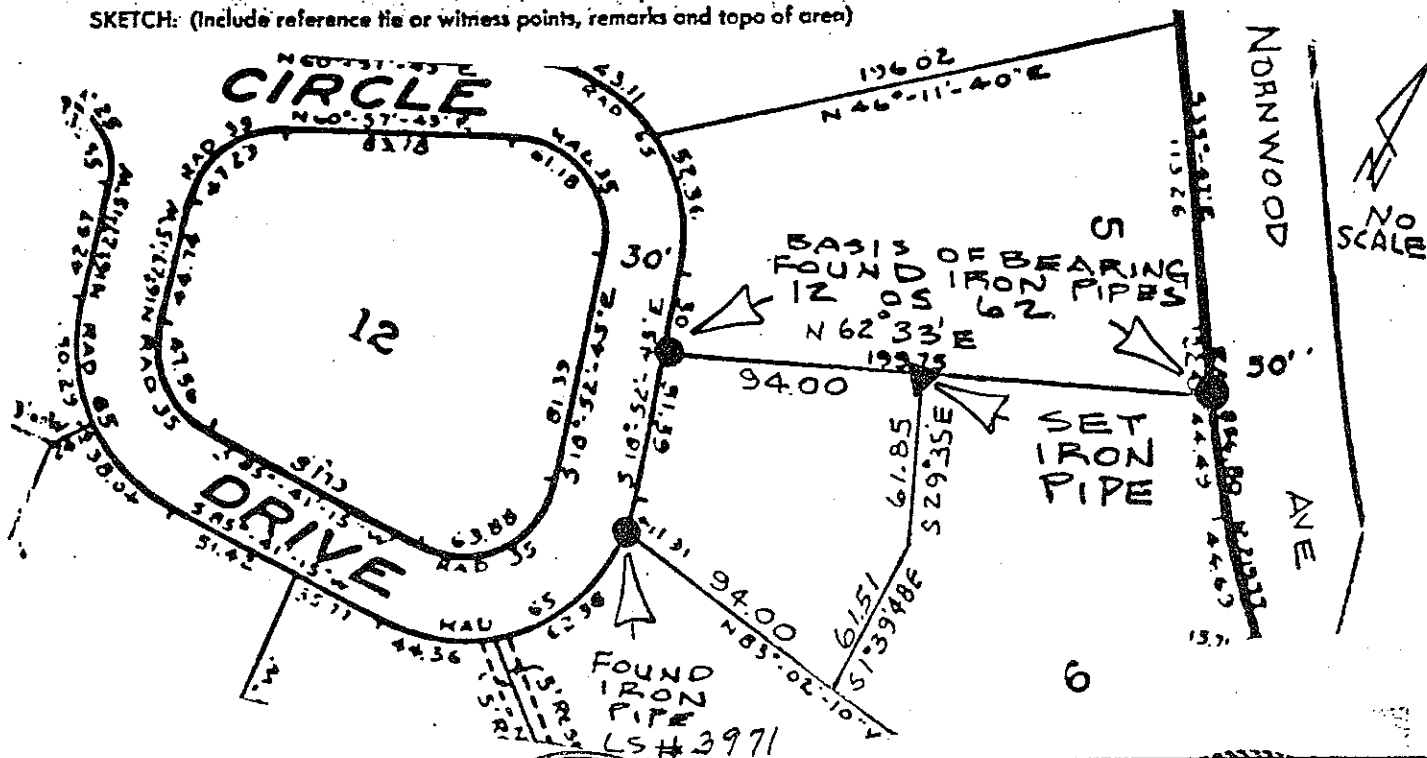
SET IRON PIPE & PLUG RCE# 15945

CALIFORNIA COORDINATE SYSTEM ORDER: FIRST SECOND THIRD

STATIONS USED: NGS (USC & GS) STATE COUNTY OTHER STATION _____ STATION _____

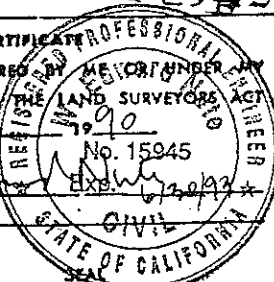
ZONE _____ ELEVATION _____ NORTHINGS (N) _____ EASTINGS (E) _____

SKETCH: (Include reference tie or witness points, remarks and topo of area)



SURVEYOR'S CERTIFICATE

THIS CORNER RECORD WAS PREPARED BY MEYOR ANDERSON IN THE
 DIRECTION IN CONFORMANCE WITH THE LAND SURVEYORS ACT
 ON JUNE 29 1990
 No. 15945
 SIGNED: W. G. Anderson
 L.S. or R.C.E. No. RCE 15945



COUNTY SURVEYOR

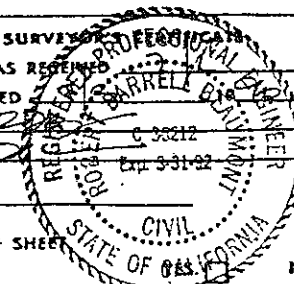
THE CORNER RECORD WAS RECEIVED AND EXAMINED AND FILED

BY: ROBERT BARRELL

TITLE: REGISTERED PROFESSIONAL ENGINEER

DOCUMENT No. _____

STATEMENT ON BACK OF SHEET

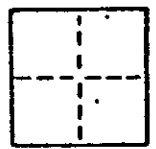


CORNER RECORD AP# 73-082-10

COUNTY OF MARIN T. _____ R. _____ MERIDIAN CALIFORN

CORNER TYPE: GOVT. CORNER MEANDER RANCHO CONTROL OTHER

CORNER IDENTIFICATION — DATE OF VISIT JUNE 19 90



CORNER — LEFT AS FOUND FOUND AND TAGGED REESTABLISHED OBLITERATED CORNER RESULT

PHYSICAL DESCRIPTION OF CORNER FOUND, EVIDENCE AND METHOD USED TO IDENTIFY OR REESTABLISH

BASIS OF BEARING
FOUND IRON PIPES AS SHOWN
12 OS 62
ROSS

PHYSICAL DESCRIPTION OF MONUMENTS, RESULT OR PERPETUATED

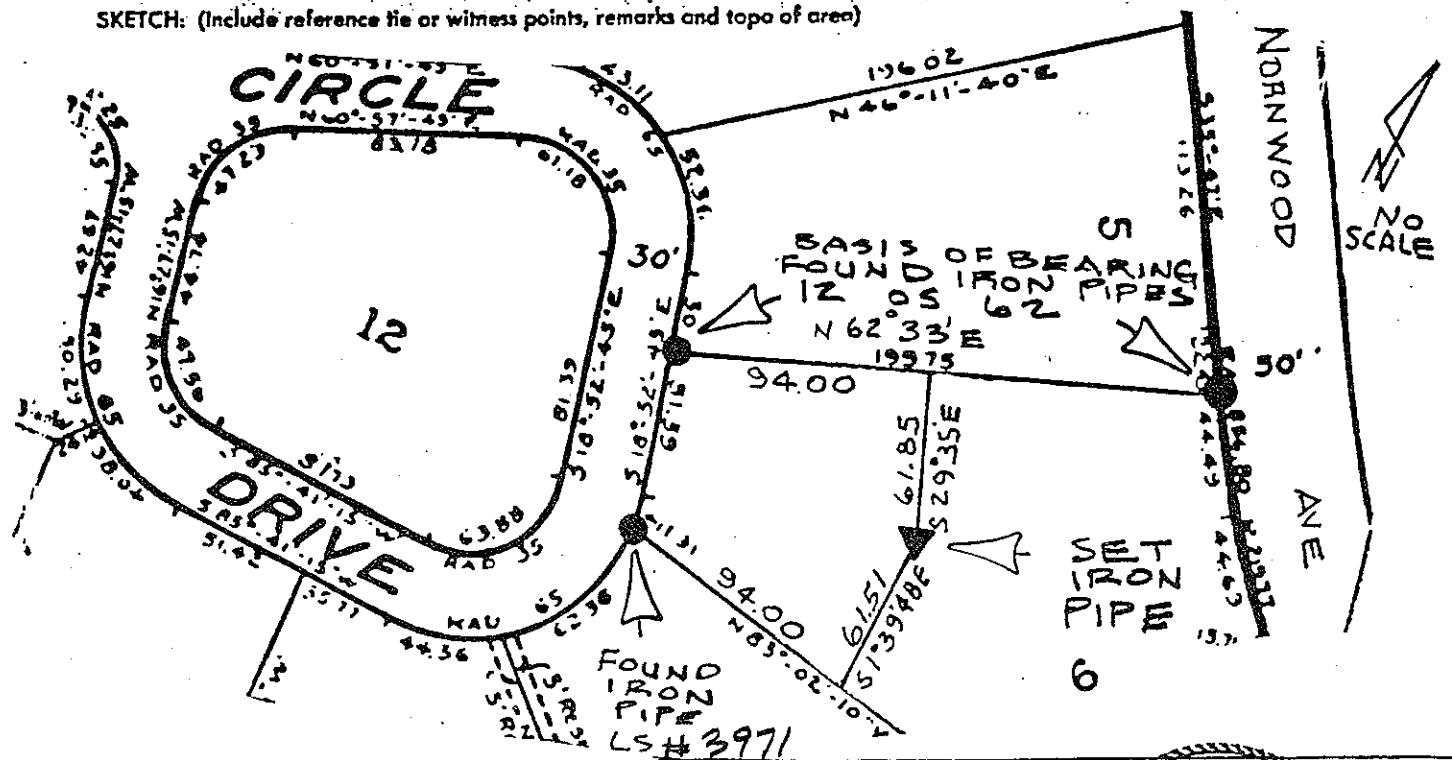
SET IRON PIPE & PLUG RCE# 15945

CALIFORNIA COORDINATE SYSTEM ORDER: FIRST SECOND THIRD

STATIONS USED: NGS (USC & GS) STATE COUNTY OTHER STATION _____ STATION _____

ZONE _____ ELEVATION _____ NORTHINGS (N) _____ EASTINGS (E) _____

SKETCH: (Include reference tie or witness points, remarks and topo of area)



SURVEYOR'S CERTIFICATE

THIS CORNER RECORD WAS PREPARED BY ME OR UNDER MY SUPERVISION AND IN CONFORMANCE WITH THE PROVISIONS OF THE SURVEYORS ACT ON June 19 1990

SIGNED: W. S. [Signature]

L.S. or R.C.E. No. RCE 15945

COUNTY SURVEYOR'S OFFICE

THE CORNER RECORD WAS RECEIVED BY ME OR UNDER MY SUPERVISION AND EXAMINED AND FILED IN BOOK 190 PAGE 80

BY: [Signature] C 30212

TITLE: AP# 73-082-10 Exp. 3-31-92

DOCUMENT No. _____

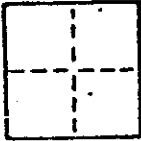
STATEMENT ON BACK OF SHEET OF CALIFORNIA

CORNER RECORD AP# 73-082-10

COUNTY OF MARIN T. _____ R. _____ MERIDIAN _____ CALIFORNIA

CORNER TYPE: GOVT. CORNER MEANDER RANCHO CONTROL OTHER

CORNER IDENTIFICATION — DATE OF VISIT JUNE 19 90



CORNER — LEFT AS FOUND FOUND AND TAGGED REESTABLISHED OBLITERATED CORNER REBUILT

PHYSICAL DESCRIPTION OF CORNER FOUND; EVIDENCE AND METHOD USED TO IDENTIFY OR REESTABLISH

BASIS OF BEARING
FOUND IRON PIPES AS SHOWN
 12 OS 62
 ROSS

PHYSICAL DESCRIPTION OF MONUMENTS, REBUILT OR PERPETUATED

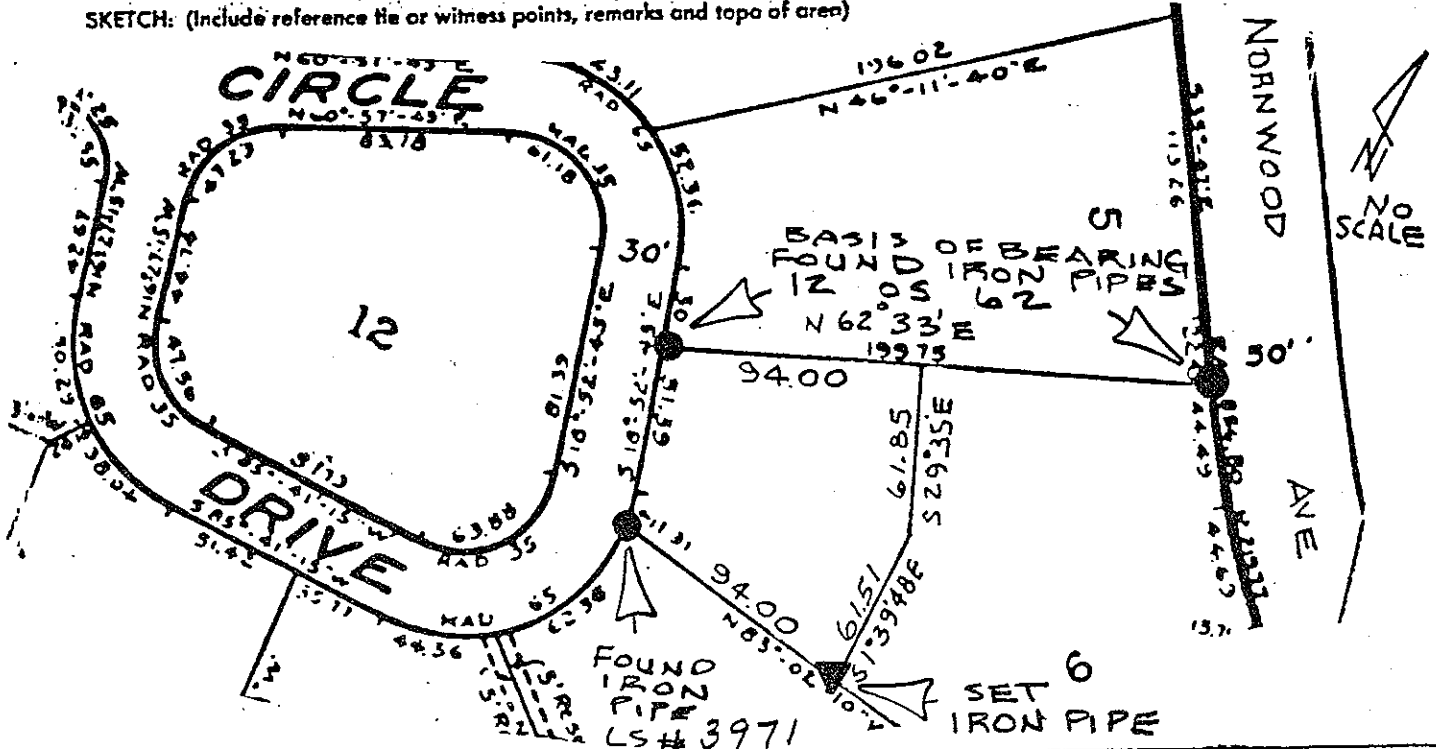
SET IRON PIPE & PLUG RCE# 15945

CALIFORNIA COORDINATE SYSTEM ORDER: FIRST SECOND THIRD

STATIONS USED: NGS (USC & GS) STATE COUNTY OTHER STATION _____ STATION _____

ZONE _____ ELEVATION _____ NORTHINGS (N) _____ EASTINGS (E) _____

SKETCH: (Include reference tie or witness points, remarks and topo of area)



SURVEYOR'S CERTIFICATE

THIS CORNER RECORD WAS PREPARED BY MR. ROBERT M. BELL UNDER THE DIRECTION IN CONFORMANCE WITH THE LAND SURVEYORS ACT ON JUNE 29

SIGNED: W. S. [Signature] 15945
 L.S. or R.C.E. No.: RCE 15945

ROBERT M. BELL
 PROFESSIONAL LAND SURVEYOR
 No. 15945
 Exp. 6/30/93
 CIVIL
 STATE OF CALIFORNIA

COUNTY SURVEYOR'S CERTIFICATE

THE CORNER RECORD WAS RECEIVED AND EXAMINED AND FILED BY: ROBERT M. BELL COUNTY SURVEYOR

BY: _____ TITLE: _____

DOCUMENT No. _____

STATEMENT ON BACK OF SHEET _____

NO