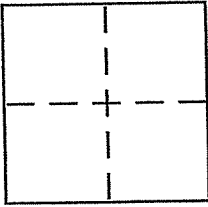


CORNER RECORD

Document Number 72-191-08
County of MARIN, California

City of VICINITY OF KENTFIELD

Brief Legal Description 23 PM 53



CORNER TYPE

- Government Corner Control
- Meander Property
- Rancho Other
- Date of Survey _____

COORDINATES (Optional)

- N. _____
- E. _____
- Zone _____ NAD27 NAD83
- NAD83 Epoch _____
- Elev. _____
- Vert. Datum: NGVD29 NAVD88
- Meas. Units: Metric Imperial

Corner - Left as found Found and tagged Established Reestablished Rebuilt

Identification and type of corner found: Evidence used to identify or procedure used to establish or reestablish the corner:

ESTABLISH A RANDOM POINT ON THE SOUTHERLY LINE OF LOT 1 (23 PM 53); SOUTHERLY LINE BEING THAT COURSE S 74° 22' 47" W, 441.15'. SAID RANDOM POINT SET FROM FOUND POINTS OF 23 PM 53 AS DEPICTED UPON THE SKETCH UPON THE REVERSE SIDE

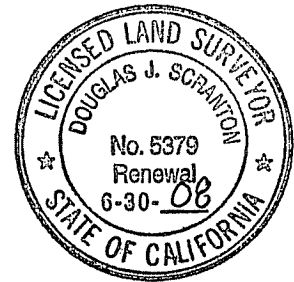
A description of the physical condition of the monument as found and as set or reset: SET 1/2" PEGBAR

WITH PLS CAP 5379 AFFIXED TO TOP & DRIVEN FLUSH WITH SURROUNDING GRADE.

SURVEYOR'S STATEMENT

This Corner Record was prepared by me or under my direction in conformance with the Land Surveyor's Act on DECEMBER 26 2006

Signed Douglas J. Scranton P.L.S or R.C.E. No. PLS 5379



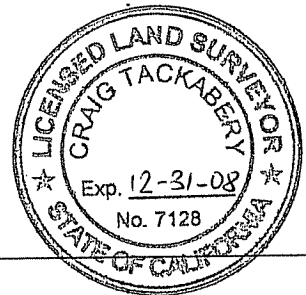
COUNTY SURVEYOR'S STATEMENT

This Corner Record was received JANUARY 4, 2007

and examined and filed February 7, 2007

Signed _____ P.L.S or R.C.E. No. 7128

Title County Surveyor



County Surveyor's Comment _____

Prepared by DJ SCRANTON SURVEYING NOVATO, CA

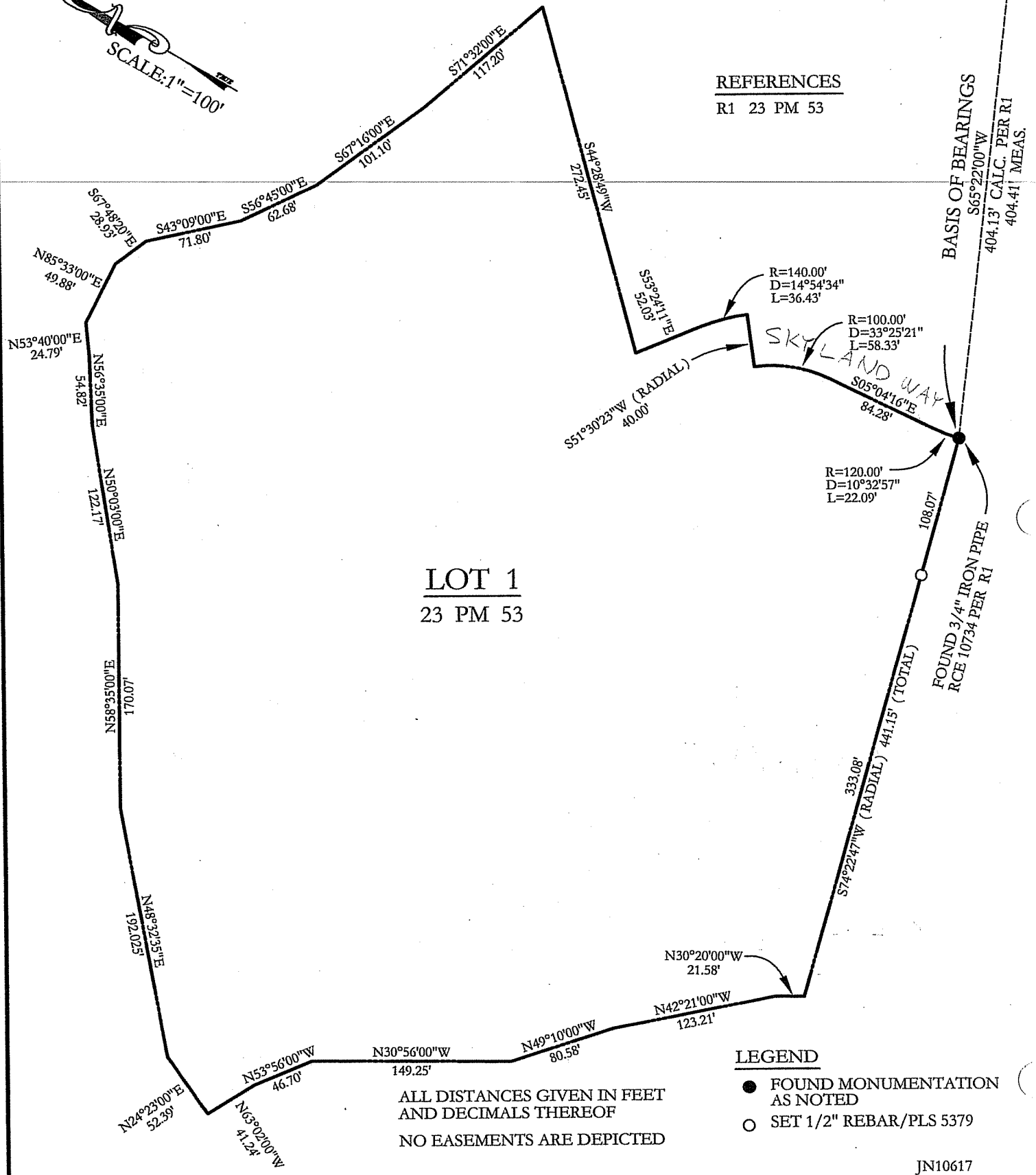
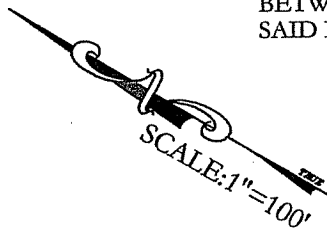
BASIS OF BEARINGS

TAKEN AS SOUTH 65°22'00" WEST BETWEEN
BETWEEN FOUND PIPES AS SHOWN AND AS
SAID PIPES ARE DEPICTED UPON 23 PM 53

FOUND 1" IRON PIPE LS 2731
AT THE NORTHEAST CORNER
LOT 3 PER R1

REFERENCES

R1 23 PM 53



LOT 1
23 PM 53

ALL DISTANCES GIVEN IN FEET
AND DECIMALS THEREOF
NO EASEMENTS ARE DEPICTED

LEGEND

- FOUND MONUMENTATION AS NOTED
- SET 1/2" REBAR/PLS 5379