

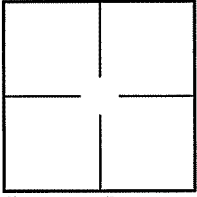
CORNER RECORD

Document Number A.P.# 072-091-13

City of ROSS

County of MARIN, California

Brief Legal Description 2003 O.S. 255, LAND OF BUIE, D.N. 01-026986



CORNER TYPE COORDINATES (Optional)

Government Corner Control

Meander Property

Rancho Other

Date of Survey 06/15/09

N. _____
 E. _____
 Zone _____ NAD27 NAD83
 NAD83 Epoch _____
 Elev. _____
 Vert. Datum: NGVD29 NAVD88
 Meas. Units: Metric Imperial

Corner- Left as found Found and tagged Established Reestablished Rebuilt

Identification and type of corner found: Evidence used to identify or procedure used to establish or reestablish the corner:

ESTABLISHED PORTION OF SOUTHWESTERLY LINE OF LANDS OF BUIE
ACCORDING TO FOUND POINTS PER 2003 O.S. 255 AND AS SHOWN ON SHEET 2.

A description of the physical condition of the monument as found and as set or reset: SEE SHEET 2.

SURVEYOR'S STATEMENT

This Corner Record was prepared by me or under my direction in conformance with

the Land Surveyor's Act on JUNE 15 2009

Signed Lawrence P Doyle P.L.S. or R.C.E. No. P.L.S. 4694



COUNTY SURVEYOR'S STATEMENT

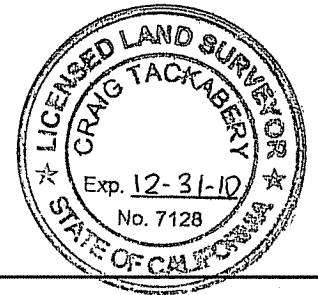
This Corner Record was received JULY 17, 2009

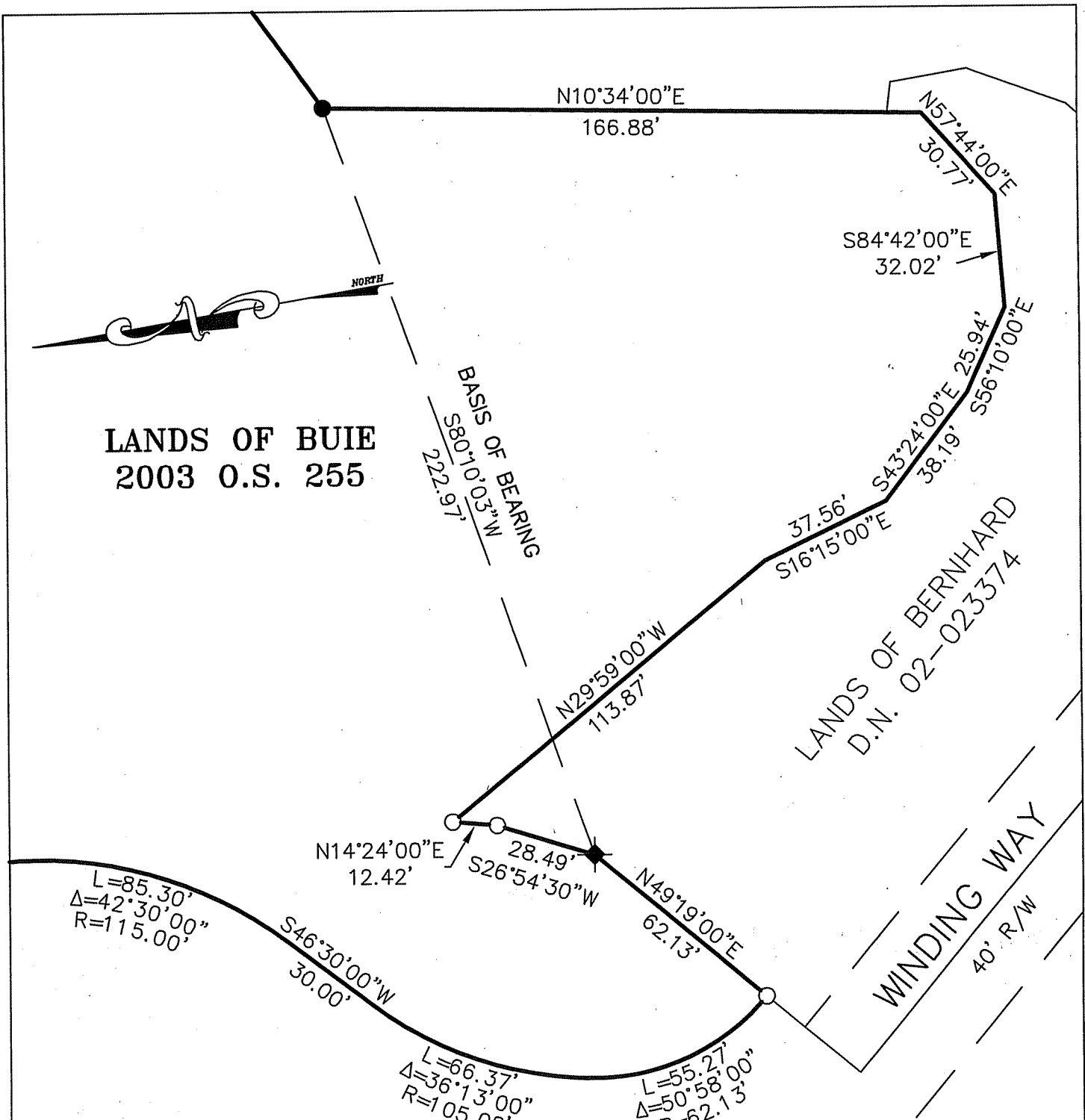
and examined and filed SEPTEMBER 16, 2009

Signed [Signature] P.L.S. or R.C.E. No. 7128

Title COUNTY SURVEYOR

County Surveyor's Comment _____





LANDS OF BUIE
2003 O.S. 255

LANDS OF BERNHARD
D.N. 02-023374

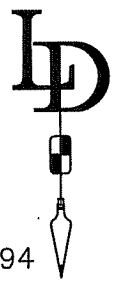
WINDING WAY
40' R/W

BASIS OF BEARING

THE BASIS OF BEARING FOR THIS SURVEY IS
S80°10'03"W BETWEEN A FOUND CONCRETE MONUMENT
AND FOUND PIPE & PLUG, L.S. 4694,
PER 2003 O.S. 255.

LEGEND

- FOUND PIPE & PLUG, L.S. 4694
- FOUND CONCRETE MONUMENT
- SET 3/4" PIPE & PLUG, L.S. 4694



CORNER RECORD 2003 O.S. 255		
ROSS	MARIN COUNTY	CALIFORNIA
SCALE: 1" = 40'	LAWRENCE P. DOYLE	DRAWN BY:
DATE: 6/2009		SHEET 2 OF 2
LAND SURVEYOR/CIVIL ENGINEER 100 HELENS LANE MILL VALLEY CA 94941 (415-388-9585)		
		DRAWING NO. 1586-09