



JERRICO ASSOCIATES
 SUITE 27
 77 MARK DRIVE
 SAN RAFAEL, CA 94903

A.P. # 72-071-04

6633

CORNER RECORD

1/5

COUNTY OF Marin T. _____ R. _____ MERIDIAN _____ CALIFORNIA
 CORNER TYPE: GOVT. CORNER MEANDER RANCHO CONTROL OTHER
 CORNER IDENTIFICATION — DATE OF VISIT _____ 19____



CORNER — LEFT AS FOUND FOUND AND TAGGED REESTABLISHED OBLITERATED CORNER REBUILT

PHYSICAL DESCRIPTION OF CORNER FOUND; EVIDENCE AND METHOD USED TO IDENTIFY OR REESTABLISH

Found points as indicated: (A) Conc. 4"x4" mon.w/pin. (B) Conc. nail.
 (C) Old pipe (found and tagged by Lockton) now missing tag.

Lot 6, Block 9, Map of Winship Park (4 R.M. 33)

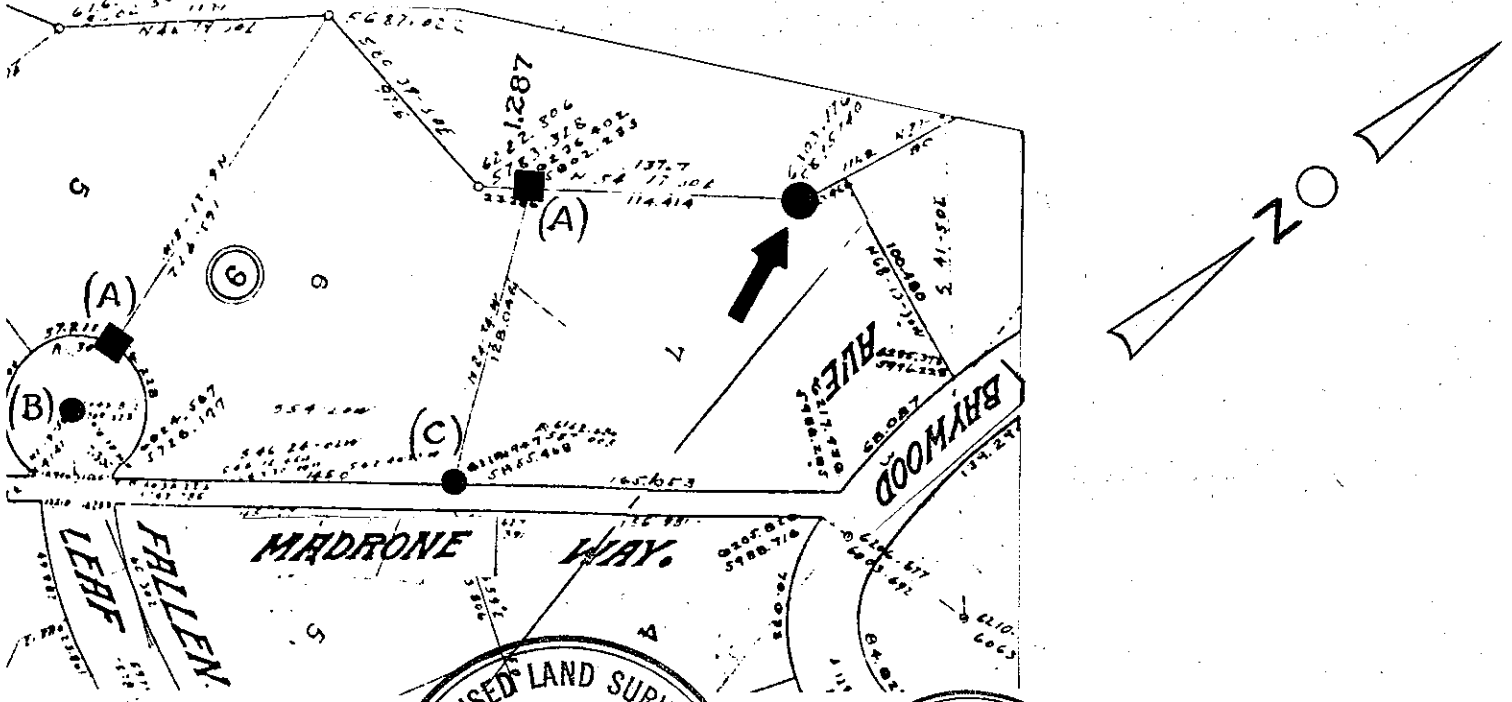
PHYSICAL DESCRIPTION OF MONUMENTS, REBUILT OR PERPETUATED

- (B) Found conc. nail in centerline of cul-de-sac.
- (C) Found old pipe re-tagged w/ L.S. 3887
- (A) Found conc. block w/ pin.

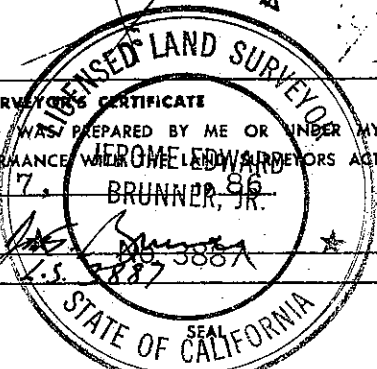
➔ SET Hub and L.S. 3887

CALIFORNIA COORDINATE SYSTEM ORDER: FIRST SECOND THIRD
 STATIONS USED: NGS (USC & GS) STATE COUNTY OTHER STATION _____ STATION _____
 ZONE _____ ELEVATION _____ NORTHINGS (Y) _____ EASTINGS (X) _____

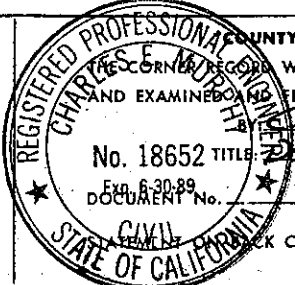
SKETCH: (Include reference tie or witness points, remarks and topo of area)



SURVEYOR'S CERTIFICATE
 THIS CORNER RECORD WAS PREPARED BY ME OR UNDER MY DIRECTION IN CONFORMANCE WITH THE LAND SURVEYORS ACT ON August 7, 1986
 SIGNED: JEROME EDWARD BRUNNER, JR.
 L.S. or R.C.E. No.: 15-3887



COUNTY SURVEYOR'S CERTIFICATE
 THIS CORNER RECORD WAS RECEIVED 8-22 1986
 AND EXAMINED AND FILED 8-27-86 1986
 No. 18652 TITLE Deputy County Surveyor
 DOCUMENT No. _____
 CIVIL ENGINEER
 STATE OF CALIFORNIA



YES NO



JERRICO ASSOCIATES
 SUITE 27
 77 MARK DRIVE
 SAN RAFAEL, CA 94903

72-071-04

6633

CORNER RECORD

2/5

COUNTY OF Marin T. _____ R. _____ MERIDIAN _____ CALIFORNIA
 CORNER TYPE: GOVT. CORNER MEANDER RANCHO CONTROL OTHER
 CORNER IDENTIFICATION — DATE OF VISIT _____ 19__



CORNER — LEFT AS FOUND FOUND AND TAGGED REESTABLISHED OBLITERATED CORNER REBUILT

PHYSICAL DESCRIPTION OF CORNER FOUND; EVIDENCE AND METHOD USED TO IDENTIFY OR REESTABLISH

Found points as indicated: (A) Conc. 4"x4" mon. w/pin. (B) Conc. nail.
 (C) Old pipe (found and tagged by Lockton) now missing tag.

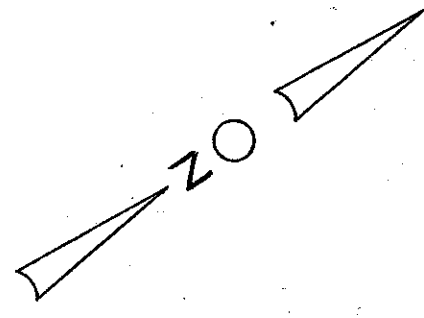
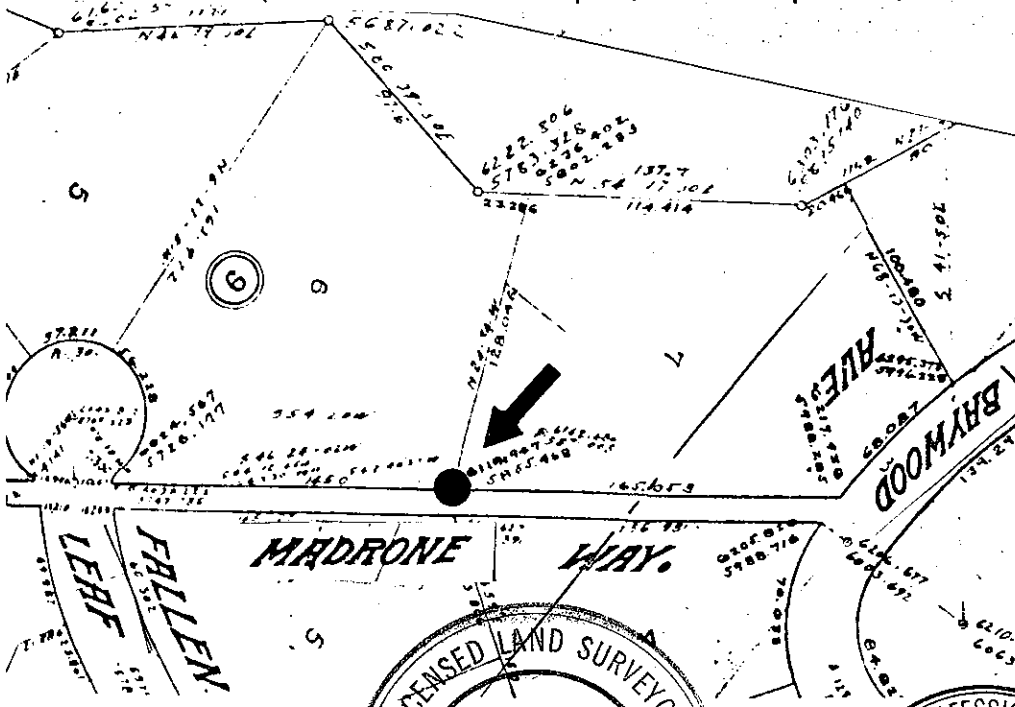
SEE SHEET 1 of 5

PHYSICAL DESCRIPTION OF MONUMENTS REBUILT OR PERPETUATED

Set tag L.S. 3887 in found old pipe.

CALIFORNIA COORDINATE SYSTEM ORDER: FIRST SECOND THIRD
 STATIONS USED: NGS (USC & GS) STATE COUNTY OTHER STATION _____ STATION _____
 ZONE _____ ELEVATION _____ NORTHINGS (Y) _____ EASTINGS (X) _____

SKETCH: (Include reference tie or witness points, remarks and topo of area)



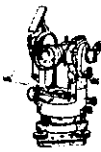
SURVEYOR'S CERTIFICATE
 THIS CORNER RECORD WAS PREPARED BY ME OR UNDER MY DIRECTION IN CONFORMANCE WITH THE LAND SURVEYORS ACT ON August 7 19 86

SIGNED: _____
 L.S. or R.C.E. No.: _____



COUNTY SURVEYOR'S CERTIFICATE
 THIS CORNER RECORD WAS RECEIVED 8-22 19 86
 AND EXAMINED AND APPROVED 8-27 19 86
 BY: Charles E. Miller
 TITLE: Deputy County Surveyor
 No. 18652
 Exp. 6-30-89
 DOCUMENT No. _____
 CIVIL
 STATE OF CALIFORNIA

YES NO



JERRICO ASSOCIATES
 SUITE 27
 77 MARK DRIVE
 SAN RAFAEL, CA 94903

72-071-04

6633

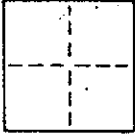
CORNER RECORD

3/5

COUNTY OF Marin T. _____ R. _____ MERIDIAN _____ CALIFORNIA

CORNER TYPE: GOVT. CORNER MEANDER RANCHO CONTROL OTHER

CORNER IDENTIFICATION — DATE OF VISIT _____ 19____



CORNER — LEFT AS FOUND FOUND AND TAGGED REESTABLISHED OBLITERATED CORNER REBUILT

PHYSICAL DESCRIPTION OF CORNER FOUND; EVIDENCE AND METHOD USED TO IDENTIFY OR REESTABLISH

Found points as indicated: (A) Conc. 4"x4" mon. w/pin. (B) Conc. nail.
 (C) Old pipe (found and tagged by Lockton) now missing tag.

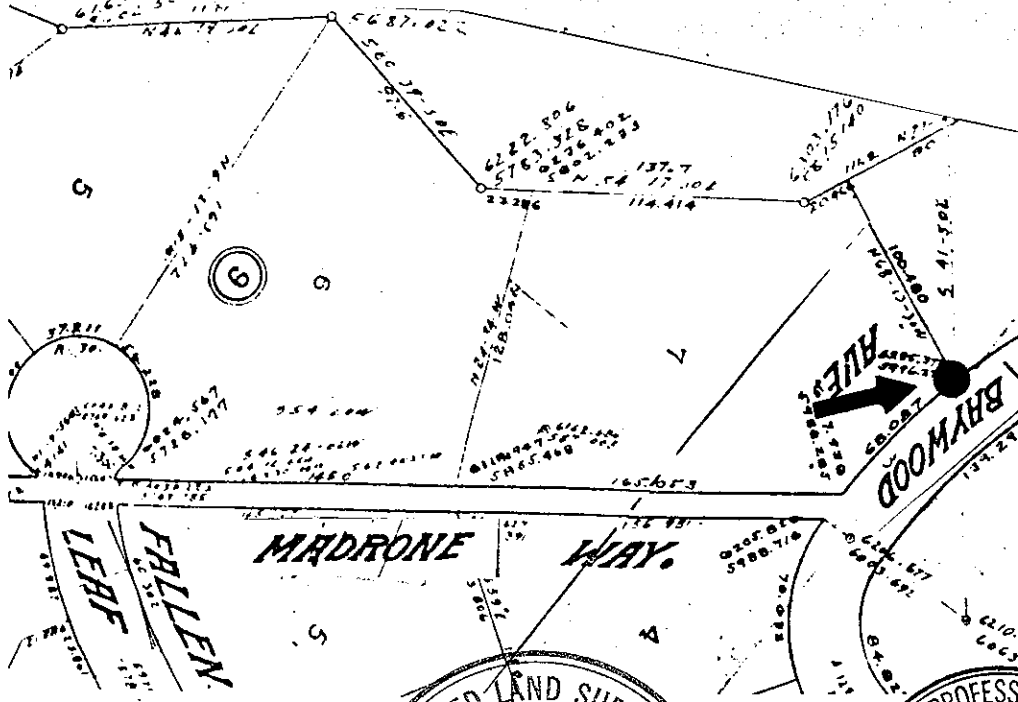
SEE SHEET 1 of 5

PHYSICAL DESCRIPTION OF MONUMENTS REBUILT OR PERPETUATED

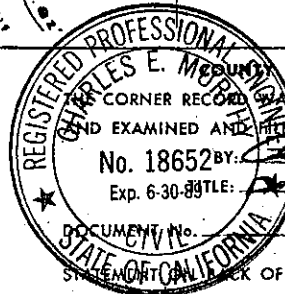
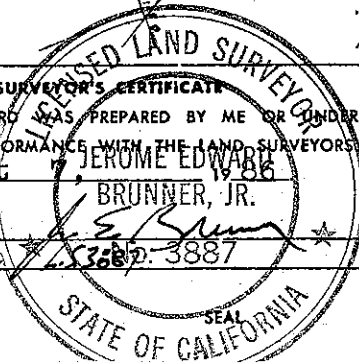
Set hub and L.S. 3887

CALIFORNIA COORDINATE SYSTEM ORDER: FIRST SECOND THIRD
 STATIONS USED: NGS (USC & GS) STATE COUNTY OTHER STATION _____ STATION _____
 ZONE _____ ELEVATION _____ NORTHINGS (Y) _____ EASTINGS (X) _____

SKETCH: (Include reference tie or witness points, remarks and topo of area)



SURVEYOR'S CERTIFICATE
 THIS CORNER RECORD WAS PREPARED BY ME OR UNDER MY DIRECTION IN CONFORMANCE WITH THE LAND SURVEYORS ACT ON August 19 1986 BY JEROME EDWARD BRUNNER, JR.
 SIGNED: [Signature]
 L.S. or R.C.E. No.: 3887



SURVEYOR'S CERTIFICATE
 THIS CORNER RECORD WAS RECEIVED 8-22-1986 AND EXAMINED AND FILED 8-27-1986 BY Charles E. Murphy Deputy County Surveyor
 No. 18652 BY: [Signature]
 Exp. 6-30-89 TLE: [Signature]

DOCUMENT No. _____
 STATE OF CALIFORNIA
 SHEET _____ OF SHEET

YES NO



JERRICO ASSOCIATES
 SUITE 27
 77 MARK DRIVE
 SAN RAFAEL, CA 94903

72-071-04

6633

CORNER RECORD

4/5

COUNTY OF Marin T. _____ R. _____ MERIDIAN _____ CALIFORNIA
 CORNER TYPE: GOVT. CORNER MEANDER RANCHO CONTROL OTHER
 CORNER IDENTIFICATION — DATE OF VISIT _____ 19____



CORNER — LEFT AS FOUND FOUND AND TAGGED REESTABLISHED OBLITERATED CORNER REBUILT

PHYSICAL DESCRIPTION OF CORNER FOUND; EVIDENCE AND METHOD USED TO IDENTIFY OR REESTABLISH

Found points as indicated: (A) Conc. 4"x4" mon. w/pin. (B) Conc. nail.
 (C) Old pipe (found and tagged by Lockton) now missing tag.

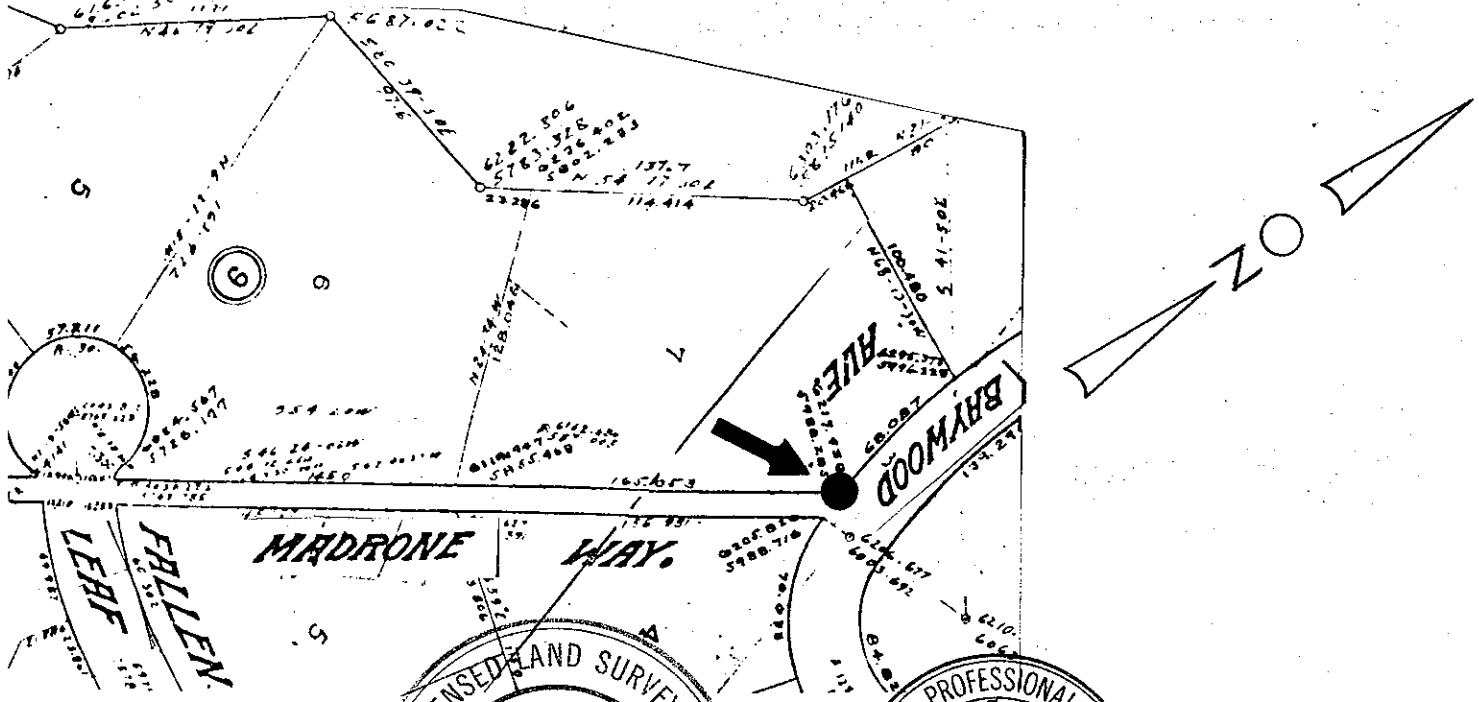
SEE SHEET 1 of 5

PHYSICAL DESCRIPTION OF MONUMENTS REBUILT OR PERPETUATED

Set hub and L.S. 3887

CALIFORNIA COORDINATE SYSTEM ORDER: FIRST SECOND THIRD
 STATIONS USED: NGS (USC & GS) STATE COUNTY OTHER STATION _____ STATION _____
 ZONE _____ ELEVATION _____ NORTHINGS (Y) _____ EASTINGS (X) _____

SKETCH: (Include reference tie or witness points, remarks and topo of area)



SURVEYOR'S CERTIFICATE
 THIS CORNER RECORD WAS PREPARED BY ME OR UNDER MY DIRECTION IN CONFORMANCE WITH THE LAND SURVEYORS ACT ON August 7, 1986
 SIGNED: E. Brunner
 L.S. or R.C.E. No.: L.S. 3887
 STATE OF CALIFORNIA

REGISTERED PROFESSIONAL ENGINEER
 RECEIVED 8-22-1986
 AND EXAMINED AND FILED 8-27-1986
 No. 18652 BY: Charles E. Mumley
 Exp. 6-30-89 TITLE: Deputy County Surveyor
 STATE OF CALIFORNIA
 DOCUMENT No. _____
 STA. _____ BACK OF SHEET

YES NO



JERRICO ASSOCIATES
 SUITE 27
 77 MARK DRIVE
 SAN RAFAEL, CA 94903

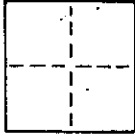
72-071-04

6633

CORNER RECORD

5/5

COUNTY OF Marin T. _____ R. _____ MERIDIAN _____ CALIFORNIA
 CORNER TYPE: GOVT. CORNER MEANDER RANCHO CONTROL OTHER
 CORNER IDENTIFICATION — DATE OF VISIT _____ 19____



CORNER — LEFT AS FOUND FOUND AND TAGGED REESTABLISHED OBLITERATED CORNER REBUILT

PHYSICAL DESCRIPTION OF CORNER FOUND; EVIDENCE AND METHOD USED TO IDENTIFY OR REESTABLISH

Found points as indicated: (A) Conc. 4"x4" mon. w/pin. (B) Conc. nail.
 (C) Old pipe (found and tagged by Lockton) now missing tag.

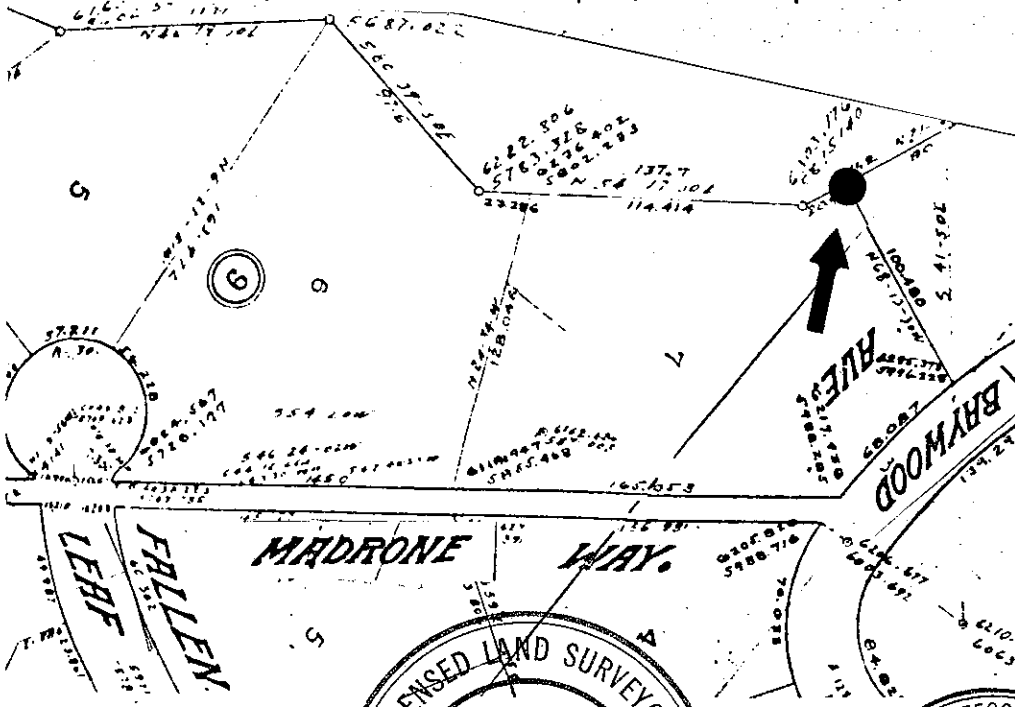
SEE SHEET 1 of 5

PHYSICAL DESCRIPTION OF MONUMENTS REBUILT OR PERPETUATED

Set hub and L.S. 3887

CALIFORNIA COORDINATE SYSTEM ORDER: FIRST SECOND THIRD
 STATIONS USED: NGS (USC & GS) STATE COUNTY OTHER STATION _____ STATION _____
 ZONE _____ ELEVATION _____ NORTHINGS (Y) _____ EASTINGS (X) _____

SKETCH: (Include reference tie or witness points, remarks and topo of area)



THIS CORNER RECORD WAS PREPARED BY JEROME EDWARD BRUNNER, JR. UNDER MY DIRECTION IN CONFORMANCE WITH THE LAND SURVEYORS ACT ON August 7 1986

SIGNED: [Signature]
 L.S. or R.C.E. No.: 3887



COUNTY SURVEYOR'S CERTIFICATE
 THIS CORNER RECORD WAS RECEIVED 8-22 1986
 AND EXAMINED AND 8-27 1986
 BY: [Signature]
 TITLE: Deputy County Surveyor
 No. 18652
 Exp. 6-30-89
 DOCUMENT No. _____
 CIVIL
 STATE OF CALIFORNIA

OF SHEET YES NO