

CORNER RECORD

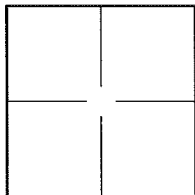
Document Number 072-071-030

Town of ROSS County of MARIN, California

Brief Legal Description LOTS 1 & 2 OF VOLUME 4 OF MAPS, PAGES 32A & 33 A.P. NO. 072-071-30

CORNER TYPE

COORDINATES (Optional)



Government Corner Control
Meander Property
Rancho Other
Date of Survey 04 APRIL 2016

N. _____
E. _____
Zone _____ NAD27 NAD83
NAD83 Epoch _____
Elev. _____
Vert. Datum: NGVD29 NAVD88
Meas. Units: Metric Imperial

Corner - Left as found Found and tagged Established Reestablished Rebuilt

Identification and type of corner found: Evidence used to identify or procedure used to establish or reestablish the corner:
ESTABLISHED LOT 1 AND 2, BLOCK 9, OF 4 MAPS 32A&33 BY FOUND 1/2" REBARS TAGGED LS 5065 PER
RECORD OF SURVEY 2010 MAPS 54. SEE PAGE 2.

A description of the physical condition of the monument as found and as set or reset: SEE PAGE 2

SURVEYOR'S STATEMENT

This Corner Record was prepared by me or under my direction in conformance with
the Land Surveyor's Act on MAY 4 20 16
Signed [Signature] P.L.S. or R.C.E. No. LS 7539

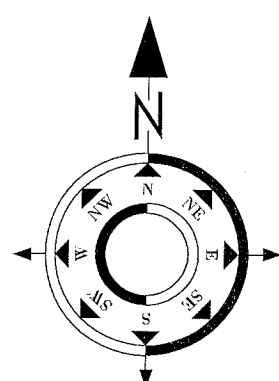
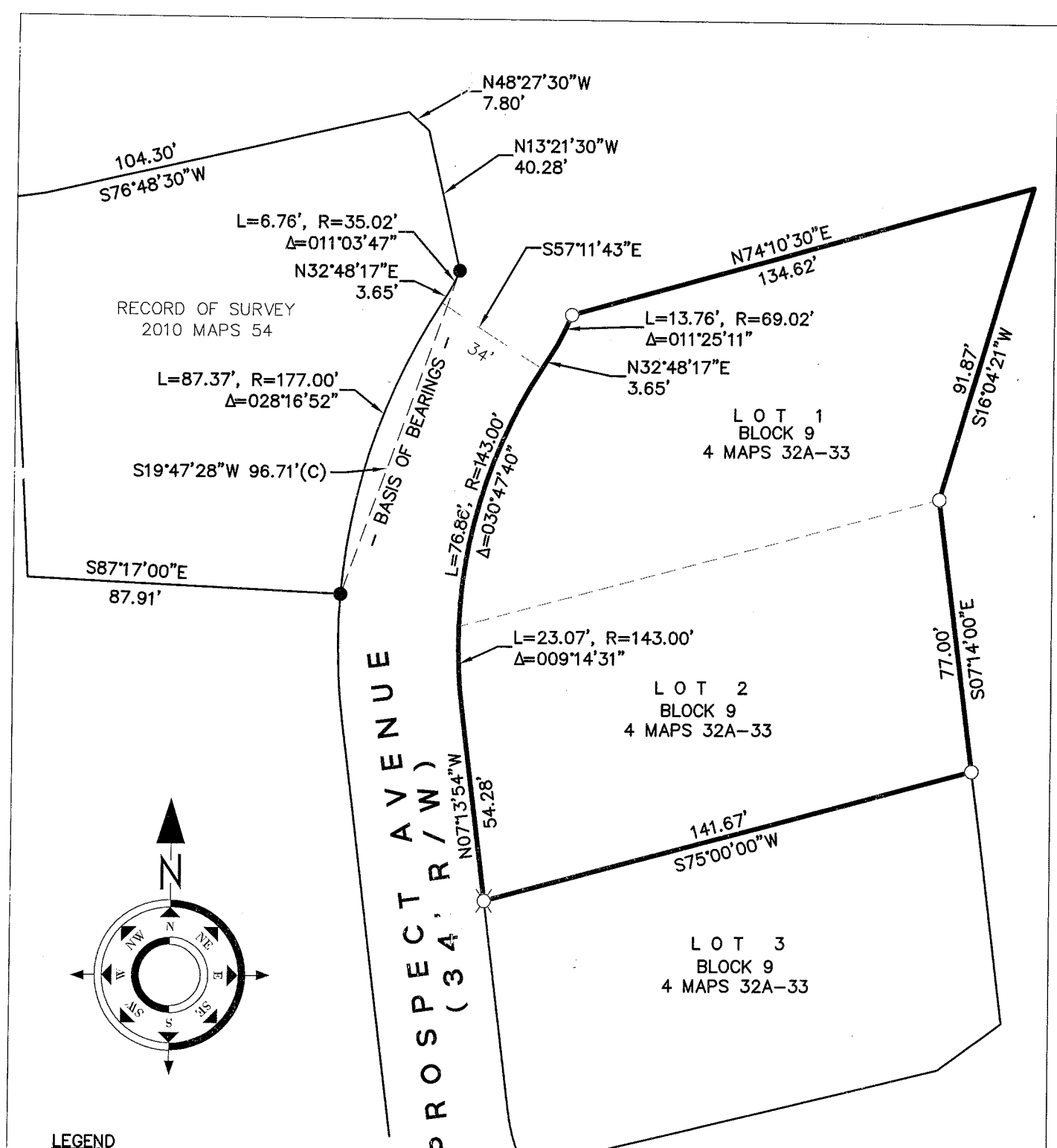


COUNTY SURVEYOR'S STATEMENT

This Corner Record was received MAY 10, 2016
and examined and filed AUGUST 26, 2016
Signed [Signature] P.L.S. or R.C.E. No. 7821
Title County Surveyor



County Surveyor's Comment: _____



LEGEND

- FOUND 1/2" REBAR & CAP, LS 5065
- SET 3/4" IRON PIPE TAGGED "LS7539"
- ⊗ SET NAIL & BRASS TAG IN SIDEWALK TAGGED "LS7539"

NOTES

- (C) CALCULATED
- (1) 4 MAPS 32A-33
- (2) 2010 MAPS 54

JOB NO. 4714-01