

CORNER RECORD

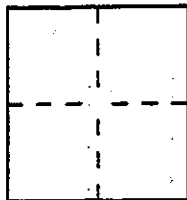
A.P.N. 072-061-13 & 17

Document Number 94-019251

City of ROSS

County of MARIN, California

Brief Legal Description A.P.N. 072-061-13 & 17 - A portion of that Land as shown on 13 PM 97



CORNER TYPE

Government Corner Control
 Meander Property
 Rancho Other
 Date of Survey 8/2/94

COORDINATES (Optional)

N. _____
 E. _____
 Zone _____ Datum _____
 Elev. _____

Corner — Left as found Found and tagged Established Reestablished Rebuilt

Identification and type of corner found: Evidence used to identify or procedure used to establish or reestablish the corner:

A description of the physical condition of the monument as found and as set or reset: SET 3/4" Iron Pipes at five corners of the southwesterly portion of subject parcel, as said parcel being the same as shown on 13 PM 97. Set pipes marked with tag "RCE 18221" (See Diagram on back of this sheet).

SURVEYOR'S STATEMENT

This Corner Record was prepared by me or under my direction in conformance with the Land Surveyors' Act on NOVEMBER 16 1994.

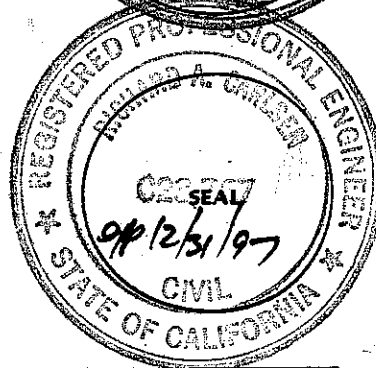
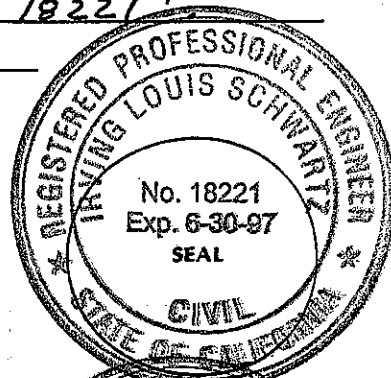
Signed [Signature] L.S. or R.C.E. Number RCE 18221

COUNTY SURVEYOR'S STATEMENT

This Corner Record was received NOVEMBER 18 1994 and examined and filed 21 November 1994.

Signed Richard A. Carlson Title Deputy

County Surveyor's Comment _____

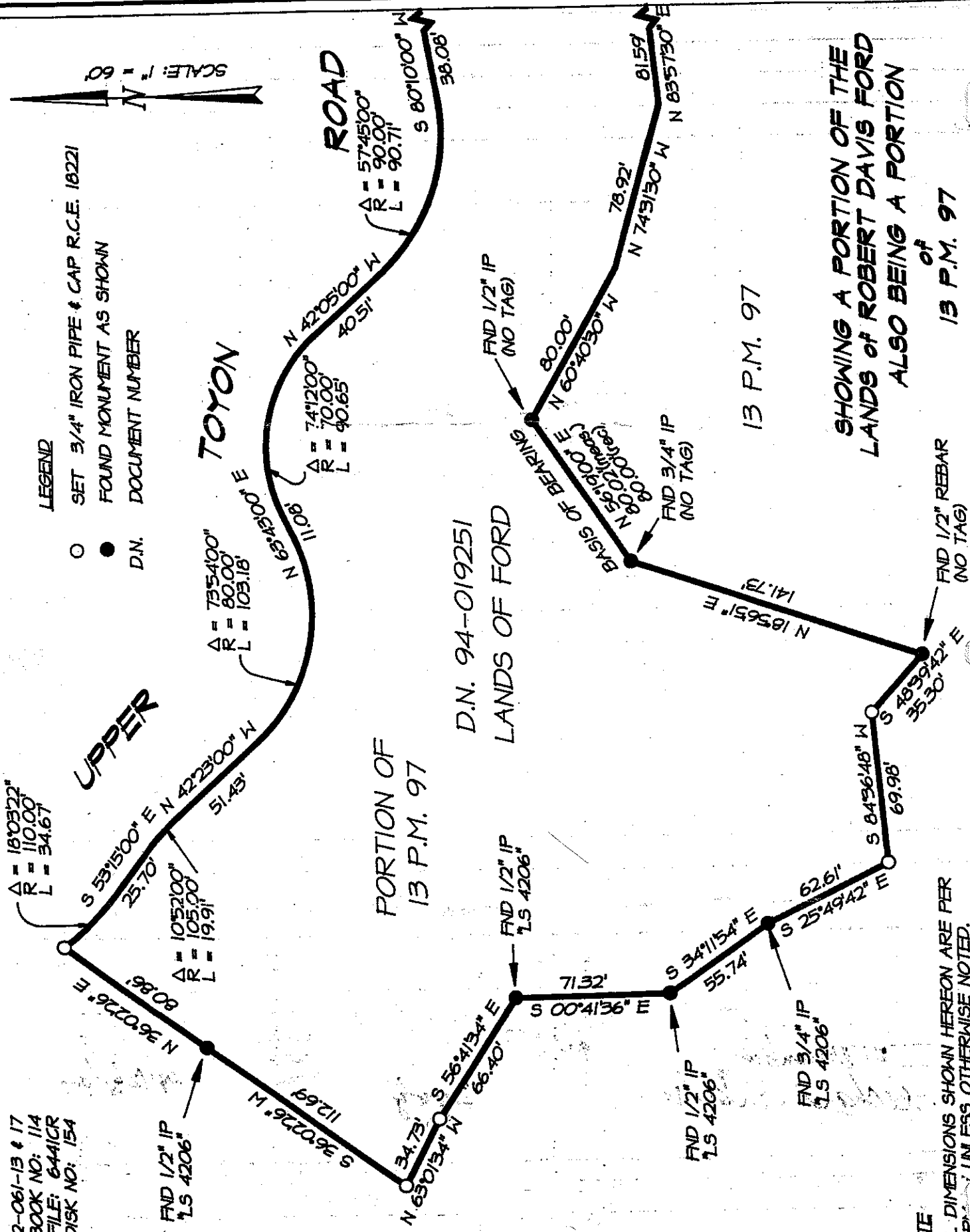


A.P.N. 72-061-13 & 17
 FIELD BOOK NO: 114
 DWG. FILE: 6441CR
 DWG. DISK NO: 154

LEGEND

- SET 3/4" IRON PIPE & CAP R.C.E. 18221
- FOUND MONUMENT AS SHOWN
- D.N. DOCUMENT NUMBER

SCALE: 1" = 60'



PORTION OF
 13 P.M. 97

D.N. 94-019251
 LANDS OF FORD

13 P.M. 97

SHOWING A PORTION OF THE
 LANDS OF ROBERT DAVIS FORD
 ALSO BEING A PORTION
 of
 13 P.M. 97

NOTE
 ALL DIMENSIONS SHOWN HEREON ARE PER
 13 P.M. 97 UNLESS OTHERWISE NOTED.