

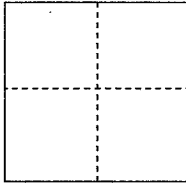
CORNER RECORD

Documented Number 072-023-23

City of Ross

County of Marin, California

Brief Legal Description Parcel 2 of Book 10 of Official Surveys at Page 47



CORNER TYPE

Government Corner Control

Meander Property

Rancho Other

COORDINATES(Optional)

N. _____

E. _____

Zone _____ NAD27 NAD83

NAD83 Epoch _____

Elevation _____

Vert. Datum: NGVD 29 NADV88

Meas. Units: Metric Imperial

Date of Survey April 30, 2013

Corner- Left as found Found and tagged Established Reestablished Rebuilt

Identification and type of corner found: Evidence used to identify or procedure used to establish or reestablish the corner:

Reestablish a portion only of Parcel 2 of Book 10 of Official Surveys at Page 47 from found monumentation depicted upon said referred survey. See sketch on reverse side for details of the lines retraced per this survey and for points set. This retracement held the position of all found points excepting for the disturbed pipe labeled Point A on the sketch on the reverse side. The variations between found measurements compared to the record measurements as shown upon 10 OS 47 are minor in nature.

A description of the physical condition of the monument as found and as set or reset:

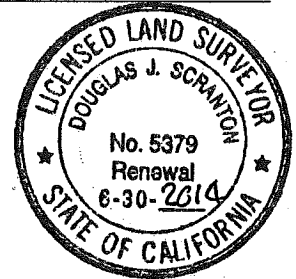
Set one half inch rebar with yellow plastic cap attached to top of rebar driven flush to surrounding grade with the cap stamped "Scranton, PLS 5379". Also set a brass nail with brass tag stamped LS 5379 in the Westerly face of a large redwood tree. Refer to the sketch on reverse side for specific locations of points set which were set at random intervals along the lot line.

SURVEYOR'S STATEMENT

This Corner Record was prepared by me or under my direction in conformance with

the Land Surveyor's Act on May 6, 2013

Signed Douglas J. Scranton P.L.S. or R.C.E. No.: PLS 5379



COUNTY SURVEYOR'S STATEMENT

This Corner Record was received MAY 7, 2013 and examined

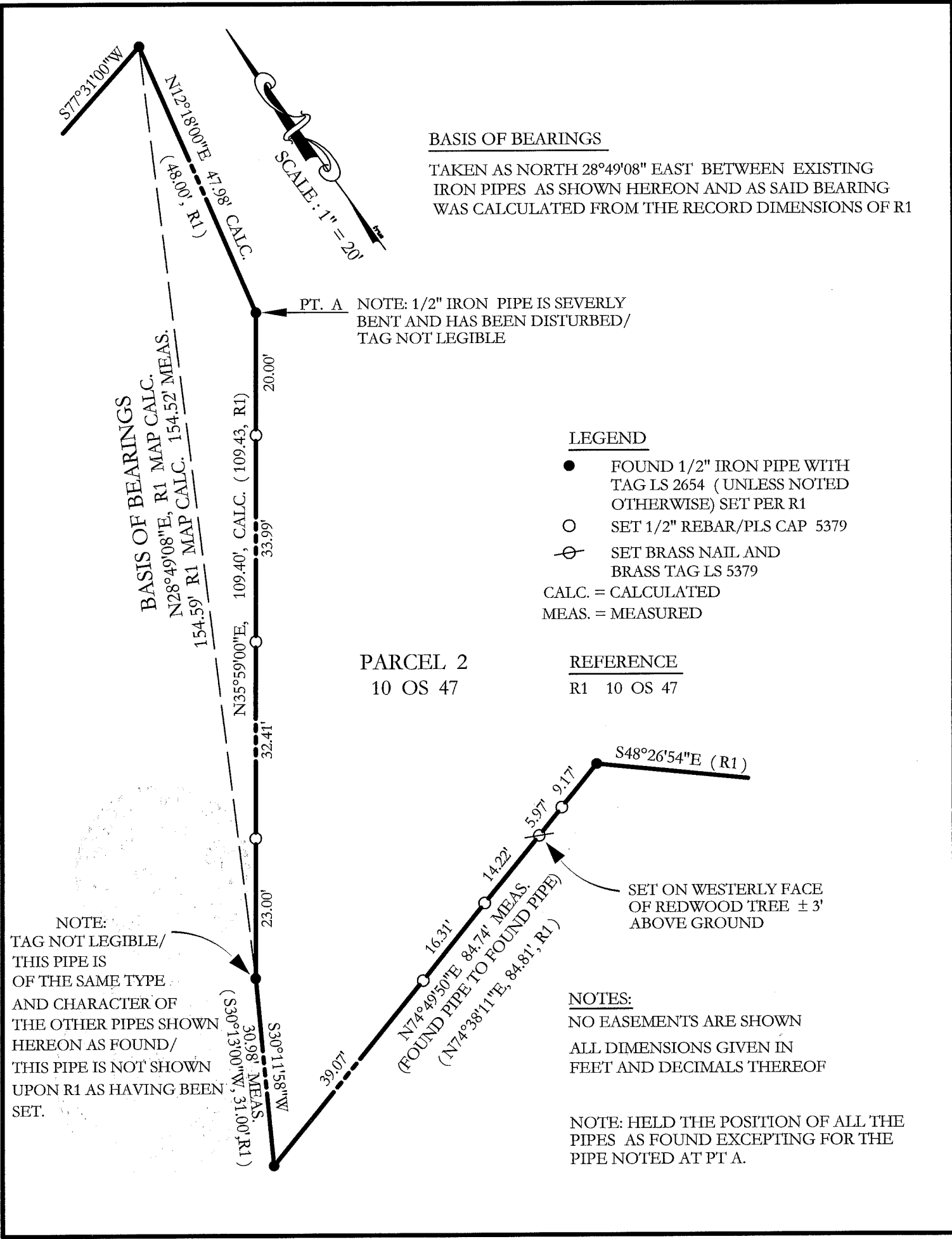
and filed JUNE 14 2013

Signed Richard G. Simonitch P.L.S. or R.C.E. No.: 7821



Title DEPUTY CO. SURVEYOR

County Surveyor's Comment _____



BASIS OF BEARINGS

TAKEN AS NORTH 28°49'08" EAST BETWEEN EXISTING IRON PIPES AS SHOWN HEREON AND AS SAID BEARING WAS CALCULATED FROM THE RECORD DIMENSIONS OF R1



PT. A NOTE: 1/2" IRON PIPE IS SEVERLY BENT AND HAS BEEN DISTURBED/ TAG NOT LEGIBLE

LEGEND

- FOUND 1/2" IRON PIPE WITH TAG LS 2654 (UNLESS NOTED OTHERWISE) SET PER R1
 - SET 1/2" REBAR/PLS CAP 5379
 - ⊕ SET BRASS NAIL AND BRASS TAG LS 5379
- CALC. = CALCULATED
MEAS. = MEASURED

PARCEL 2
10 OS 47

REFERENCE
R1 10 OS 47

NOTE:
TAG NOT LEGIBLE/
THIS PIPE IS
OF THE SAME TYPE
AND CHARACTER OF
THE OTHER PIPES SHOWN
HEREON AS FOUND/
THIS PIPE IS NOT SHOWN
UPON R1 AS HAVING BEEN
SET.

SET ON WESTERLY FACE
OF REDWOOD TREE ± 3'
ABOVE GROUND

NOTES:
NO EASEMENTS ARE SHOWN
ALL DIMENSIONS GIVEN IN
FEET AND DECIMALS THEREOF

NOTE: HELD THE POSITION OF ALL THE
PIPES AS FOUND EXCEPTING FOR THE
PIPE NOTED AT PT. A.