

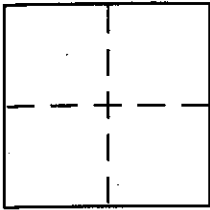
CORNER RECORD

Document Number 071-213-22

City of KENTFIELD

County of Marin, California

Brief Legal Description Being Portions Of Lots 12, 14 & 15 (12 RM 79), Per 12 AS 13.



CORNER TYPE

Government Corner Control
Meander Property
Rancho Other
Date of Survey 6/99

COORDINATES (Optional)

N. _____
E. _____
Zone _____ NAD27 NAD83
NAD83 Epoch _____
Elev. _____
Vert. Datum: NGVD29 NAVD88
Meas. Units: Metric Imperial

Corner - Left as found Found and tagged Established Reestablished Rebuilt

Identification and type of corner found: Evidence used to identify or procedure used to establish or reestablish the corner:

See Page 2 of 2, Plat Of Corner Record

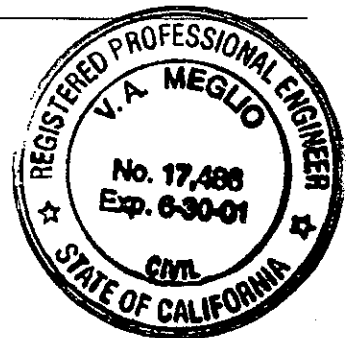
A description of the physical condition of the monument as found and as set or reset:

See Page 2 of 2, Plat Of Corner Record

SURVEYOR'S STATEMENT

This Corner Record was prepared by me or under my direction in conformance with the Land Surveyor's Act on July 18, 1999

Signed V.A. Meglio P.L.S or R.C.E. No. RCE 17486



COUNTY SURVEYOR'S STATEMENT

This Corner Record was received JULY 21, 1999

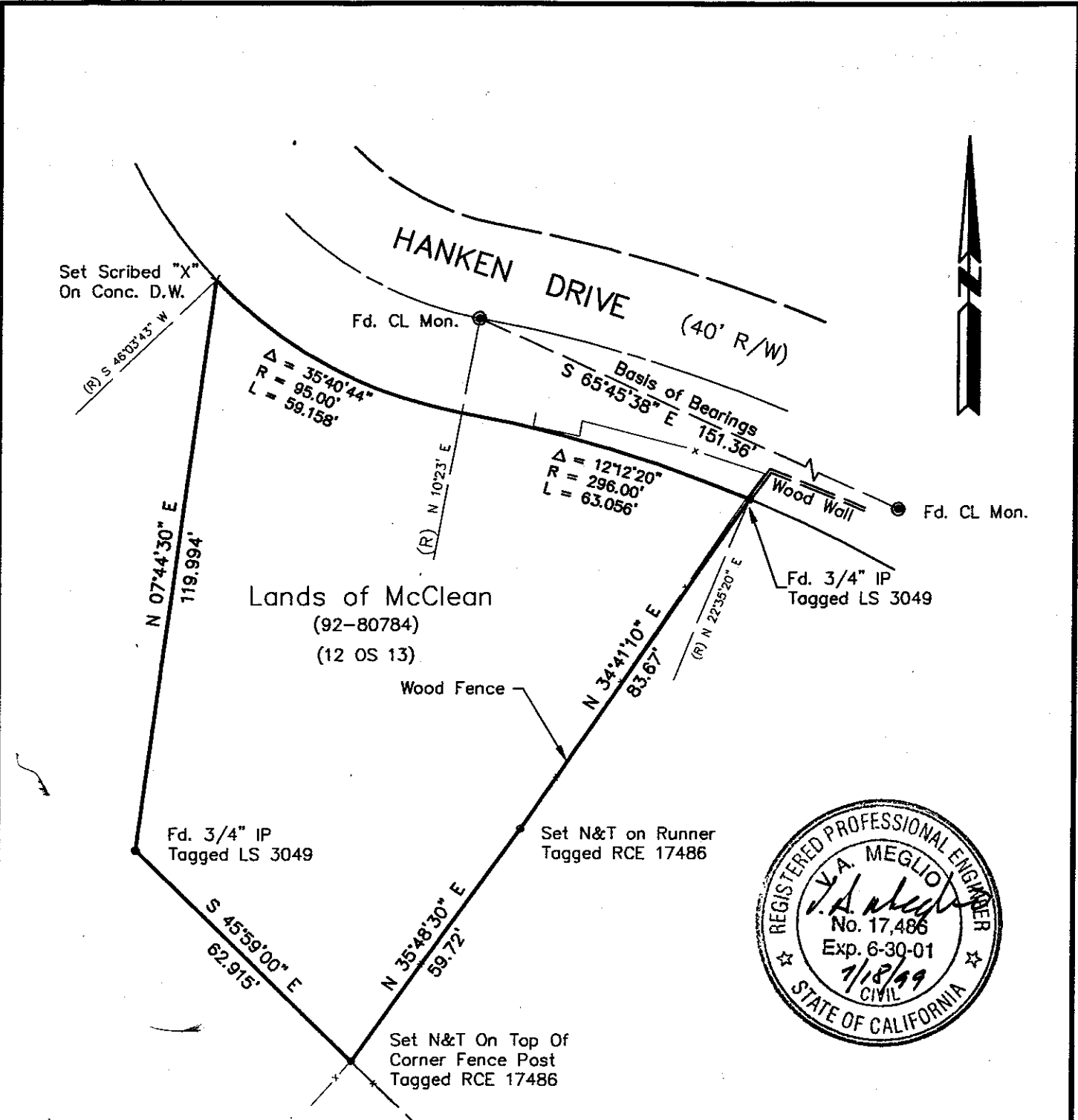
and examined and filed

Signed John M. Woolley P.L.S or R.C.E. No. 26450

Title DEPUTY



County Surveyor's Comment _____



**Plat of Corner Record
Lands of McClean**
(12 OS 13)

Kentfield Marin County California
Scale: 1" = 30' June 1999

Vincent A. Meglio, Inc.
Civil Engineer
27 Commercial Blvd. * Novato, CA 94949