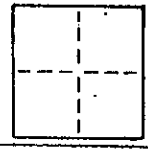


1071  
RECEIVED  
MAY 03 1984

### CORNER RECORD

Marin County Public Works

COUNTY OF \_\_\_\_\_ T. \_\_\_\_\_ R. \_\_\_\_\_ MERIDIAN \_\_\_\_\_ CALIFORNIA \_\_\_\_\_  
 CORNER TYPE: GOV'T. CORNER  MEANDER  RANCHO  CONTROL  OTHER  Lot 5/7, Lot 6/7  
 CORNER IDENTIFICATION -- DATE OF VISIT \_\_\_\_\_ 19\_\_\_\_ 12 Maps 79



A.P. # 71-211-05 & 07

CORNER -- LEFT AS FOUND  FOUND AND TAGGED  REESTABLISHED OBLITERATED CORNER  REBUILT

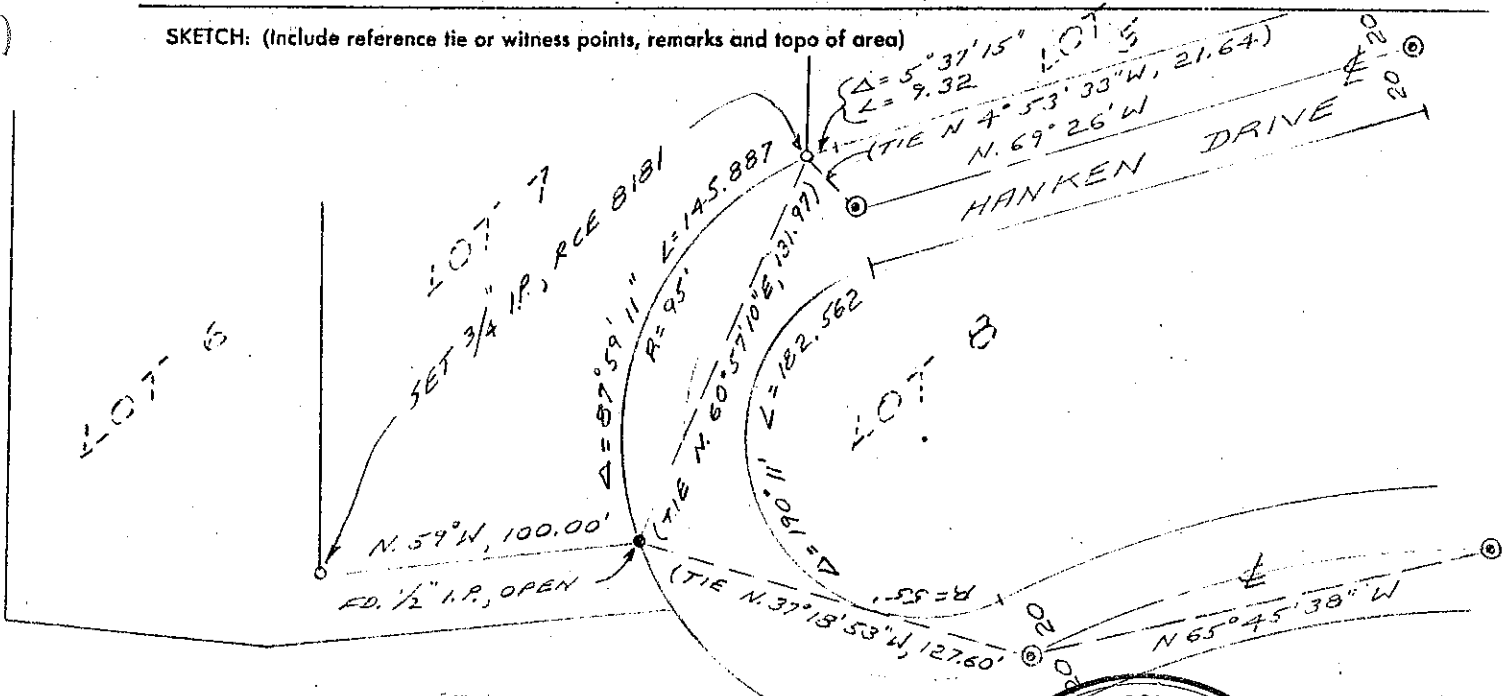
PHYSICAL DESCRIPTION OF CORNER FOUND; EVIDENCE AND METHOD USED TO IDENTIFY OR REESTABLISH  
 Set 3/4" iron pipe, tagged RCE 8181, at Southwesterly end of dividing line Lots 5/7 and Southeast end of dividing line Lots 6/7, "Map of Del Mesa Heights, Unit One, in the County of Marin, Calif." filed in Book 12 of Maps at Page 66, Marin County Records.

PHYSICAL DESCRIPTION OF MONUMENTS REBUILT OR PERPETUATED

As shown.

CALIFORNIA COORDINATE SYSTEM ORDER: FIRST  SECOND  THIRD   
 STATIONS USED: NGS (USC & GS)  STATE  COUNTY  OTHER  STATION \_\_\_\_\_ STATION \_\_\_\_\_  
 ZONE \_\_\_\_\_ ELEVATION \_\_\_\_\_ NORTHINGS (Y) \_\_\_\_\_ EASTINGS (X) \_\_\_\_\_

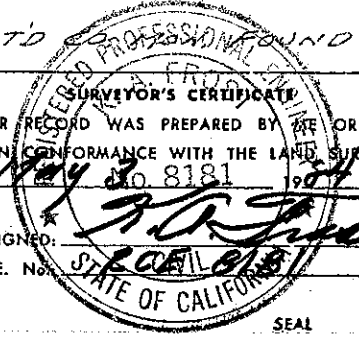
SKETCH: (Include reference tie or witness points, remarks and topo of area)



© - INDICATES STD PROFESSIONAL FOUND

THIS CORNER RECORD WAS PREPARED BY ME OR UNDER MY DIRECTION IN CONFORMANCE WITH THE LAND SURVEYORS ACT ON \_\_\_\_\_ 1984

SIGNED: \_\_\_\_\_  
 L.S. or R.C.E. No. \_\_\_\_\_  
 STATE OF CALIFORNIA



THE CORNER RECORD WAS RECEIVED \_\_\_\_\_ 1984 AND EXAMINED AND FILED \_\_\_\_\_ 1984 BY: \_\_\_\_\_ TITLE: Deputy County Surveyor

DOCUMENT NO. \_\_\_\_\_ CIVIL STATEMENT ON BACK OF SHEET YES  NO

