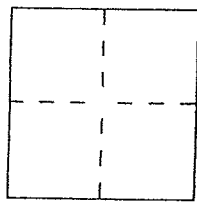


CORNER RECORD

Document Number 071-191-36
City of Kentfield County of Marin, California
Brief Legal Description Marin Assessor's Parcel 071-191-36



CORNER TYPE

- Government Corner
- Meander
- Rancho
- Date of Survey _____
- Control
- Property
- Other

COORDINATES (Optional)

N. _____
E. _____
Zone _____ Datum _____
Elev. _____

Corner — Left as found Found and tagged Established Reestablished Rebuilt

Identification and type of corner found: Evidence used to identify or procedure used to establish or reestablish the corner:

Found Standard Street Monuments Per
36 O.S. 37

A description of the physical condition of the monument as found and as set or reset:

Set new boundary line points as shown
on the "Sketch Map" cover

SURVEYOR'S STATEMENT

This Corner Record was prepared by me or under my direction in conformance with the Land Surveyors' Act on June 19, 2013

Signed David Harp L.S. or R.C.E. Number LS 5290



COUNTY SURVEYOR'S STATEMENT

This Corner Record was received JUNE 21, 2013 and examined

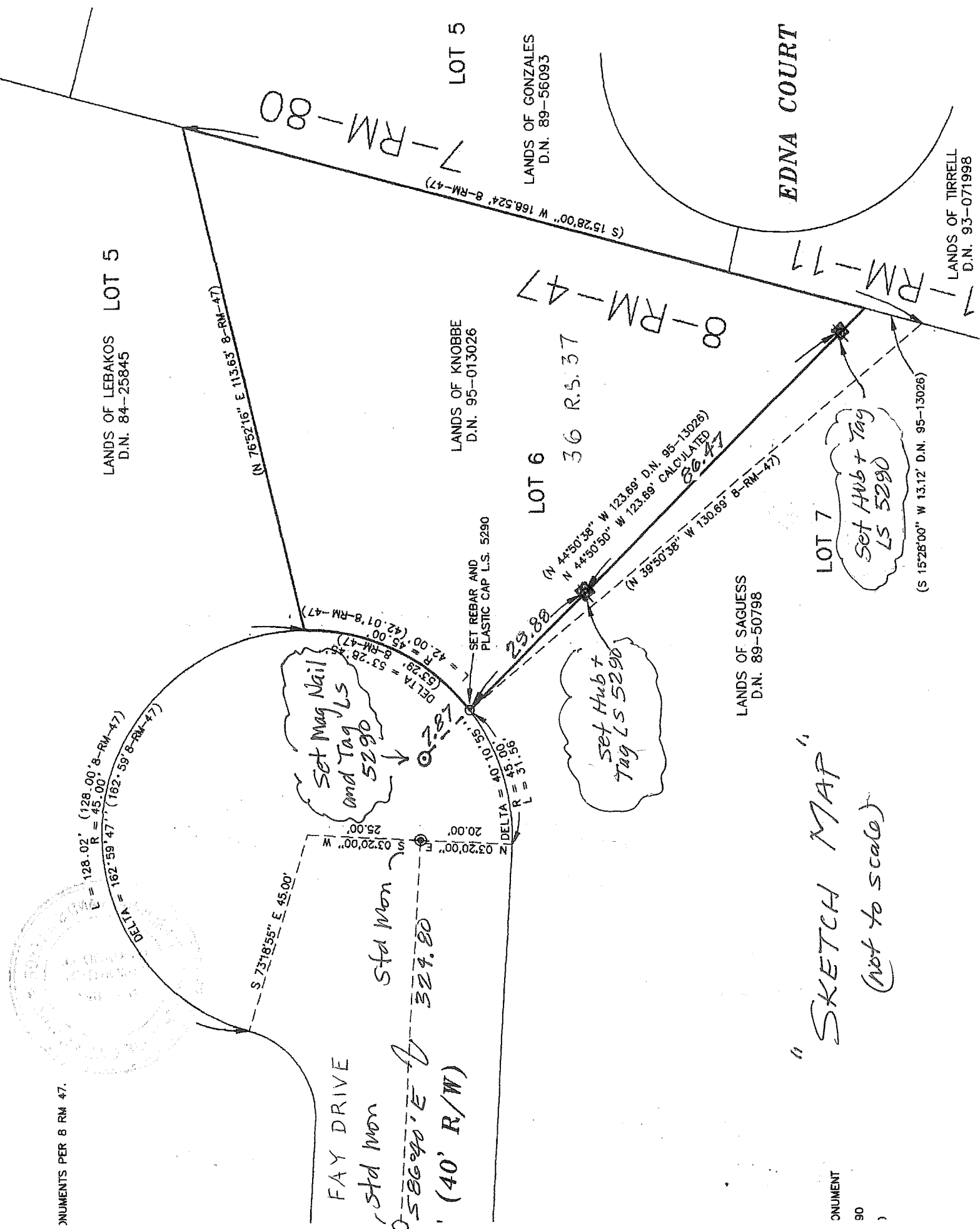
and filed July 29th 2013

Signed Richard G. Simonitch Title DEPUTY CO. SURVEYOR



County Surveyor's Comment _____

MONUMENTS PER 8 RM 47.



LANDS OF LEBAKOS LOT 5
D.N. 84-25845

LOT 5

LANDS OF GONZALES
D.N. 89-56093

EDNA COURT

LANDS OF TURRELL
D.N. 93-071998

LANDS OF KNOBBE
D.N. 95-013026

LOT 6
36 R.5.37

LOT 7

Set Hub + Tag
LS 5290

(S 15°28'00" W 13.12' D.N. 95-13026)

LANDS OF SAGUESS
D.N. 89-50798

"SKETCH MAP"

(not to scale)

MONUMENT

90