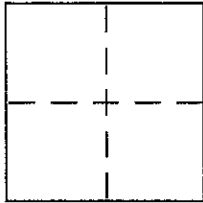


CORNER RECORD

Document Number 71.191.03

City of Vicinity of San Rafael County of MARIN, California

Brief Legal Description LOT 5 MAP of FAY TERRACE (8 RM 47)



CORNER TYPE

Government Corner Control
Meander Property
Rancho Other
Date of Survey NOV. 25th 2003

COORDINATES (Optional)

N. _____
E. _____
Zone _____ NAD27 NAD83
NAD83 Epoch _____
Elev. _____
Vert. Datum: NGVD29 NAVD88
Meas. Units: Metric Imperial

Corner - Left as found Found and tagged Established Reestablished Rebuilt

Identification and type of corner found: Evidence used to identify or procedure used to establish or reestablish the corner:

re establish the southerly line of LOT 5, MAP of FAY TERRACE (8 RM 47), from existing standard street MONUMENTS of RECORD ON FAY DRIVE. Refer to sketch on reverse side for details

A description of the physical condition of the monument as found and as set or reset:

set lead plug & BRASS NAIL with BRASS TAG LS 5379 in top of curb on FAY DRIVE ON A PROJECTION of the PROPERTY line & BEING 6.0' ft from the actual corner. ALSO set 1/2" rebar with PLS CAP 5379 @ southeasterly corner.

SURVEYOR'S STATEMENT

This Corner Record was prepared by me or under my direction in conformance with the Land Surveyors Act on December 15 2003
Signed Douglas J. Scranton P.L.S or R.C.E. No. PLS 5379



COUNTY SURVEYOR'S STATEMENT

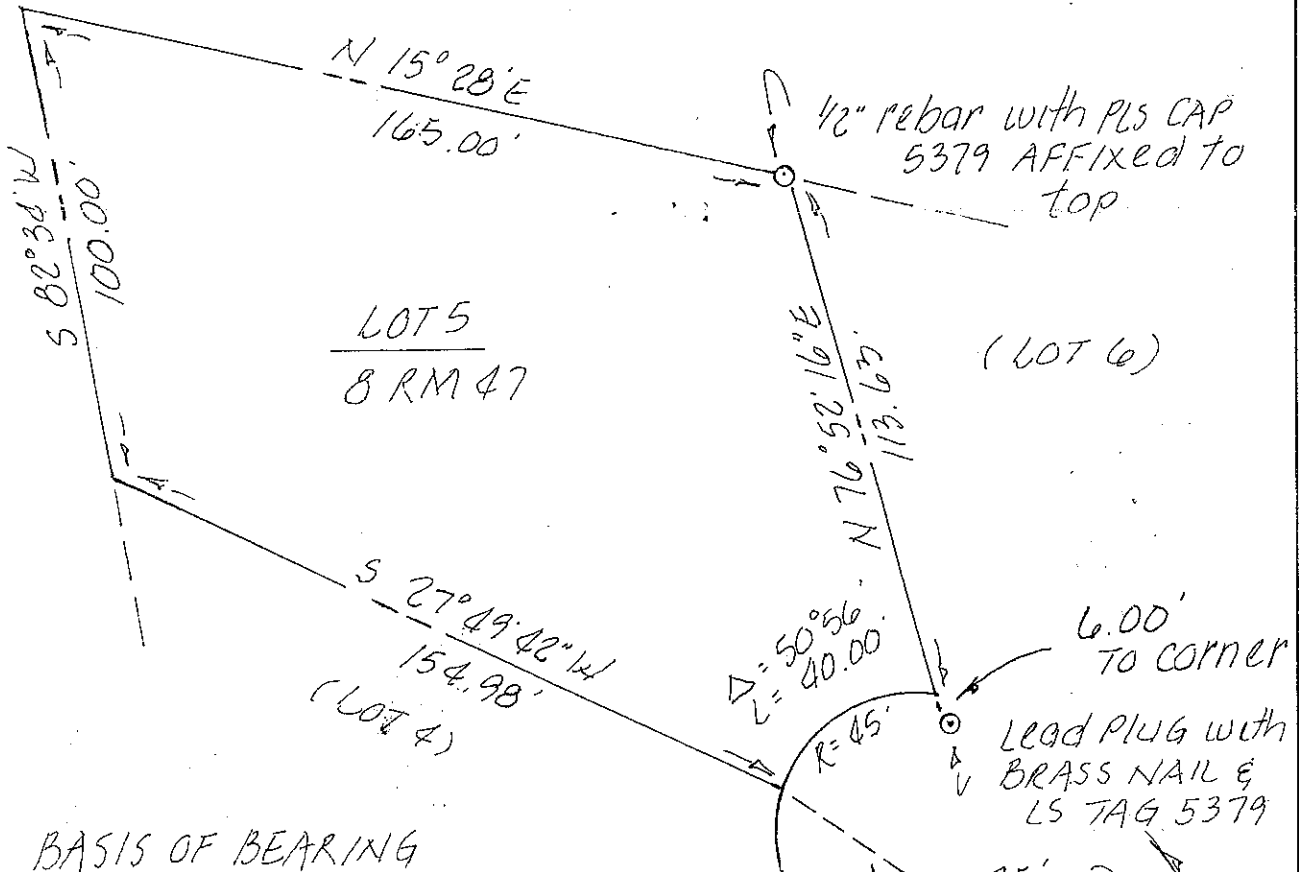
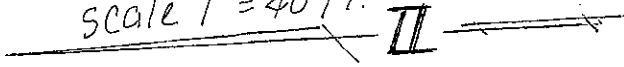
This Corner Record was received DECEMBER 18, 2003
and examined and filed DECEMBER 30, 2003
Signed [Signature] P.L.S or R.C.E. No. 7128
Title COUNTY SURVEYOR



County Surveyor's Comment _____

Prepared by Douglas Scranton Surveying Modesto, California

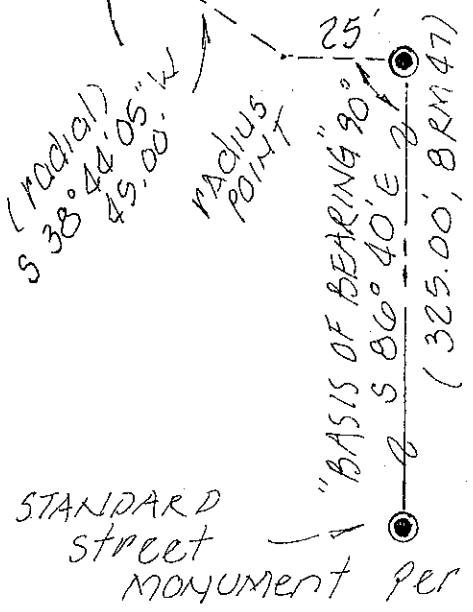
scale 1" = 40 ft.



BASIS OF BEARING

TAKEN AS S 86° 40' E BETWEEN MONUMENTS SHOWN

ALL DISTANCES GIVEN IN FEET & DECIMALS THEREOF
NO EASEMENTS ARE SHOWN



NOTE: TAG SET ON TOP OF CURB ON LOT LINE PROJECTED