

CORNER RECORD

A.P.# 71-173-34

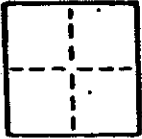
6070

1 of 1

COUNTY OF MARIN T. _____ E. _____ MERIDIAN CALIFORNIA

CORNER TYPE: GOVT. CORNER MEANDER RANCHO CONTROL OTHER

CORNER IDENTIFICATION - DATE OF VISIT _____ 19__



CORNER - LEFT AS FOUND FOUND AND TAGGED REESTABLISHED OBLITERATED CORNER RESULT

PHYSICAL DESCRIPTION OF CORNER FOUND; EVIDENCE AND METHOD USED TO IDENTIFY OR REESTABLISH

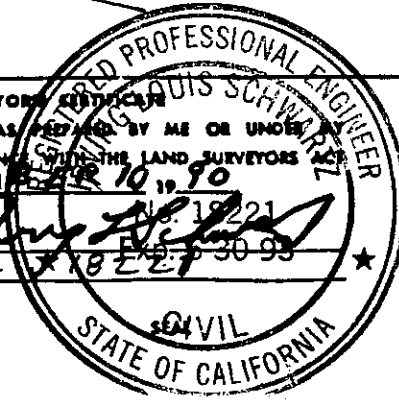
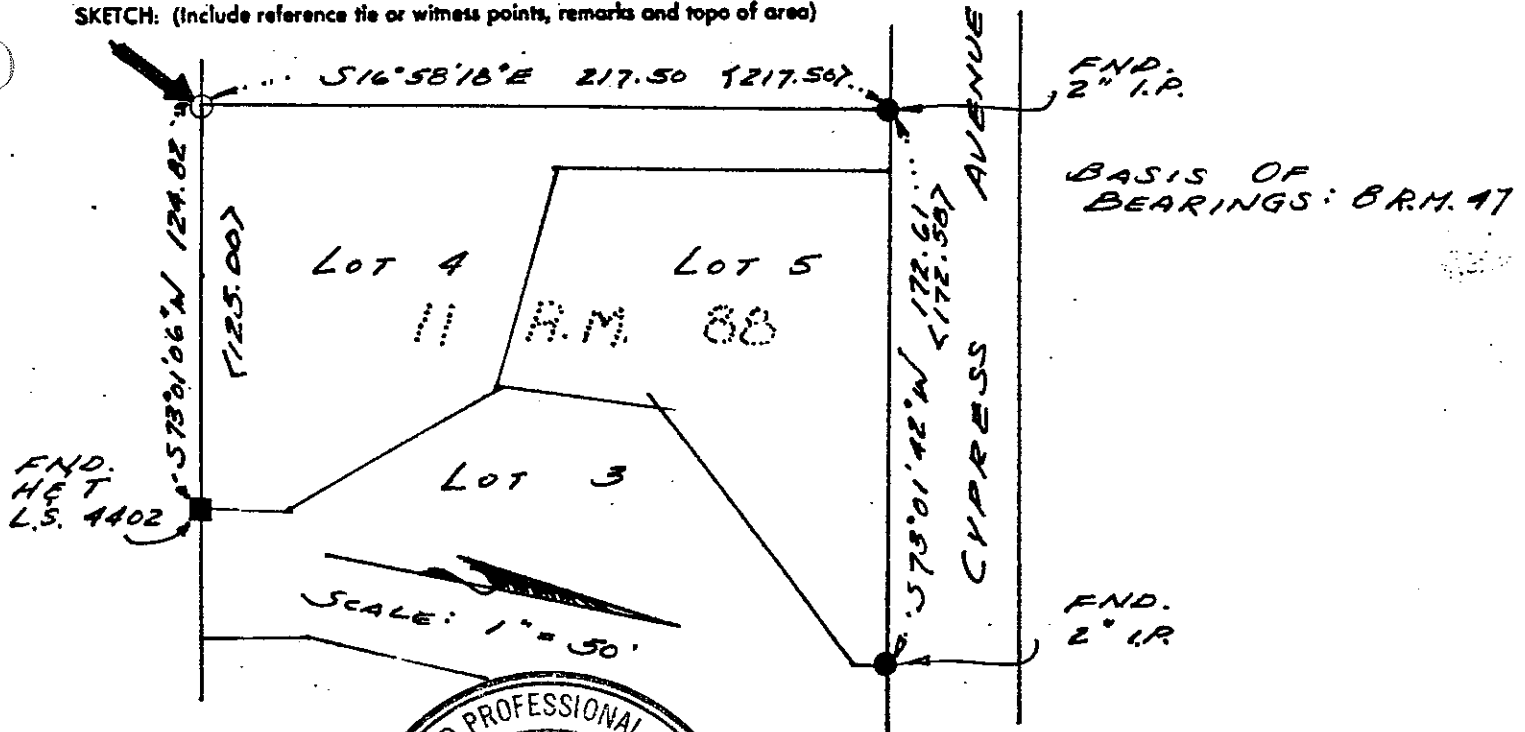
A.P. 071-173-34

PHYSICAL DESCRIPTION OF MONUMENTS RESULT OR PERPETUATED

SET 3/4" IRON PIPE W/ TAG R.C.E. 18221,
SOUTHWEST CORNER LOT 4, 11 R.M. 88

CALIFORNIA COORDINATE SYSTEM ORDER: FIRST SECOND THIRD
STATIONS USED: NGS (USC & GS) STATE COUNTY OTHER STATION _____ STATION _____
ZONE _____ ELEVATION _____ NORTHINGS (Y) _____ EASTINGS (X) _____

SKETCH: (Include reference tie or witness points, remarks and topo of area)



SURVEYOR'S CERTIFICATE
THIS CORNER RECORD WAS RECEIVED BY ME OR UNDER MY
DIRECTION IN CONFORMANCE WITH THE LAND SURVEYORS ACT
ON SEPTEMBER 10, 1990
SIGNED: [Signature] 18221
L.S. or R.C.E. No. 18221

COUNTY SURVEYOR'S CERTIFICATE
THE CORNER RECORD WAS RECEIVED
AND EXAMINED AND FILED
BY: [Signature]
TITLE: C 30212
DOCUMENT No. _____
STATEMENT ON BACK OF SHEET _____

