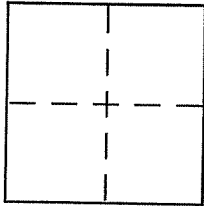


CORNER RECORD

Document Number AP# 071-164-36
City of KENTFIELD County of MARIN, California

Brief Legal Description LOT 24 & PORTION OF LOT 23, ZRM 87



CORNER TYPE

Government Corner Control
Meander Property
Rancho Other
Date of Survey 6/10/10

COORDINATES (Optional)

N. _____
E. _____
Zone _____ NAD27 NAD83
NAD83 Epoch _____
Elev. _____
Vert. Datum: NGVD29 NAVD88
Meas. Units: Metric Imperial

Corner - Left as found Found and tagged Established Reestablished Rebuilt

Identification and type of corner found: Evidence used to identify or procedure used to establish or reestablish the corner:

SEE PAGE 2

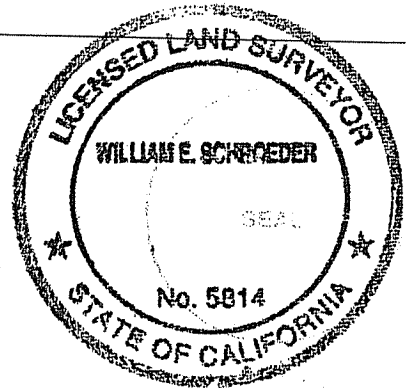
A description of the physical condition of the monument as found and as set or reset:

SEE PAGE 2

SURVEYOR'S STATEMENT

This Corner Record was prepared by me or under my direction in conformance with the Land Surveyor's Act on JUNE 14, 2010

Signed William Schroeder P.L.S or R.C.E. No. 5814



COUNTY SURVEYOR'S STATEMENT

This Corner Record was received JUNE 21, 2010

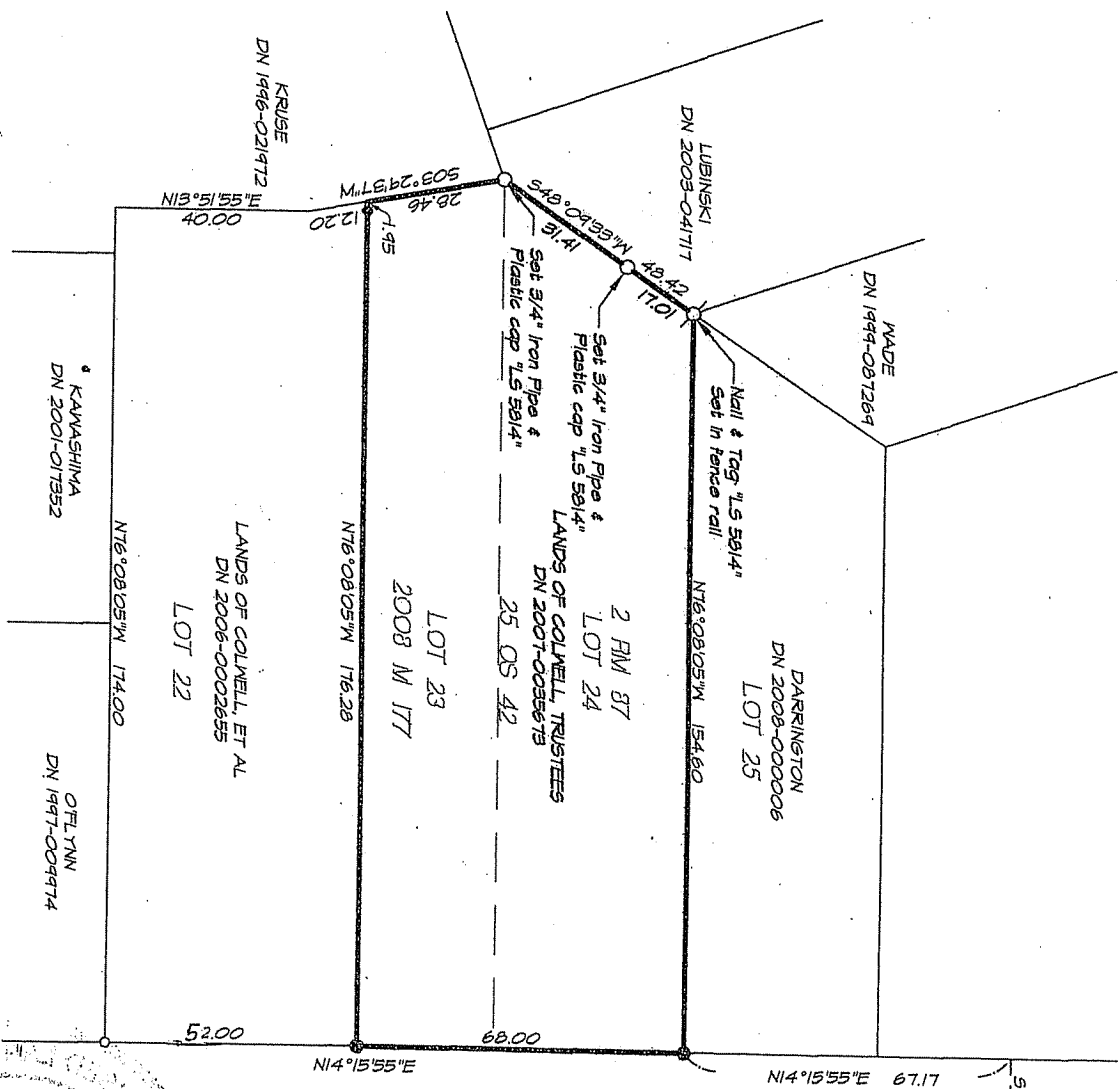
and examined and filed JULY 20, 2010

Signed [Signature] P.L.S or R.C.E. No. 7128

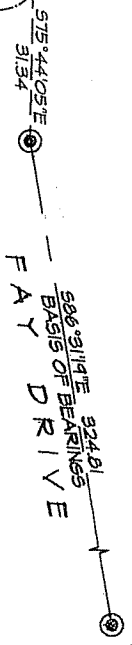
Title COUNTY SURVEYOR



County Surveyor's Comment _____



LAUREL GROVE AVE (60' R/W)



- LEGEND**
- ⊙ = Standard Street Monument Per 2008 MAPS 177
 - ⊙ = 3/4" Iron Pipe with plastic cap "1.5 5814"
 - = Set Monument as noted

SCALE 1" = 40'

