

CORNER RECORD

Document Number A.P.# 71-152-48

City of KENTFIELD

County of MARIN, California

Brief Legal Description 2001 R.S. 245

CORNER TYPE

Government Corner Control
 Meander Property
 Rancho Other
 Date of Survey 11/19/03

COORDINATES (Optional)

N. _____
 E. _____
 Zone NAD27 NAD83
 NAD83 Epoch _____
 Elev. _____
 Vert. Datum: NGVD29 NAVD88
 Meas. Units: Metric Imperial

Corner- Left as found Found and tagged Established Reestablished Rebuilt

Identification and type of corner found: Evidence used to identify or procedure used to establish or reestablish the corner:
ESTABLISHED THE EASTERLY LINE OF THE PROPERTY AS DELINEATED ON 2001 R.S. 245 USING POINTS FOUND ON SAID MAP.

A description of the physical condition of the monument as found and as set or reset: SEE SHEET 2.

SURVEYOR'S STATEMENT

This Corner Record was prepared by me or under my direction in conformance with the Land Surveyor's Act on NOVEMBER 17 2003

Signed Lawrence P. Doyle P.L.S. or R.C.E. No. P.L.S. 4694



COUNTY SURVEYOR'S STATEMENT

This Corner Record was received NOVEMBER 24, 2003

and examined and filed DECEMBER 9, 2003

Signed [Signature] P.L.S. or R.C.E. No. 7128

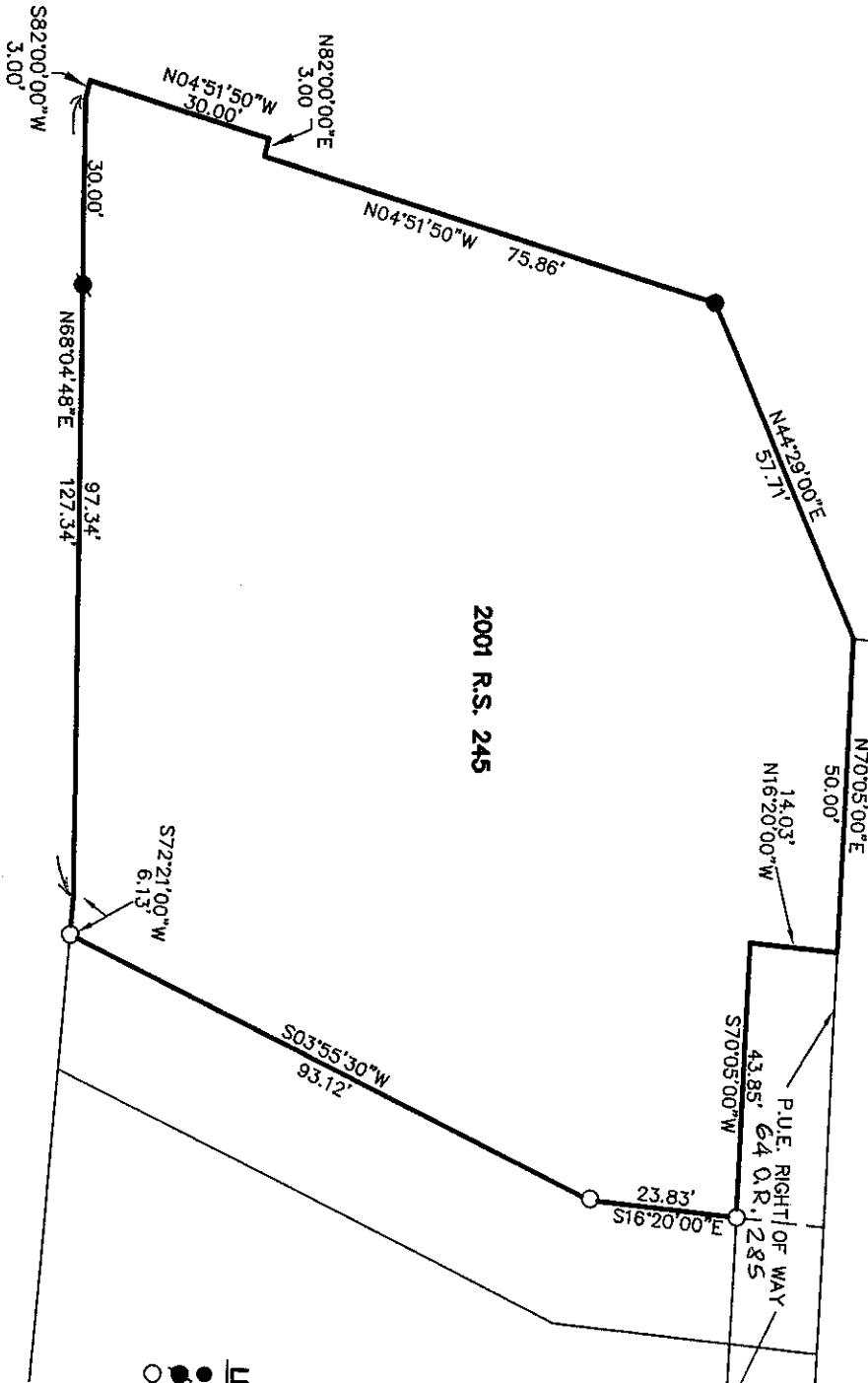
Title COUNTY SURVEYOR



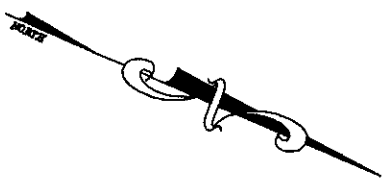
County Surveyor's Comment _____

LOT 22 8 R.M 51

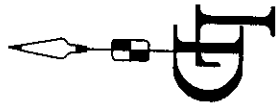
2001 R.S. 245



- LEGEND**
- FOUND PIPE AND PLUG L.S. 4694
 - FOUND NAIL AND TAG L.S. 4694
 - SET 3/4" PIPE AND PLUG L.S. 4694



BASIS OF BEARING
 THE BASIS OF BEARING FOR THIS SURVEY IS ACCORDING TO FOUND POINTS PER 2001 R.S. 245



CORNER RECORD	
2001 R.S. 245	
KENTFIELD MARIN COUNTY	CALIFORNIA
LAWRENCE P. DOYLE	
LAND SURVEYOR/CIVIL ENGINEER	
P.O. BOX 1609 MILL VALLEY CA 94942 (415-388-9585)	
SCALE: 1" = 30'	DRAWN BY:
DATE: 11/19/03	SHEET 1 OF 1
DRAWING NO. 1219-03	