

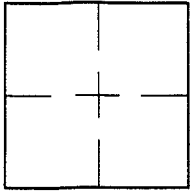
CORNER RECORD

Document Number A.P.# 071-152-43

City of KENTFIELD

County of MARIN, California

Brief Legal Description RECORDING INFO



CORNER TYPE COORDINATES (Optional)

Government Corner Control

Meander Property

Rancho Other

Date of Survey 05/04/05

N. _____
 E. _____
 Zone _____ NAD27 NAD83
 NAD83 Epoch _____
 Elev. _____
 Vert. Datum: NGVD29 NAVD88
 Meas. Units: Metric Imperial

Corner- Left as found Found and tagged Established Reestablished Rebuilt

Identification and type of corner found: Evidence used to identify or procedure used to establish or reestablish the corner:
ESTABLISHED PROPERTY CORNER AS SHOWN ON 2001 M. 245

A description of the physical condition of the monument as found and as set or reset: SEE SHEET 2.

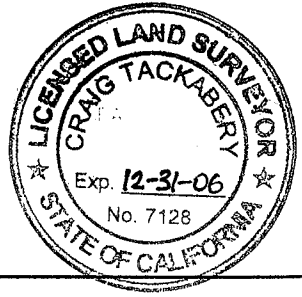
SURVEYOR'S STATEMENT

This Corner Record was prepared by me or under my direction in conformance with
 the Land Surveyor's Act on MAY 4 2005
 Signed Lawrence P. Doyle P.L.S. or R.C.E. No. P.L.S. 4694

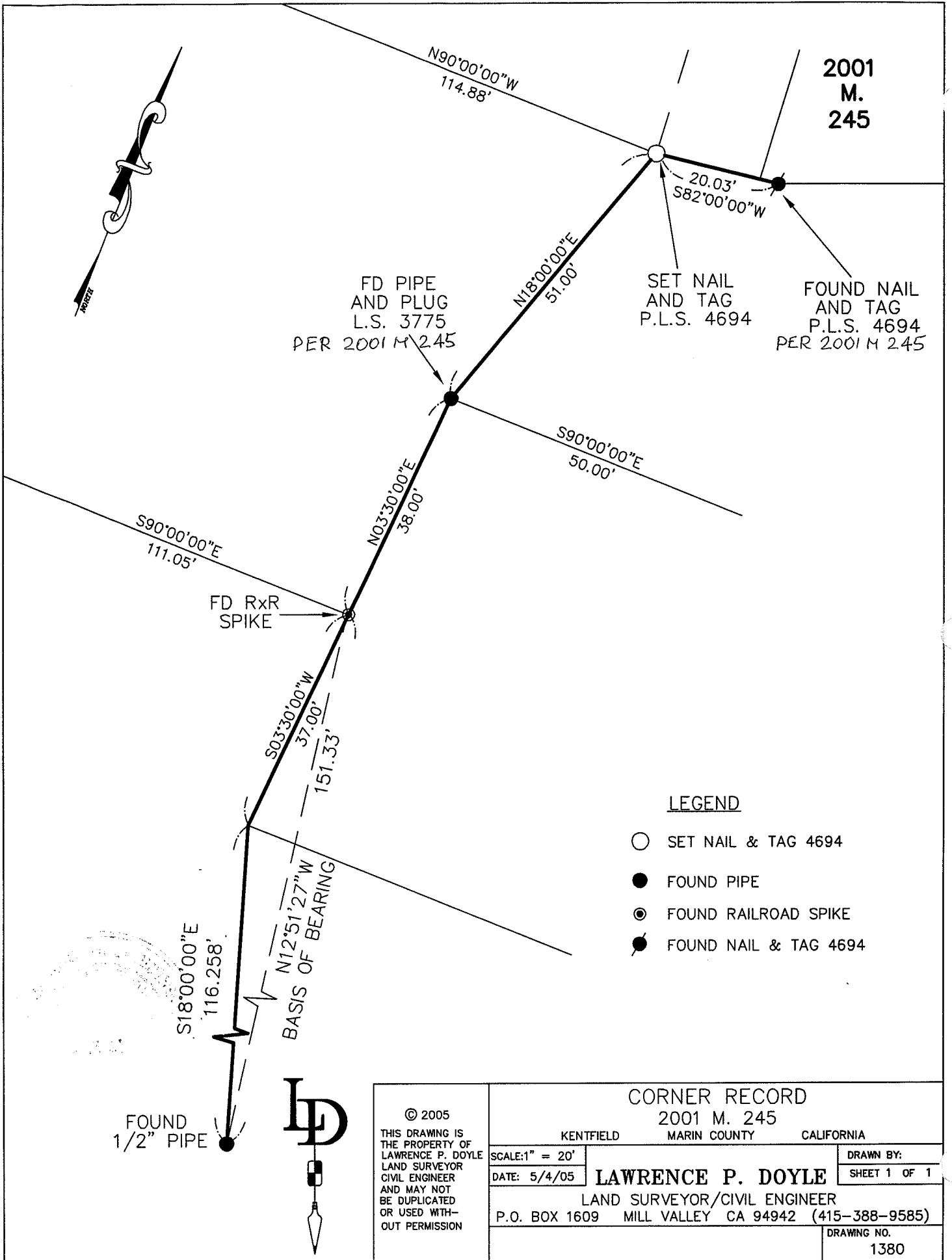


COUNTY SURVEYOR'S STATEMENT

This Corner Record was received MAY 31, 2005
 and examined and filed JULY 28, 2005
 Signed [Signature] P.L.S. or R.C.E. No. 7128
 Title COUNTY SURVEYOR



County Surveyor's Comment _____



LEGEND

- SET NAIL & TAG 4694
- FOUND PIPE
- ⊙ FOUND RAILROAD SPIKE
- FOUND NAIL & TAG 4694

FOUND
1/2" PIPE



© 2005 THIS DRAWING IS THE PROPERTY OF LAWRENCE P. DOYLE LAND SURVEYOR CIVIL ENGINEER AND MAY NOT BE DUPLICATED OR USED WITHOUT PERMISSION			CORNER RECORD 2001 M. 245 KENTFIELD MARIN COUNTY CALIFORNIA		
SCALE: 1" = 20'	LAWRENCE P. DOYLE LAND SURVEYOR/CIVIL ENGINEER P.O. BOX 1609 MILL VALLEY CA 94942 (415-388-9585)		DRAWN BY: SHEET 1 OF 1		
DATE: 5/4/05			DRAWING NO. 1380		