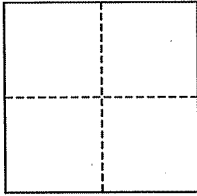


CORNER RECORD

City of Kentfield

Document Number APN 71-152-34
County of Marin, California

Brief Legal Description Portion of Lot 14, 1 RM 11 described in DN 04-095836, also known as APN 071-152-34



CORNER TYPE

Government Corner Control
Meander Property
Rancho Other
Date of Survey _____

COORDINATES (Optional)

N. _____
E. _____
Zone _____ NAD27 NAD83
NAD83 Epoch _____
Elev. _____
Vert. Datum: NGVD29 NAVD88
Meas. Units: Metric Imperial

Corner- Left as found Found and tagged Established Reestablished Rebuilt

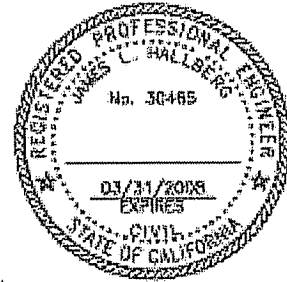
Identification and type of corner found: Evidence used to identify or procedure used to establish or reestablish the corner:
Found standard street monuments on Laurel Grove Ave. per 16 OS 43, IP and Hub & Tack per 2005 OS 315
as shown, and IP per 2005 RS 2 as shown.

A description of the physical condition of the monument as found and as set or reset: Set IP, RCE 30465, as shown,
and Hub & Tack as shown.

SURVEYOR'S STATEMENT

This corner Record was prepared by me or under my direction in conformance with
the Land Surveyor's Act on June 5, 2006

Signed [Signature] P.L.S. or R.C.E. No. 30465

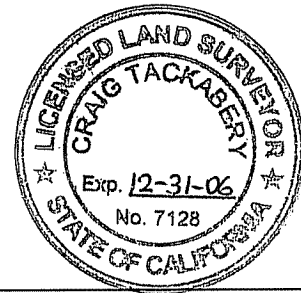


COUNTY SURVEYOR'S STATEMENT

This Corner Record was received JUNE 6, 2006
and examined and filed JULY 18, 2006

Signed [Signature] P.L.S. or R.C.E. No. 7128

Title COUNTY SURVEYOR



County Surveyor's Comment _____

REFERENCES

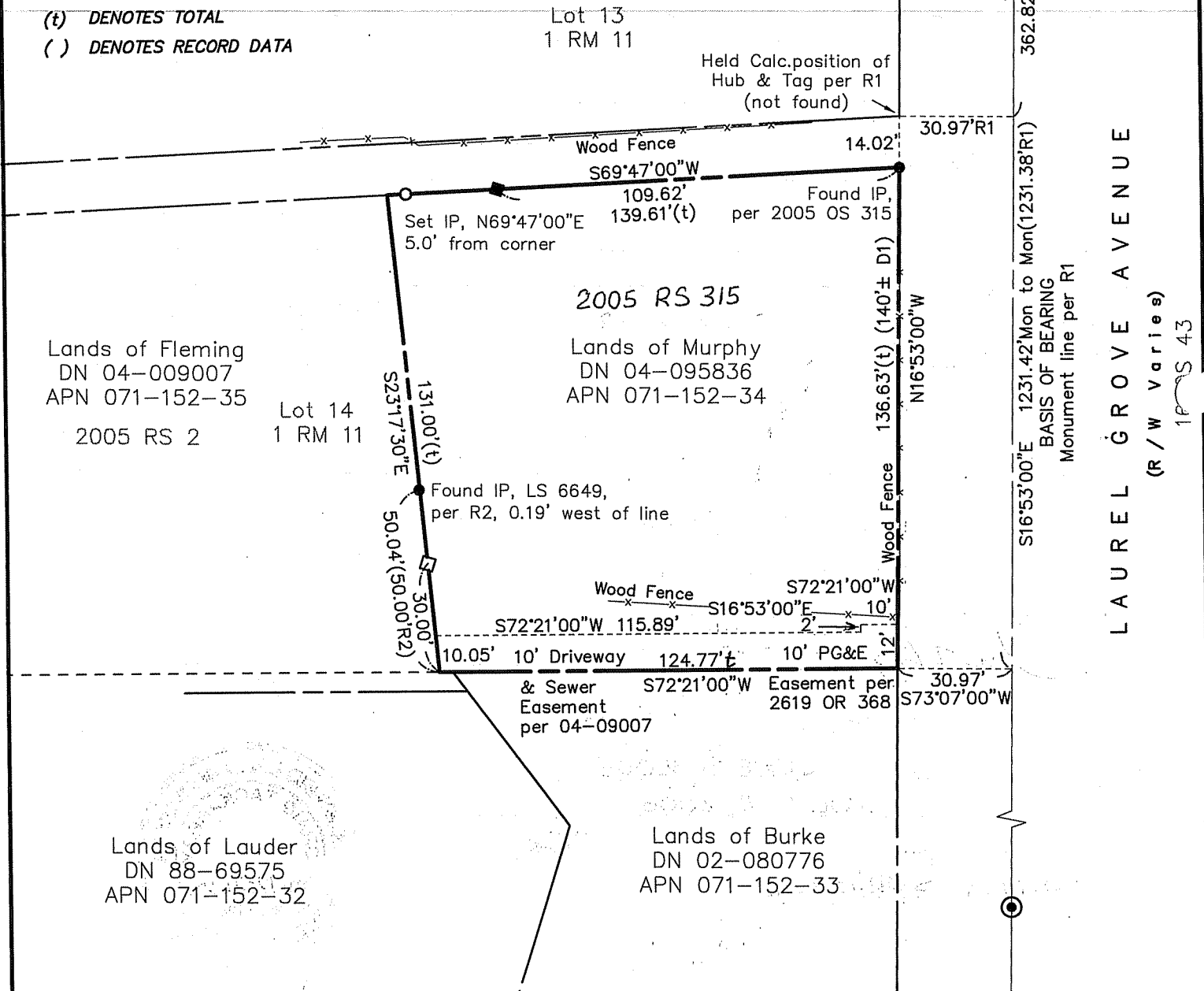
- R1 DENOTES 16 OS 43
- R2 DENOTES 2005 RS 2
- R3 DENOTES 1 RM 11
- D1 DENOTES DN 04-095836

LEGEND

- ⊙ FOUND STD. STREET MONUMENT PER 16 RS 43
- FOUND 3/4" I.P. & PLASTIC PLUG, AS SHOWN
- FOUND HUB & TACK PER 2005 OS 315
- SET 3/4" I.P. & PLASTIC PLUG, RCE 30465
- SET WOOD HUB & TACK / GINNEY
- (t) DENOTES TOTAL
- () DENOTES RECORD DATA



SCALE: 1" = 40'



Note: All distances are in feet and decimals thereof.

SHEET	1	OF	1
SCALE:	1" = 40'	DESIGN:	XXX
DATE:	JUNE 2006	DRAWN:	SMC
FILE:	2006-070	CHECKED:	J.L.H
2006-070\DWG\BAS-BNDY.DWG,COR-REC			

J.L. ENGINEERING
CIVIL ENGINEERS-LAND SURVEYORS
 1539 4th ST., SAN RAFAEL, CA. 94901 (415) 457-6647

Corner Record

Lands of Murphy - 105 Laurel Grove Ave.
 APN 071-152-34, Kentfield, Marin County, CA