

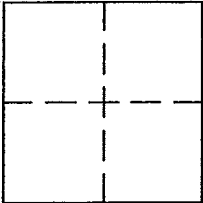
CORNER RECORD

Document Number APN 071-151-01

City of KENTFIELD

County of MARIN, California

Brief Legal Description SEE 16 OS 44



CORNER TYPE

Government Corner  Control   
Meander  Property   
Rancho  Other   
Date of Survey MARCH 8, 2013

COORDINATES (Optional)

N. \_\_\_\_\_  
E. \_\_\_\_\_  
Zone \_\_\_\_\_ NAD27  NAD83   
NAD83 Epoch \_\_\_\_\_  
Elev. \_\_\_\_\_  
Vert. Datum: NGVD29  NAVD88   
Meas. Units: Metric  Imperial

Corner - Left as found  Found and tagged  Established  Reestablished  Rebuilt

Identification and type of corner found: Evidence used to identify or procedure used to establish or reestablish the corner:  
FOUND MONUMENTS AS SHOWN ON 16 OS 44 AND ON REVERSE.

A description of the physical condition of the monument as found and as set or reset:  
SET PK & TAG IN CONCRETE FOOTING AS SHOWN ON REVERSE.

SURVEYOR'S STATEMENT

This Corner record was prepared by me or under my direction in conformance with  
the Land Surveyor's Act on APRIL 21, 2013

Signed [Signature] P.L.S. or R.C.E. No. PLS 5296

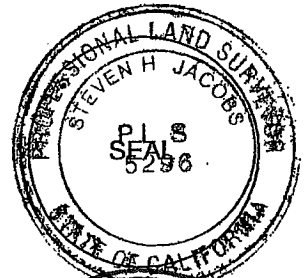
COUNTY SURVEYOR'S STATEMENT

This Corner Record was received JULY 15, 2013  
and examined and filed AUGUST 21 2013

Signed [Signature] P.L.S. or R.C.E. No. 7821

Title DEPUTY COUNTY SURVEYOR

County Surveyor's Comment \_\_\_\_\_

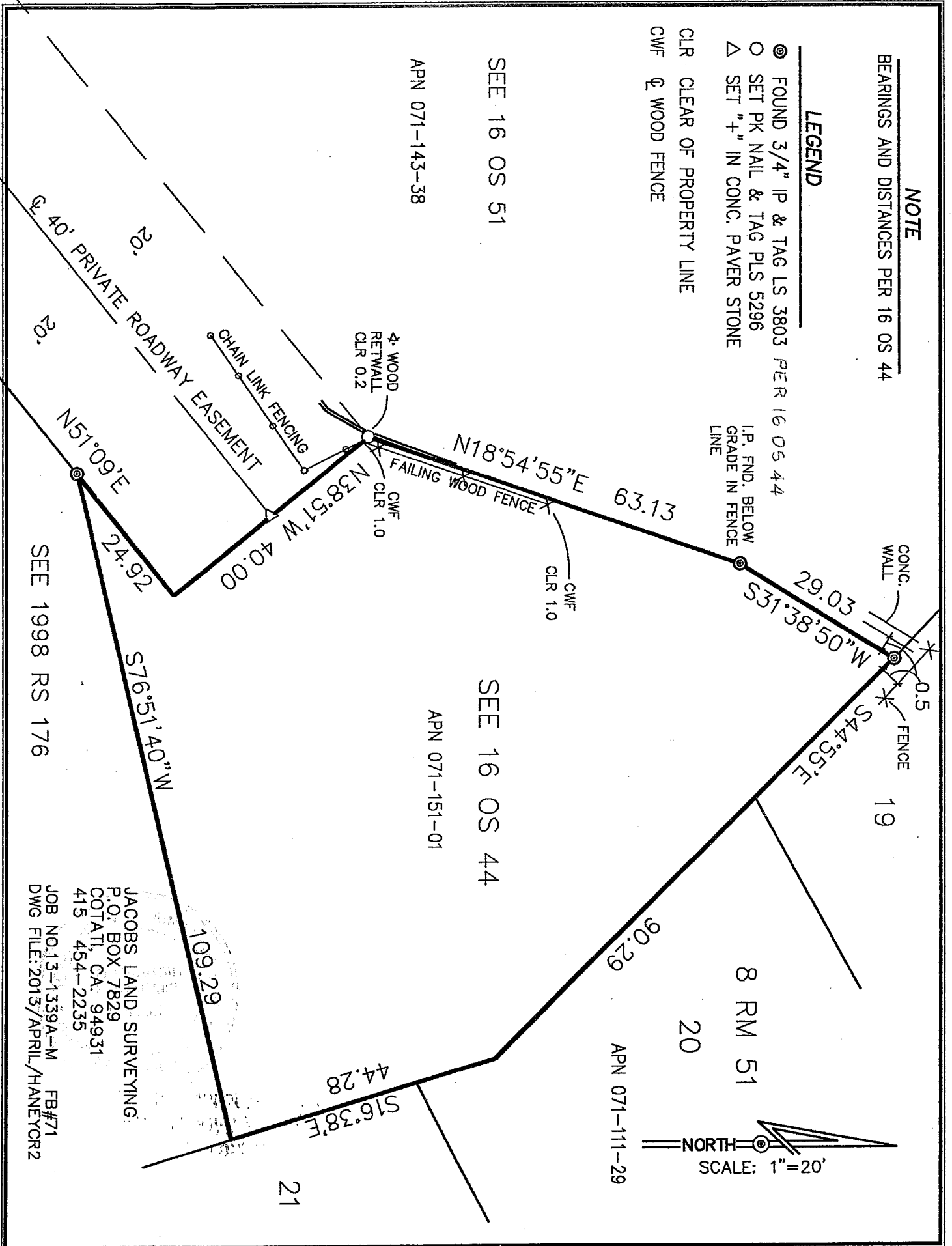


**NOTE**  
 BEARINGS AND DISTANCES PER 16 OS 44

**LEGEND**

- ⊙ FOUND 3/4" IP & TAG LS 3803 PER 16 OS 44
- SET PK NAIL & TAG PLS 5296
- △ SET "4" IN CONC. PAVER STONE
- CLR CLEAR OF PROPERTY LINE
- CWF 4 WOOD FENCE

I.P. FND. BELOW  
 GRADE IN FENCE  
 LINE



SEE 16 OS 51

APN 071-143-38

SEE 16 OS 44

APN 071-151-01

APN 071-111-29

SEE 1998 RS 176

JACOBS LAND SURVEYING  
 P.O. BOX 7829  
 COTATI, CA. 94931  
 415 454-2235

JOB NO. 13-1339A-M  
 DWG FILE: 2013/APRIL/HANEYCR2

