

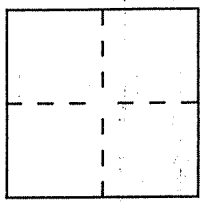
CORNER RECORD

Document Number 071-151-01

City of KENTFIELD

County of MARIN, California

Brief Legal Description APN 71-151-01



CORNER TYPE

- Government Corner
- Meander
- Rancho
- Date of Survey 10.29.1996
- Control
- Property
- Other

COORDINATES (Optional)

N. _____
 E. _____
 Zone _____ Datum _____
 Elev. _____

Corner — Left as found Found and tagged Established Reestablished Rebuilt

Identification and type of corner found: Evidence used to identify or procedure used to establish or reestablish the corner:
RESET INTERSECTION OF THE TWO COURSES N 38° 51' 00" W, 40.00 FT AND S 51° 09' 00" W 24.92' AS DEPICTED UPON 16 05 44; RESET FROM FOUND MONUMENTATION ALONG THE SOUTHERLY LINE OF APN 71-151-01 AS SURVEYED PER SAID 16 05 44. (REFER TO SKETCH ON PAGE 2.)

A description of the physical condition of the monument as found and as set or reset:
SET 1/2" REBAR WITH PLS 5379 "SCRANTON" EMBOSSED IN YELLOW CAP AFFIXED TO REBAR AND SET FLUSH WITH EXISTING GROUND GRADE.

SURVEYOR'S STATEMENT

This Corner Record was prepared by me or under my direction in conformance with the Land Surveyors' Act on DECEMBER 2ND 1996.

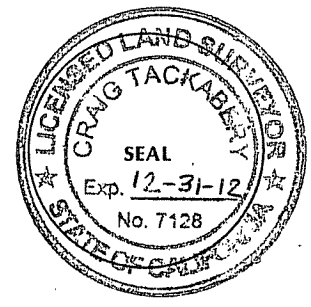
Signed Douglas J. Scranton L.S. or R.C.E. Number PLS 5379 RENEWAL 6-30-2000



COUNTY SURVEYOR'S STATEMENT

This Corner Record was received APRIL 25, 2011 and examined and filed MAY 18, 2011.

Signed [Signature] Title COUNTY SURVEYOR

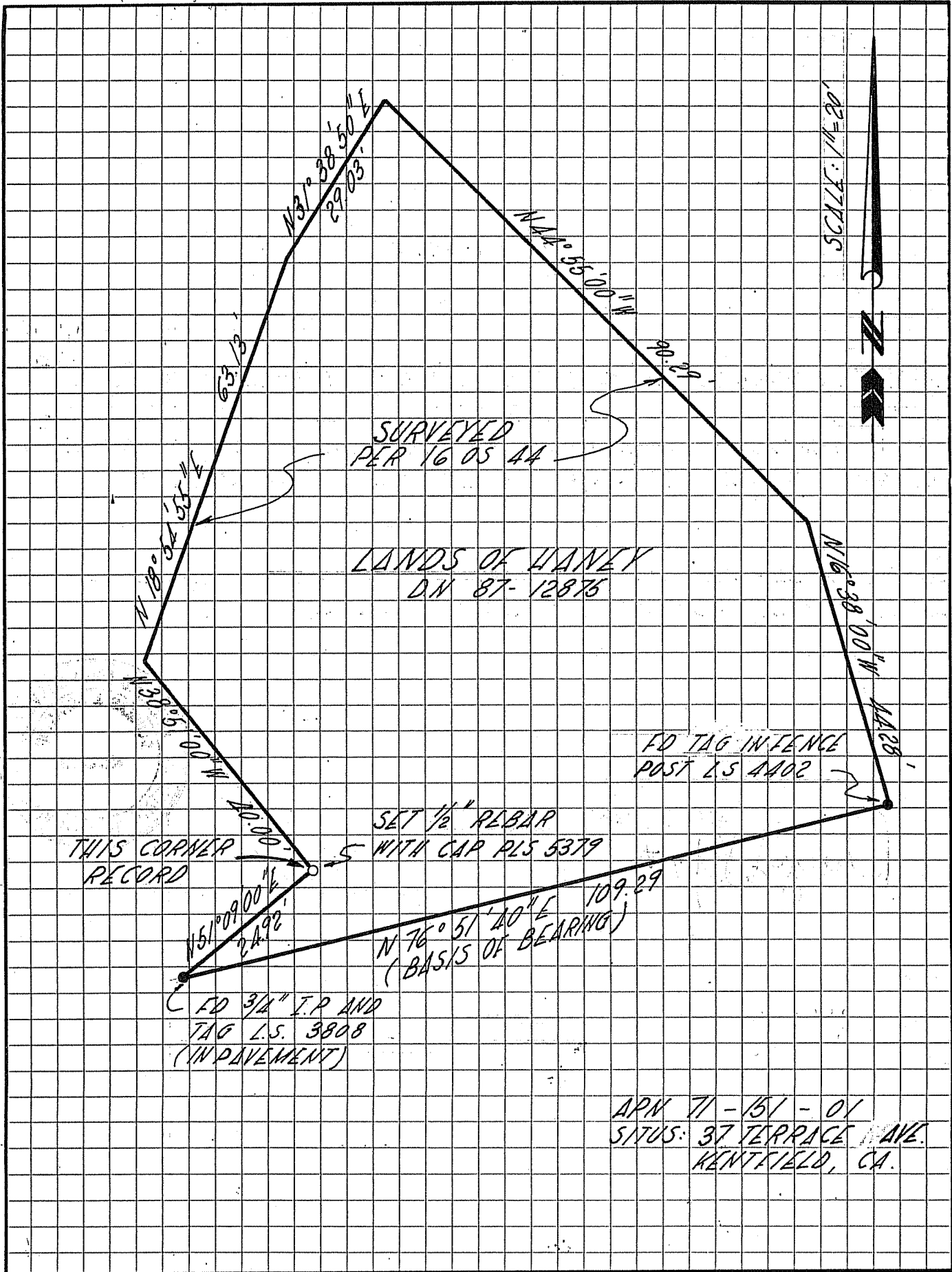


County Surveyor's Comment _____

PREPARED BY D.J. SCRANTON SURVEYING NOVATO, CA.

JN 9654

JN 9654



SURVEYED
PER 16 05 44

LANDS OF HANEY
D.N 87-12875

FD TAG INFENCE
POST LS 4402

THIS CORNER
RECORD

SET 1/2" REBAR
S WITH CAP PLS 5379

FD 3/4" I.P AND
TAG L.S. 3808
(IN PAVEMENT)

N 76° 51' 20" E 109.29
(BASIS OF BEARING)

APR 71-151-01
SITUS: 37 TERRACE AVE.
KENTFIELD, CA.