

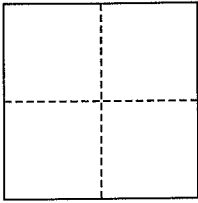
**CORNER RECORD**

City of Kentfield

Document Number AP# 071-132-27

County of Marin, California

Brief Legal Description A portion of Lot F, 1 RM 127



**CORNER TYPE**

Government Corner  Control   
 Meander  Property   
 Rancho  Other   
 Date of Survey \_\_\_\_\_

**COORDINATES (Optional)**

N. \_\_\_\_\_  
 E. \_\_\_\_\_  
 Zone \_\_\_\_\_ NAD27  NAD83   
 NAD83 Epoch \_\_\_\_\_  
 Elev. \_\_\_\_\_  
 Vert. Datum: NGVD29  NAVD88   
 Meas. Units: Metric  Imperial

**Corner-** Left as found  Found and tagged  Established  Reestablished  Rebuilt

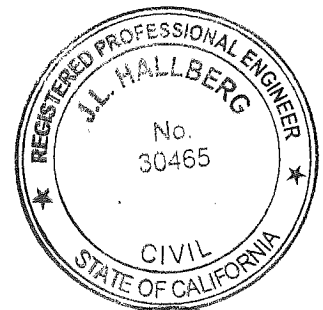
Identification and type of corner found: Evidence used to identify or procedure used to establish or reestablish the corner:  
Found Standard Street Monuments, per 1998 RS 21.

A description of the physical condition of the monument as found and as set or reset: All Property Corners and Property Line points were set as shown hereon, per 1998 RS 21.

**SURVEYOR'S STATEMENT**

This corner Record was prepared by me or under my direction in conformance with the Land Surveyor's Act on January 28, 2014

Signed [Signature] P.L.S. or R.C.E. No. 30465



**COUNTY SURVEYOR'S STATEMENT**

This Corner Record was received FEB. 06, 2014

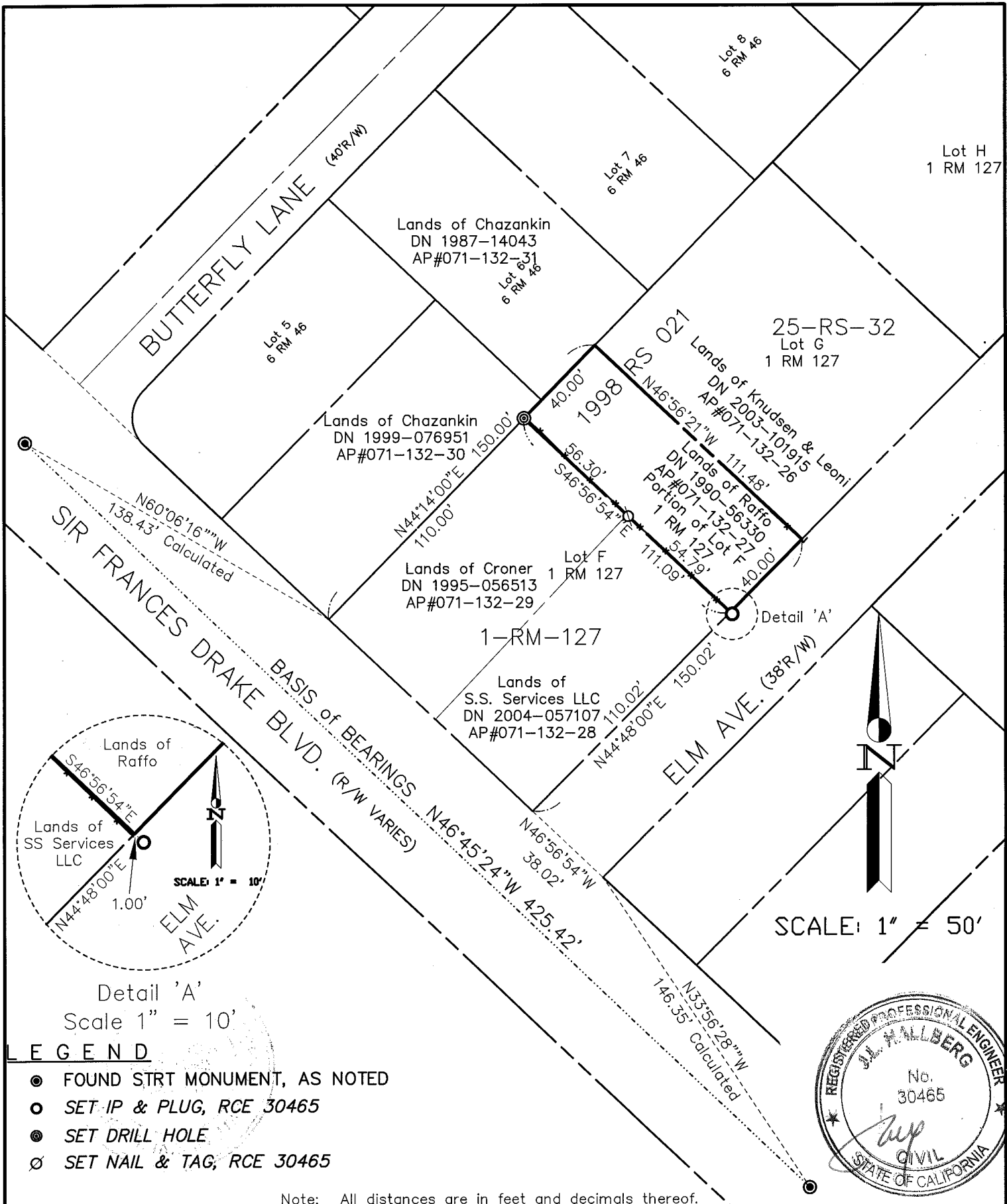
and examined and filed MARCH 4<sup>TH</sup> 2014

Signed [Signature] P.L.S. or R.C.E. No. 7821

Title DEPUTY



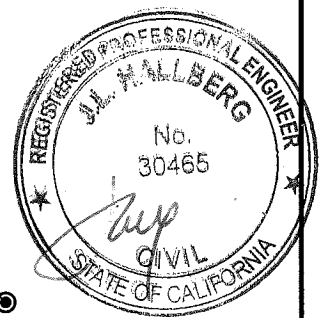
**County Surveyor's Comment** \_\_\_\_\_



**LEGEND**

- FOUND STRT MONUMENT, AS NOTED
- SET-IP & PLUG, RCE 30465
- ⊙ SET DRILL HOLE
- ∅ SET NAIL & TAG, RCE 30465

Note: All distances are in feet and decimals thereof.



SHEET	1	OF	1
SCALE:	1" = 50'	DESIGN:	XXX
DATE:	Jan 2014	DRAWN:	E.D.L.
FILE:	2013-113	CHECKED:	J.L.H.

**J.L. ENGINEERING**  
 CIVIL ENGINEERS-LAND SURVEYORS  
 1539 4th ST., SAN RAFAEL, CA. 94901 (415) 457-6647

**Corner Record**  
 Lands of Raffo - 5 Elm Ave.  
 APN 071-132-27, Kentfield, Marin County, CA