

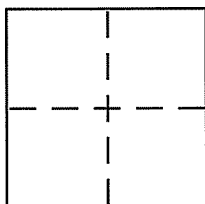
CORNER RECORD

Document Number APN 071-122-02+03

City of KENTFIELD

County of MARIN, California

Brief Legal Description RECORD OF SURVEY 2006 MAPS 40, MCR



CORNER TYPE

Government Corner Control
Meander Property
Rancho Other
Date of Survey MARCH 2011

COORDINATES (Optional)

N. _____
E. _____
Zone _____ NAD27 NAD83
NAD83 Epoch _____
Elev. _____
Vert. Datum: NGVD29 NAVD88
Meas. Units: Metric Imperial

Corner - Left as found Found and tagged Established Reestablished Rebuilt

Identification and type of corner found: Evidence used to identify or procedure used to establish or reestablish the corner:

SEE PAGE 2

A description of the physical condition of the monument as found and as set or reset:

SEE PAGE 2

SURVEYOR'S STATEMENT

This Corner Record was prepared by me or under my direction in conformance with the Land Surveyor's Act on MAY 5 2011

Signed [Signature] P.L.S or R.C.E. No. 7950



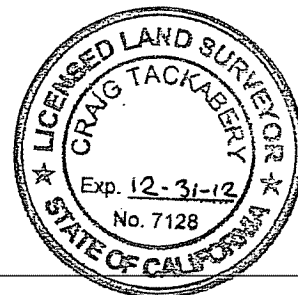
COUNTY SURVEYOR'S STATEMENT

This Corner Record was received MAY 9, 2011

and examined and filed MAY 9, 2011

Signed [Signature] P.L.S or R.C.E. No. 7128

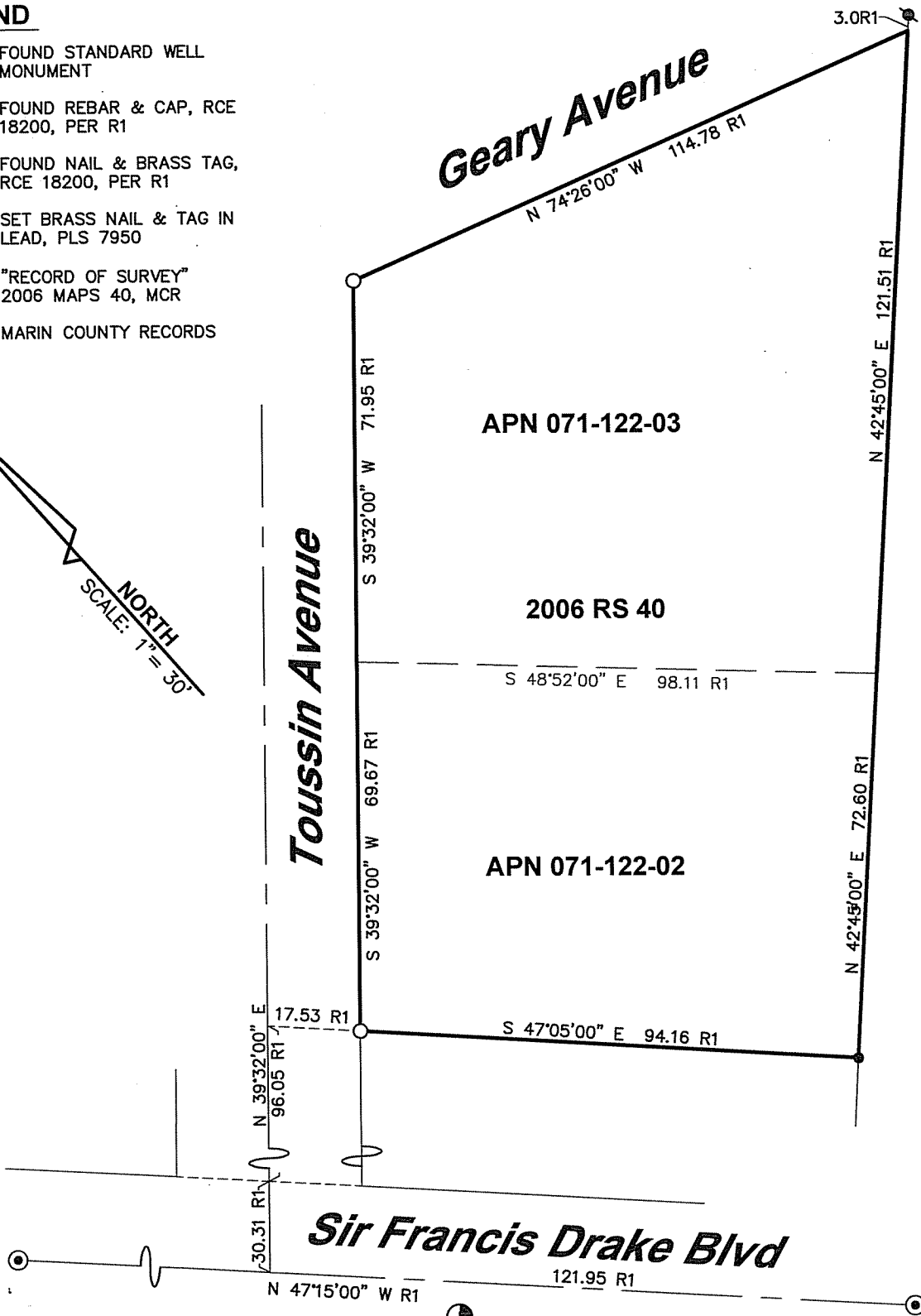
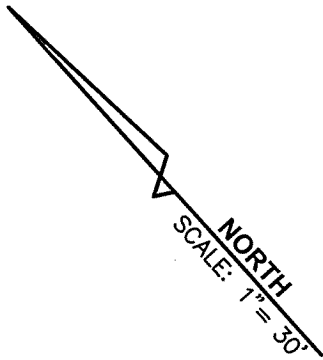
Title COUNTY SURVEYOR



County Surveyor's Comment _____

LEGEND

- ⊙ FOUND STANDARD WELL MONUMENT
- FOUND REBAR & CAP, RCE 18200, PER R1
- ⌘ FOUND NAIL & BRASS TAG, RCE 18200, PER R1
- SET BRASS NAIL & TAG IN LEAD, PLS 7950
- R1 "RECORD OF SURVEY" 2006 MAPS 40, MCR
- MCR MARIN COUNTY RECORDS



STEVEN J. LAFRANCHI & ASSOCIATES, INC.
CIVIL ENGINEERS ~ LAND SURVEYORS ~ LAND PLANNERS

PETALUMA THEATRE SQUARE
 140 SECOND STREET, SUITE 312
 PETALUMA, CALIFORNIA 94952
 707-762-3122 FAX 707-762-3239