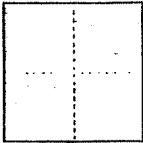


A.P. # 71-102-28

CORNER RECORD

COUNTY OF Marin T. R. MERIDIAN CALIFORNIA
CORNER TYPE GOVT. CORNER MEANDER RANCHO CONTROL OTHER A.P. No. 71-102-28
CORNER IDENTIFICATION - DATE OF VISIT 17 April, 1980



Westerly corner of 17 PM 80

CORNER -- LEFT AS FOUND FOUND AND TAGGED REESTABLISHED OBLITERATED CORNER REBUILT set

PHYSICAL DESCRIPTION OF CORNER FOUND; EVIDENCE AND METHOD USED TO IDENTIFY OR REESTABLISH

Set 1/2" iron pipe and tag, L.S. 4206 at the Westerly corner of Parcel 1 as shown on that parcel Map filed in Book 17 of Parcel Maps at page 80, Marin County Records.

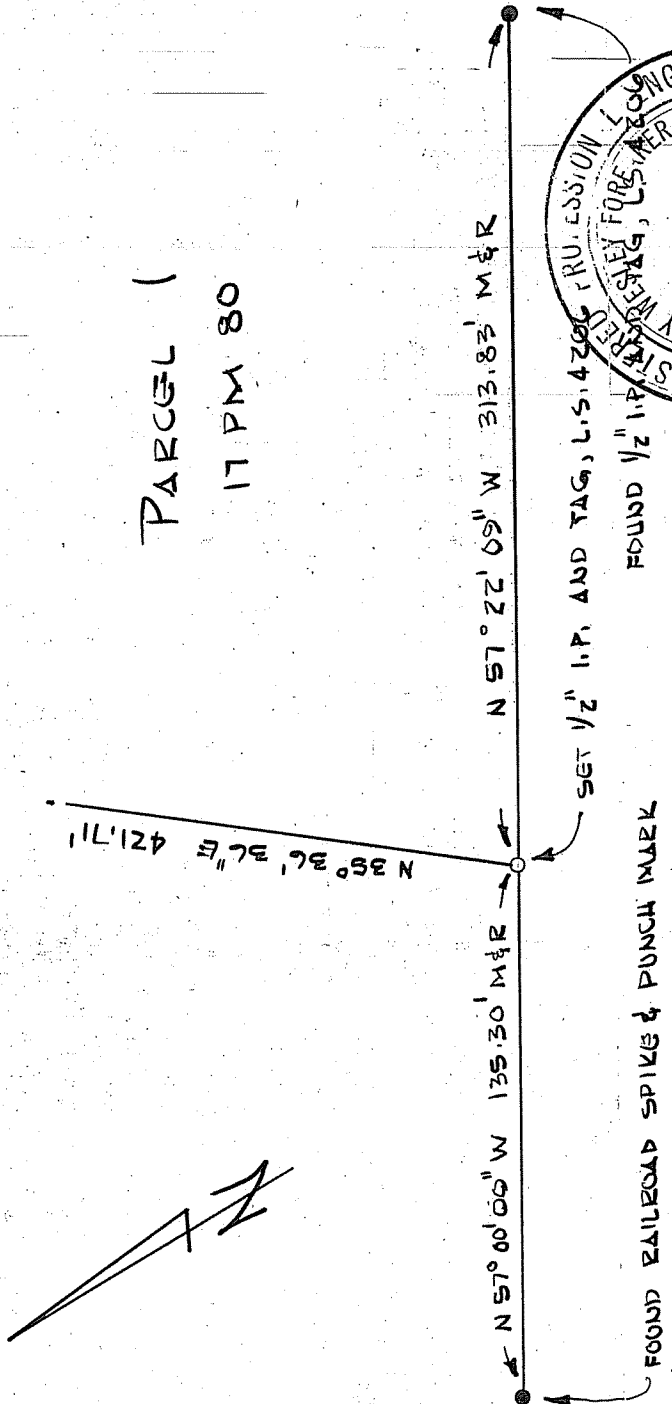
PHYSICAL DESCRIPTION OF MONUMENTS REBUILT OR PERPETUATED

As shown hereon.

CALIFORNIA COORDINATE SYSTEM ORDER: FIRST SECOND THIRD
STATIONS USED: NGS (USC & GS) COUNTY OTHER STATION
ZONE ELEVATION NORTHINGS (Y) EASTINGS (X)

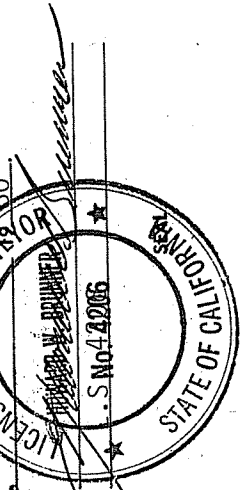
(Fold)

SKETCH: (Include reference tie or witness points, remarks and topo of area)

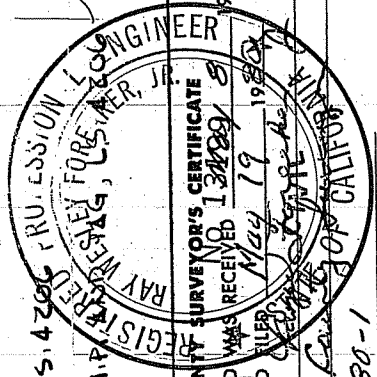


SURVEYOR'S CERTIFICATE

THIS CORNER RECORD WAS PREPARED BY ME OR UNDER MY DIRECTION IN CONFORMANCE WITH THE SURVEYORS ACT ON 30 April, 1980



SIGNED: [Signature]
L.S. or R.C.E. No.: S.No. 4206



COUNTY SURVEYOR'S CERTIFICATE
THE CORNER RECORD WAS RECEIVED 13 APR 80 AND EXAMINED AND FOUND TRUE BY: [Signature] TITLE: CLERK
DOCUMENT No. 80-1
STATEMENT ON BACK OF SHEET YES NO