

CORNER RECORD

DPW# 19-057

Agency Index

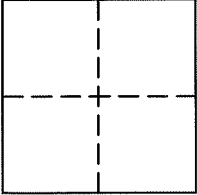
APN 071-091-35

Document Number

City of San Rafael GREENBRAE

County of Marin, California

Brief Legal Description Parcel 1, 24 Parcel Maps 89, M.C.R.



CORNER TYPE

- Government Corner Control
- Meander Property
- Rancho Other

Date of Survey AUGUST, 2012

COORDINATES (Optional)

- N. _____ E. _____
- Elevation _____
- Units Metric U.S. Survey Foot
- Horizontal Datum _____
- Zone _____ Epoch Date _____
- Vertical Datum _____
- Complies with Public Resources Code §§8801-8819
- Complies with Public Resources Code §§8890-8902

PLS Act Ref: 8765(d) 8771 8773 Other:

Corner/Monument: Left as found Established Rebuilt Pre-Construction
 Found and tagged Reestablished Referenced Post-Construction

Narrative of corner identified and monument as found, set, reset, replaced, or removed:

See sheet #2 for description (s):

Found exist monuments on per 24 P.M. 89, set points on west line Parcel 1, see Sheet 2.

Note: This Corner Record is being filed to record the monuments that were set in August 2012. A corner record was inadvertently not filed at the time the survey was completed.

SURVEYOR'S STATEMENT

This Corner Record was prepared by me or under my direction in conformance with the Professional Land Surveyors' Act on May 31, 2019

Signed Michael E. Ford P.L.S. or R.C.E. No. 7237



COUNTY SURVEYOR'S STATEMENT

This Corner Record was received JUNE 6, 2019

and examined and filed Aug. 20, 2019

Signed [Signature] P.L.S. or R.C.E. No. 9292

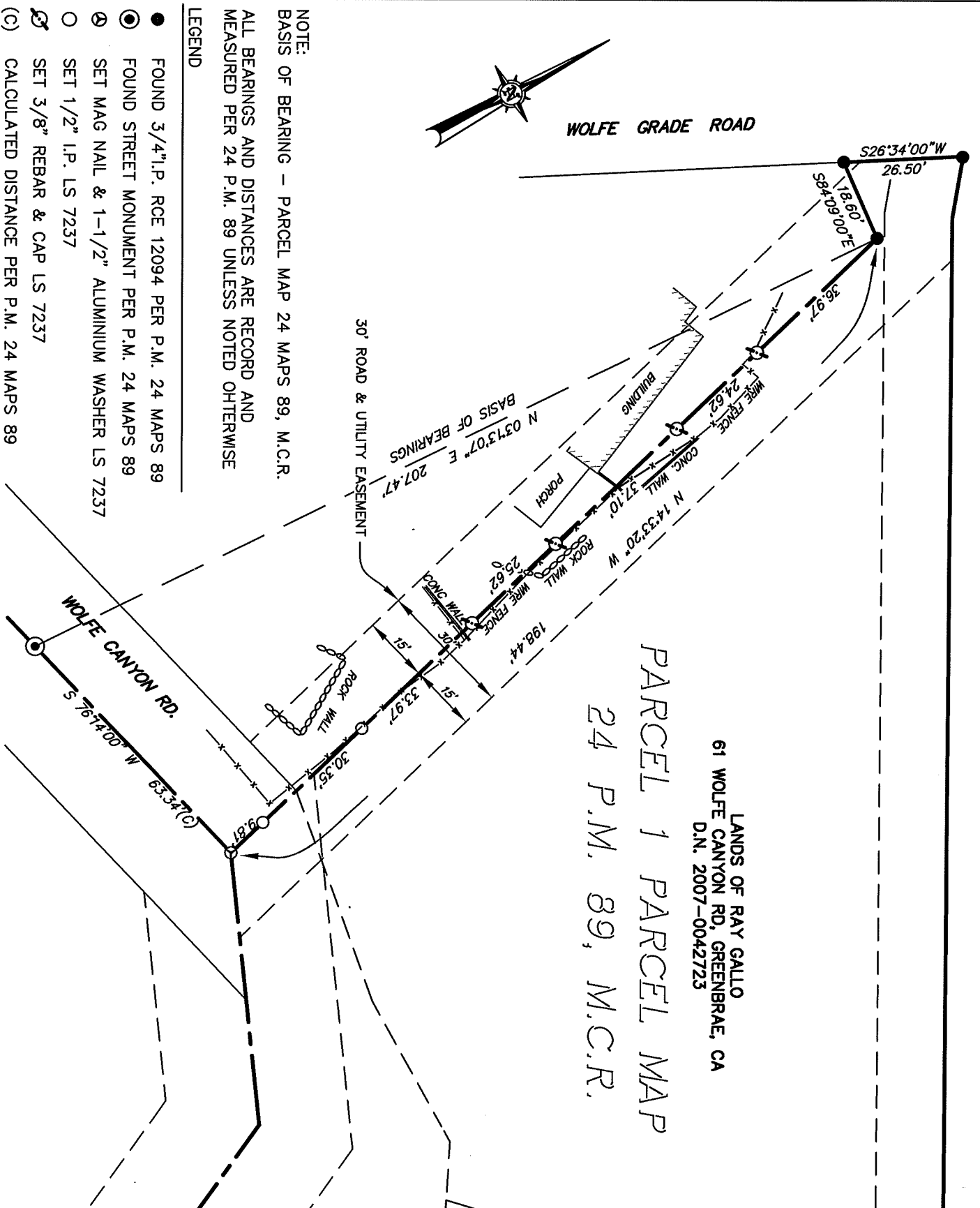
Title DEPUTY C.S.



County Surveyor's Comment _____



WOLFE GRADE ROAD



**BOUNDARY RETRACEMENT SURVEY
RAY GALLO - 61 WOLFE CANYON RD.
GREENBREA, CA
PARCEL 1, 24 P.M. 89, M.C.R.**

michael
LAND SURVEYING

8910 sonoma hwy suite 12b
po box 1243, kennedy, ca 95452
p 707.833.6468 • f 707.833.5744
www.michaelfordinc.com

NOTE:
BASIS OF BEARING - PARCEL MAP 24 MAPS 89, M.C.R.
ALL BEARINGS AND DISTANCES ARE RECORD AND
MEASURED PER 24 P.M. 89 UNLESS NOTED OTHERWISE

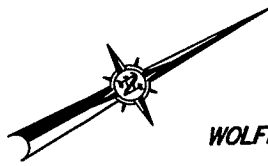
- LEGEND
- FOUND 3/4" I.P. RCE 12094 PER P.M. 24 MAPS 89
 - FOUND STREET MONUMENT PER P.M. 24 MAPS 89
 - ⊗ SET MAG NAIL & 1-1/2" ALUMINIUM WASHER LS 7237
 - SET 1/2" I.P. LS 7237
 - ⊗ SET 3/8" REBAR & CAP LS 7237
 - (C) CALCULATED DISTANCE PER P.M. 24 MAPS 89

SCALE 1" = 30'

DATE: 8/27/2012

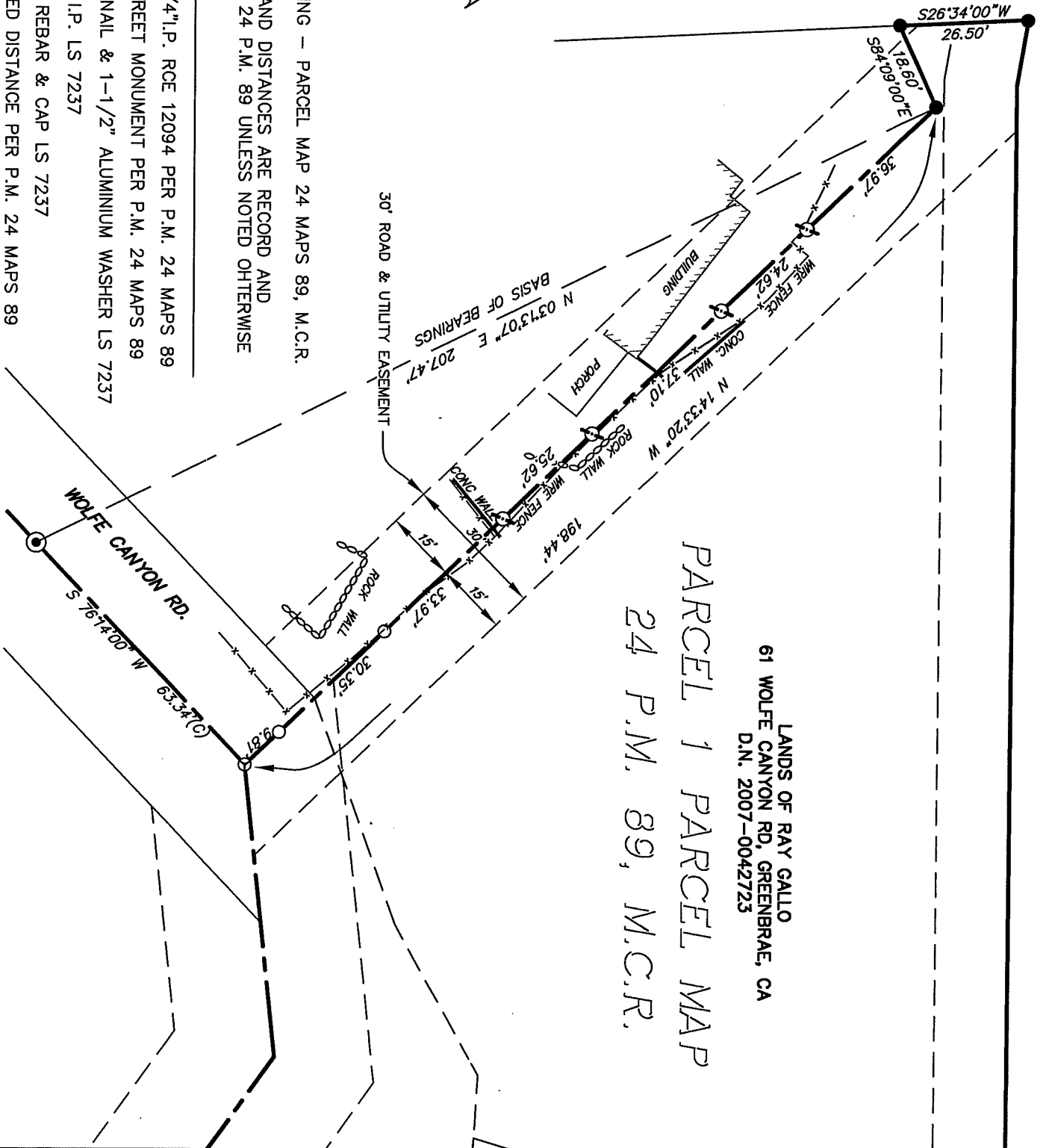
JOB #071649

1492-TP.dwg



WOLFE GRADE ROAD

- NOTE:
BASIS OF BEARING - PARCEL MAP 24 MAPS 89, M.C.R.
ALL BEARINGS AND DISTANCES ARE RECORD AND MEASURED PER 24 P.M. 89 UNLESS NOTED OTHERWISE
- LEGEND
- FOUND 3/4" I.P. RCE 12094 PER P.M. 24 MAPS 89
 - FOUND STREET MONUMENT PER P.M. 24 MAPS 89
 - ⊗ SET MAG NAIL & 1-1/2" ALUMINIUM WASHER LS 7237
 - SET 1/2" I.P. LS 7237
 - ⊗ SET 3/8" REBAR & CAP LS 7237
 - (C) CALCULATED DISTANCE PER P.M. 24 MAPS 89



**BOUNDARY RETRACEMENT SURVEY
RAY GALLO - 61 WOLFE CANYON RD.
GREENBREA, CA
PARCEL 1, 24 P.M. 89, M.C.R.**

michael
land
surveying

8910 sonoma hwy suite 12b
po box 1243, kennel, ca 95452
p 707.833.6468 • f 707.833.5744
www.michaelland.com

SCALE 1" = 30'
DATE: 8/27/2012
JOB #071649
1492-TP.dwg