

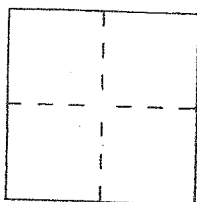
CORNER RECORD

Document Number 071-081-21 & 22

City of Kentfield

County of Marin, California

Brief Legal Description Parcels One & Two of 2 PM 65



CORNER TYPE

- Government Corner
- Meander
- Rancho
- Date of Survey _____
- Control
- Property
- Other

COORDINATES (Optional)

N. _____
 E. _____
 Zone _____ Datum _____
 Elev. _____

Corner — Left as found Found and tagged Established Reestablished Rebuilt

Identification and type of corner found: Evidence used to identify or procedure used to establish or reestablish the corner:

Found 3/4" Iron Pipe @ NE Corner Parcel One
and found old Hub at NW'ly line of Parcel Two

A description of the physical condition of the monument as found and as set or reset:

Found and set points as shown on "Sketch Map"
(over)

SURVEYOR'S STATEMENT

This Corner Record was prepared by me or under my direction in conformance with the Land Surveyors' Act on 10/27/2014

Signed David Harp L.S. or R.C.E. Number LS 5290



COUNTY SURVEYOR'S STATEMENT

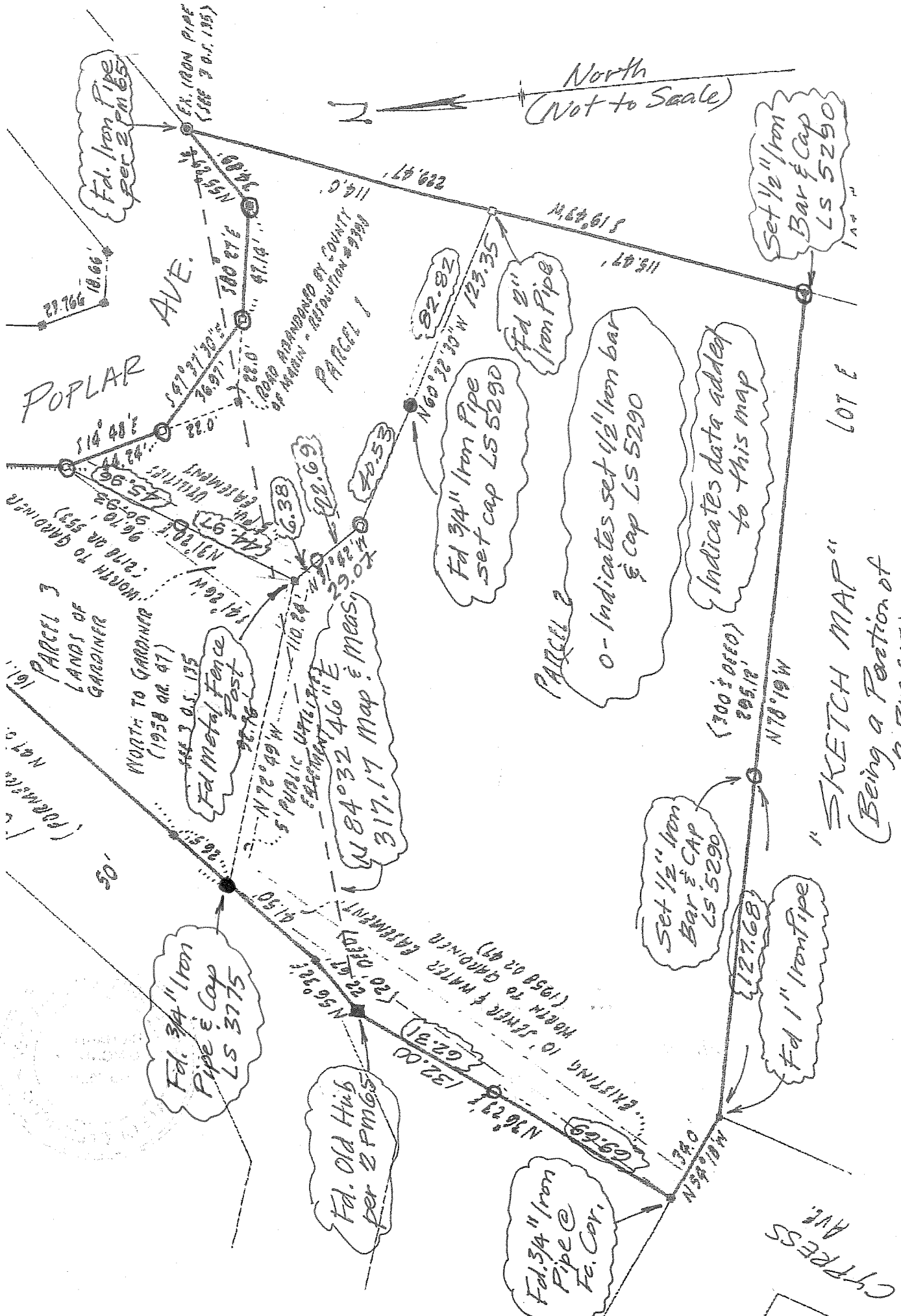
This Corner Record was received 12/15/2014 and examined

and filed DECEMBER 15, 2014

Signed Richard G. Simonitch Title DEPUTY



County Surveyor's Comment _____



North
(Not to Scale)

POPLAR AVE.

Set 1/2" Iron Bar & Cap LS 5290

Fd 3/4" Iron Pipe - set cap LS 5290

0 - Indicates set 1/2" Iron bar & Cap LS 5290

Indicates data added to this map

"SKETCH MAP"
(Being a Portion of 2 P.M.G.S)

PARCEL 3
LANDS OF GARDNER

Fd Metal Fence Post

317.17 Map & Meas.

Fd. 3/4" Iron Pipe & Cap LS 3775

Fd. Old Hub per 2 P.M.G.S.

Fd. 3/4" Iron Pipe @ Fe. Cor.

Set 1/2" Iron Bar & Cap LS 5290

Fd 1" Iron Pipe

CYPRESS AVE.

WORTH TO GARDNER (1958 or 47)

ENTRANCE TO SEWER & WATER MAIN TO GARDNER (1958 or 47)

Fd. Iron Pipe per 2 P.M.G.S.

EX. IRON PIPE (SEE 2 O.S. 135)

ROAD ABANDONED BY COUNTY OF MAHON - RESOLUTION #9300

WORTH TO GARDNER (1970 or 53)

WORTH TO GARDNER (1958 or 47)

WORTH TO GARDNER (1958 or 47)

WORTH TO GARDNER (1958 or 47)

WORTH TO GARDNER (1958 or 47)

500 FT

114.00'

110.24'

120.00'

132.00'

134.00'

114.0'

110.24'

110.24'

120.00'

132.00'

134.00'

14.622

123.35

123.35

123.35

123.35

123.35

115.47'

115.47'

115.47'

115.47'

115.47'

115.47'

115.47'

115.47'

115.47'

115.47'

115.47'

115.47'

115.47'

115.47'

115.47'

115.47'

115.47'

115.47'

115.47'

115.47'

115.47'

115.47'

115.47'

115.47'

115.47'

115.47'

115.47'

115.47'

115.47'

115.47'