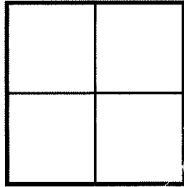


CORNER RECORD

Agency Index CR23-065
Document Number 071-072-11

City of KENTFIELD County of MARIN, California
Brief Legal Description 2003 M 189



CORNER TYPE

Government Corner Control
Meander Property
Rancho Other
Date of Survey 6/29/23

COORDINATES(Optional)

N. _____ E. _____
Elevation _____
Units Metric U.S. Survey Foot
Horizontal Datum _____
Zone _____ Epoch Date _____
Vertical Datum _____
 Complies with Public Resources Code §§8801-8819
 Complies with Public Resources Code §§8890-8902

PLS Act Ref.: 8765(d) 8771 8773 Other:
Corner/Monument: Left as found Established Rebuilt Pre-Construction
 Found and tagged Reestablished Referenced Post-Construction

Narrative of corner identified and monument as found, set, reset, replaced, or removed:
 See sheet #2 for description(s):

SURVEYOR'S STATEMENT

This Corner Record was prepared by me or under my direction in conformance with
the Professional Land Surveyors' Act on 7/27/23

Signed Lawrence P. Doyle P.L.S. No. 4694



COUNTY SURVEYOR'S STATEMENT

This Corner Record was received August 1, 2023
and examined and filed August 7, 2023

Signed T. K. Park P.L.S. No. 8176

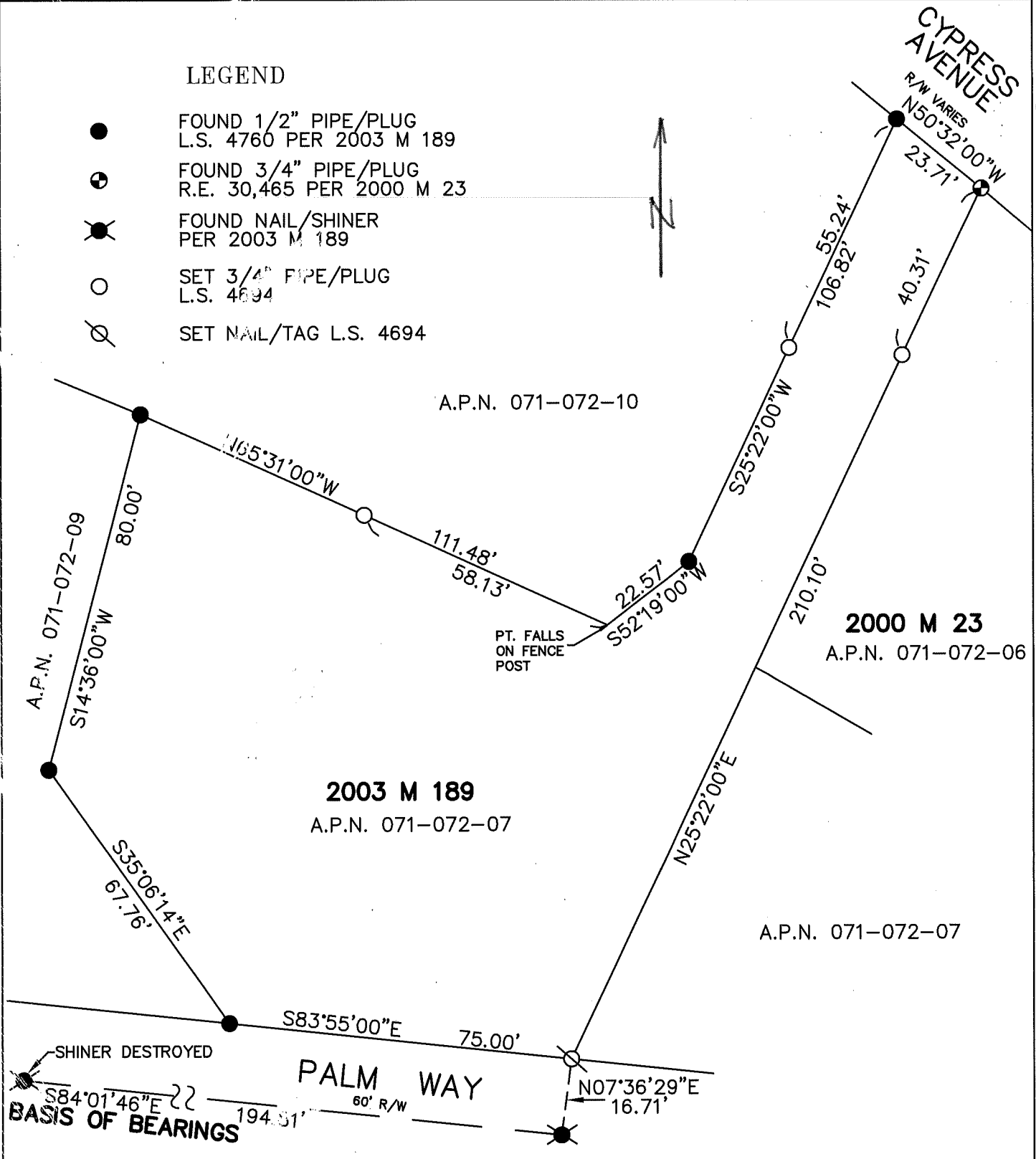
Title County Surveyor

County Surveyor's Comment



LEGEND

- FOUND 1/2" PIPE/PLUG
L.S. 4760 PER 2003 M 189
- ⊕ FOUND 3/4" PIPE/PLUG
R.E. 30,465 PER 2000 M 23
- ⊗ FOUND NAIL/SHINER
PER 2003 M 189
- SET 3/4" PIPE/PLUG
L.S. 4694
- ⊘ SET NAIL/TAG L.S. 4694



SHINER DESTROYED
BASIS OF BEARINGS

BASIS OF BEARINGS

THE BASIS OF BEARINGS FOR THIS SURVEY IS S84°01'46"E BETWEEN TWO FOUND NAILS ALONG PALM WAY AS SHOWN ON 2003 M 189



CORNER RECORD		
2003 M 189		
KENTFIELD	MARIN COUNTY	CALIFORNIA
SCALE: 1" = 30'	DATE: 7/26/23	DRAWN BY: LAWRENCE P. DOYLE
LAND SURVEYOR/CIVIL ENGINEER		SHEET 2 OF 2
100 HELENS LANE MILL VALLEY CA 94941 (415-388-9585)		DRAWING NO. 3054