

CORNER RECORD

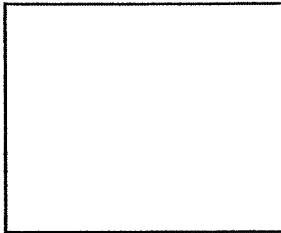
Document Number

City of

, County of Marin,

State of California

Brief Legal Description: APN 071-072-09, Document Number 2008-0020386



Corner Type

Coordinates (optional)

Government Corner Control

N.

Meander Property

E.

Rancho Other

Zone _____ Datum

Date of Survey October 09, 2008

Elev.

Corner - Left as found Found and tagged Established Reestablished Rebuilt

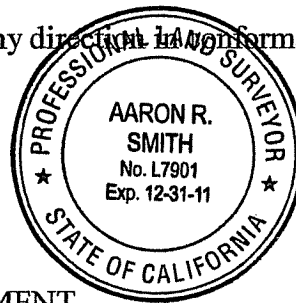
Identification and type of corner found; Evidence used to identify or procedure used to establish or re-establish the corner: Reset the corner of the calculated position of the original 2"x 2" hub established using a found P.K. Nail and Shiner, 17.68' southeasterly of the southeast corner and a found P.K. Nail and Shiner, 194.81' easterly of Parcel 3 as shown on that map titled "Record of Survey" filed in Book 37 of Surveys at Page 18, Marin County Records.

A description of the physical condition of the monument as found and as set or reset:
No monument was found. Set 3/4" iron pipe tagged PLS 7901

SURVEYOR'S STATEMENT

This Corner Record was prepared by me or under my direction in accordance with the Land Surveyor's Act on October 09, 2008.

Signed Aaron R. Smith
Aaron R. Smith, PLS 7901,
my license expires 12/31/11



COUNTY SURVEYOR'S STATEMENT

This Corner Record was received SEPTEMBER 24, 2010 and examined and filed SEPTEMBER 28, 2010.

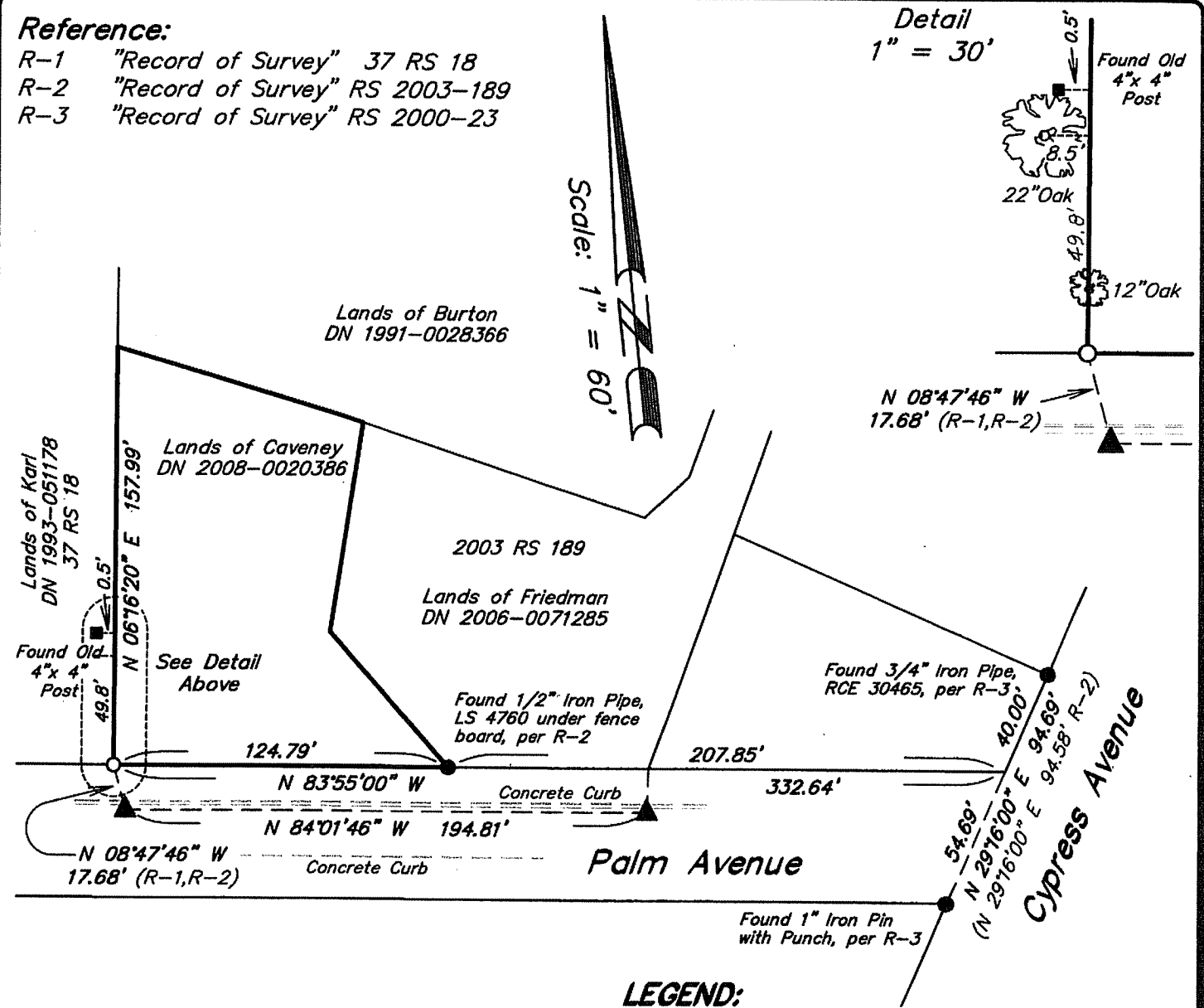
Signed [Signature] Title County Surveyor

County Surveyor's Comment:



Reference:

- R-1 "Record of Survey" 37 RS 18
- R-2 "Record of Survey" RS 2003-189
- R-3 "Record of Survey" RS 2000-23

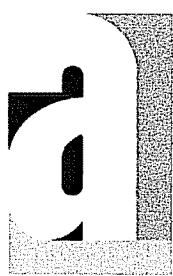
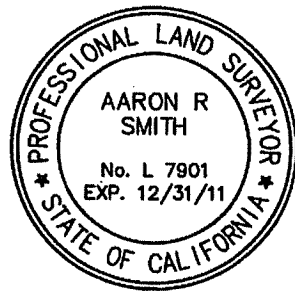


Note:
 Record of Survey 2003-189 found Cut-X-in concrete, this survey finds the original nail and shiners in the asphalt roadway at the same calculated location as the Cut-X's. Accepted as original per 37 RS 18.

- LEGEND:**
- Found Monument As Shown
 - ▲ Found P.K. Nail and Shiner 3.1' from face of curb, per R-2
 - Set 3/4" Iron Pipe tagged PLS 7901

Corner Record

Aaron R. Smith
 Aaron R. Smith, PLS 7901
 my license expires 12/31/11



<u>Adobe</u>	1220
<u>Associates, Inc.</u>	N. Dutton Ave
<u>Civil Engineering,</u>	Santa Rosa,
<u>Land Surveying &</u>	CA 95401
<u>Land Development</u>	707 541 2300
<u>Services</u>	Fax: 707 541 2301