

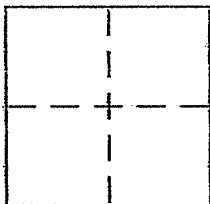
CORNER RECORD

Document Number 71-071-26

City of VICINITY OF KENTFIELD

County of MARIN, California

Brief Legal Description PARCEL ONE 5 PM 70



CORNER TYPE

Government Corner  Control   
Meander  Property   
Rancho  Other   
Date of Survey 9/26/2005

COORDINATES (Optional)

N. \_\_\_\_\_  
E. \_\_\_\_\_  
Zone \_\_\_\_\_ NAD27  NAD83   
NAD83 Epoch \_\_\_\_\_  
Elev. \_\_\_\_\_  
Vert. Datum: NGVD29  NAVD88   
Meas. Units: Metric  Imperial

Corner - Left as found  Found and tagged  Established  Reestablished  Rebuilt

Identification and type of corner found: Evidence used to identify or procedure used to establish or reestablish the corner:

RESET THE ANGLE POINT IN THE SOUTHERLY LINE OF  
PARCEL ONE (5 PM 70) PER THE SKETCH ON REVERSE SIDE.  
RESET POINT REPLACES DESTROYED CORNER POINT PER  
CORNER RECORD DONE BY THIS OFFICE EXAMINED &  
FILED ON 7/31/2002 FOR APN 71-071-26.

A description of the physical condition of the monument as found and as set or reset:

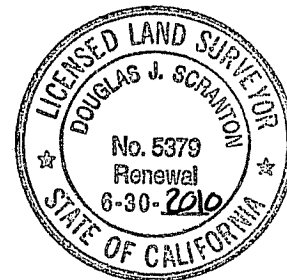
set 1/2" rebar w/ PLS CAP 5379 AFFIXED TO TOP  
& DRIVEN FLUSH TO SURROUNDING GRADE.

SURVEYOR'S STATEMENT

This Corner Record was prepared by me or under my direction in conformance with

the Land Surveyor's Act on JULY 21 2008

Signed Douglas J. Scranton P.L.S or R.C.E. No. PLS 5379



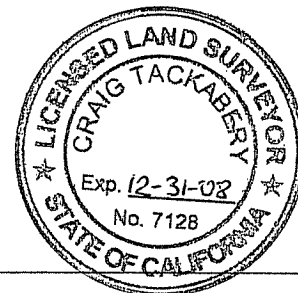
COUNTY SURVEYOR'S STATEMENT

This Corner Record was received JULY 23, 2008

and examined and filed JULY 23, 2008

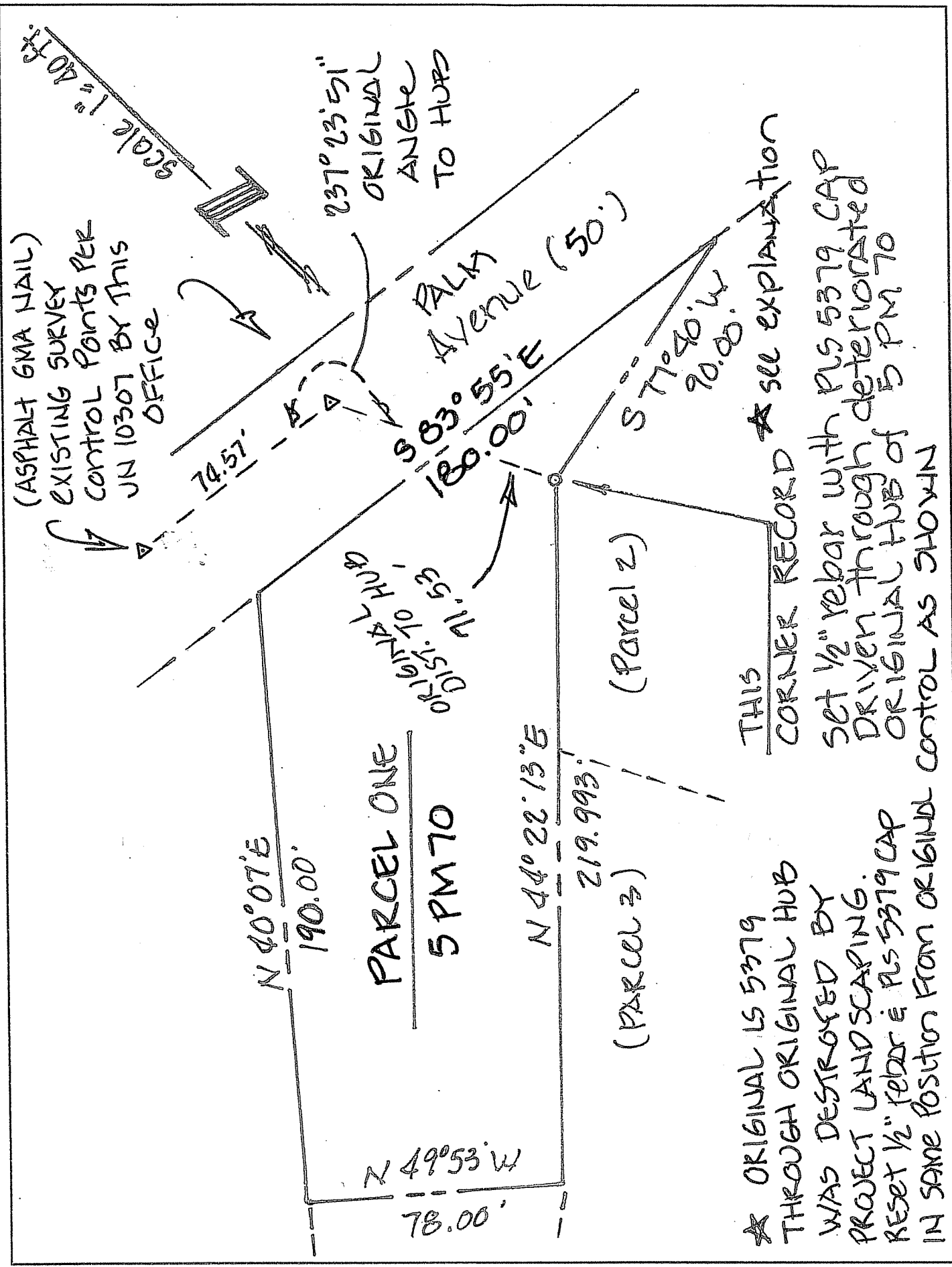
Signed \_\_\_\_\_ P.L.S or R.C.E. No. 7128

Title COUNTY SURVEYOR



County Surveyor's Comment \_\_\_\_\_

PREPARED BY  
DU SCRANTON SURVEYING  
NOVATO, CA



(ASPHALT GMA NAIL)  
 EXISTING SURVEY  
 CONTROL POINTS PER  
 JN 10307 BY THIS  
 OFFICE

237° 23' 51"  
 ORIGINAL  
 ANGLE  
 TO HUBS

FALK  
 Avenue (50')

DISTANCE TO HUB  
 115.53

PARCEL ONE  
 5 PM 70

(Parcel 2)

(Parcel 3)

THIS  
 CORNER RECORD ★ see explanation

set 1/2" rebar with PL 5379 CAP  
 DRIVEN THROUGH deteriorated  
 ORIGINAL HUB of 5 PM 70

★ ORIGINAL LS 5379  
 THROUGH ORIGINAL HUB  
 WAS DESTROYED BY  
 PROJECT LANDSCAPING.  
 RESET 1/2" REBAR & PL 5379 CAP  
 IN SAME POSITION FROM ORIGINAL CONTROL AS SHOWN