

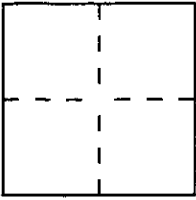
CORNER RECORD

Document Number APN 071-052-23

City of KENTFIELD

County of MARIN, California

Brief Legal Description LOT 5, AS SHOWN ON VOLUME 12 OF MAPS PG 63



CORNER TYPE

Government Corner  Control   
Meander  Property   
Rancho  Other   
Date of Survey 12/1/94

COORDINATES (Optional)

N. \_\_\_\_\_  
E. \_\_\_\_\_  
Zone \_\_\_\_\_ Datum \_\_\_\_\_  
Elev. \_\_\_\_\_

Corner — Left as found  Found and tagged  Established  Reestablished  Rebuilt

Identification and type of corner found: Evidence used to identify or procedure used to establish or reestablish the corner:  
Found subdivision street monuments. Used street monuments as a basis to set lot corners.

A description of the physical condition of the monument as found and as set or reset:  
Set 3/4" iron pipe with tag at lot corners. Tag RCE 12094

SURVEYOR'S STATEMENT

This Corner Record was prepared by me or under my direction in conformance with the Land Surveyors' Act on December 1 1994.

Signed [Signature] or R.C.E. Number 12094



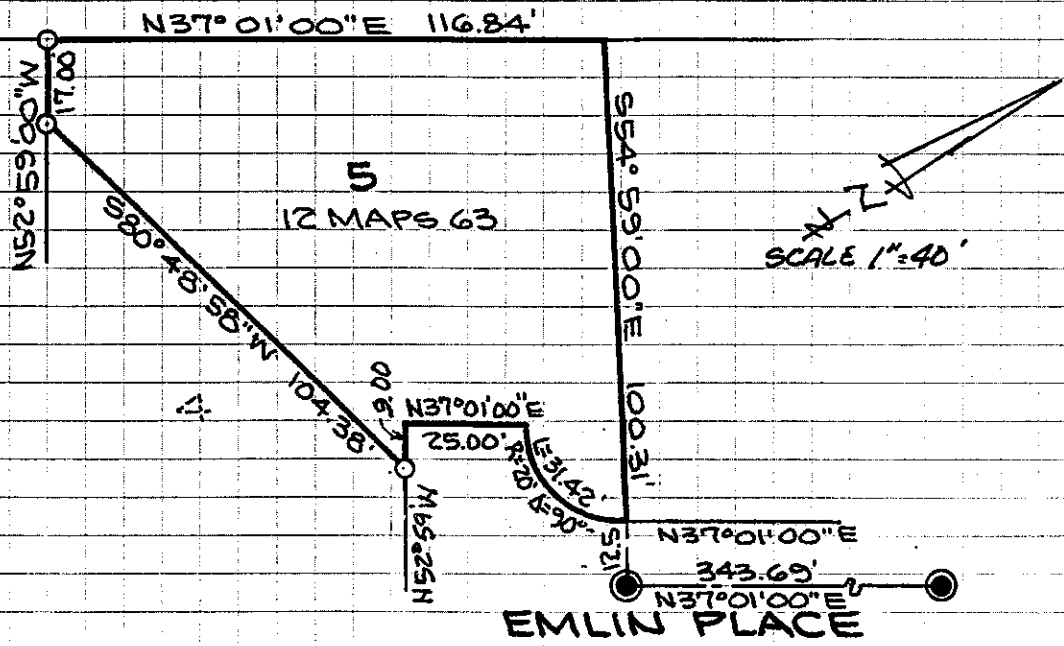
COUNTY SURVEYOR'S STATEMENT

This Corner Record was received APRIL 8 1999 and examined and filed APRIL 12 1999.

Signed [Signature] Title DEPUTY



County Surveyor's Comment \_\_\_\_\_



- FOUND STANDARD STREET MONUMENT
- SET 3/4" IRON PIPE RCE 12094

JOB 151-94