

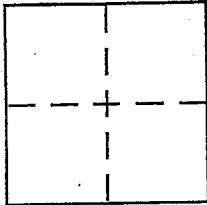
CORNER RECORD

Document Number APN 71-042-06

City of Vicinity of Kentfield

County of Marin, California

Brief Legal Description Controlling survey monuments referenced



CORNER TYPE

Government Corner Control
Meander Property
Rancho Other
Date of Survey Feb. 5, 2013

COORDINATES (Optional)

N. _____
E. _____
Zone _____ NAD27 NAD83
NAD83 Epoch _____
Elev. _____
Vert. Datum: NGVD29 NAVD88
Meas. Units: Metric Imperial

Corner - Left as found Found and tagged Established Reestablished Rebuilt

Identification and type of corner found: Evidence used to identify or procedure used to establish or reestablish the corner:
Prior to the repaving of Poplar Dr., this office has referenced the 2 railroad spikes shown on 7 P.M. 96, 21 05 30, and 2003 m 20.
- See back -

A description of the physical condition of the monument as found and as set or reset:
Railroad spikes are on the surface and in danger of being destroyed by planned repaving. Reference points will be used to replace them.

SURVEYOR'S STATEMENT

This Corner Record was prepared by me or under my direction in conformance with the Land Surveyor's Act on Feb 13 2013

Signed Michael G. Brogan P.L.S or R.C.E. No. LS 5767



COUNTY SURVEYOR'S STATEMENT

This Corner Record was received FEBRUARY 15, 2013

and examined and filed MARCH 28, 2013

Signed Richard G. Simonitch P.L.S or R.C.E. No. 7821

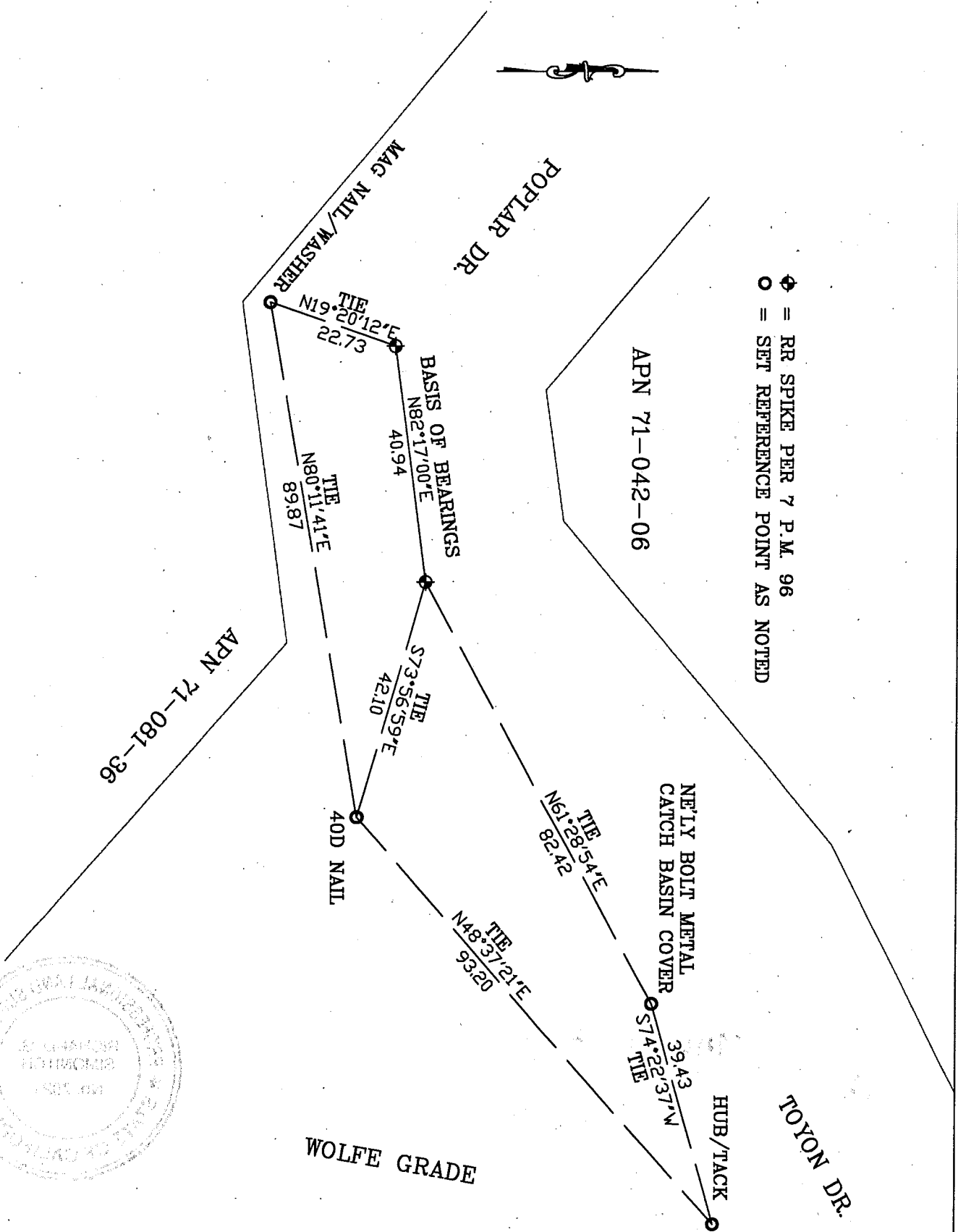
Title DEPUTY COUNTY SURVEYOR



County Surveyor's Comment _____



◆ = RR SPIKE PER 7 P.M. 96
 ○ = SET REFERENCE POINT AS NOTED



APN 71-081-36

APN 71-042-06

WOLFE GRADE

TOYON DR.

