

CORNER RECORD



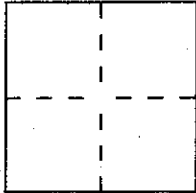
JERRICO ASSOCIATES  
SUITE 27  
77 MARK DRIVE  
SAN RAFAEL, CA 94903

7351

Document Number 71-022-05

City of Kentfield County of Marin, California

Brief Legal Description Lot 106, Amended map of Del Mesa 5 RM 69



CORNER TYPE

COORDINATES (Optional)

Government Corner  Control   
Meander  Property   
Rancho  Other   
Date of Survey April 28, 1999

N. \_\_\_\_\_  
E. \_\_\_\_\_  
Zone \_\_\_\_\_ Datum \_\_\_\_\_  
Elev. \_\_\_\_\_

Corner — Left as found  Found and tagged  Established  Reestablished  Rebuilt

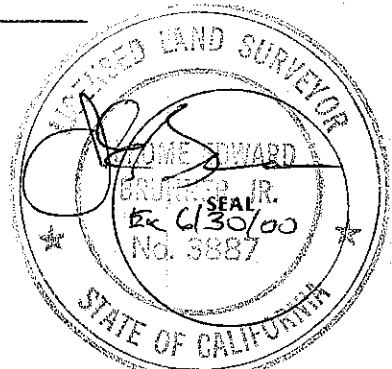
Identification and type of corner found: Evidence used to identify or procedure used to establish or reestablish the corner:  
(A) (B) Found old hubs shown in 24 OS 20 Set rebar  
and cap LS 3887 in it.

A description of the physical condition of the monument as found and as set or reset:  
(C) Set rebar and cap LS 3887 as reference 13.04 from corner.

SURVEYOR'S STATEMENT

This Corner Record was prepared by me or under my direction in conformance with the Land Surveyors' Act on April 28 19 99.

Signed [Signature] L.S. or R.C.E. Number LS 3887



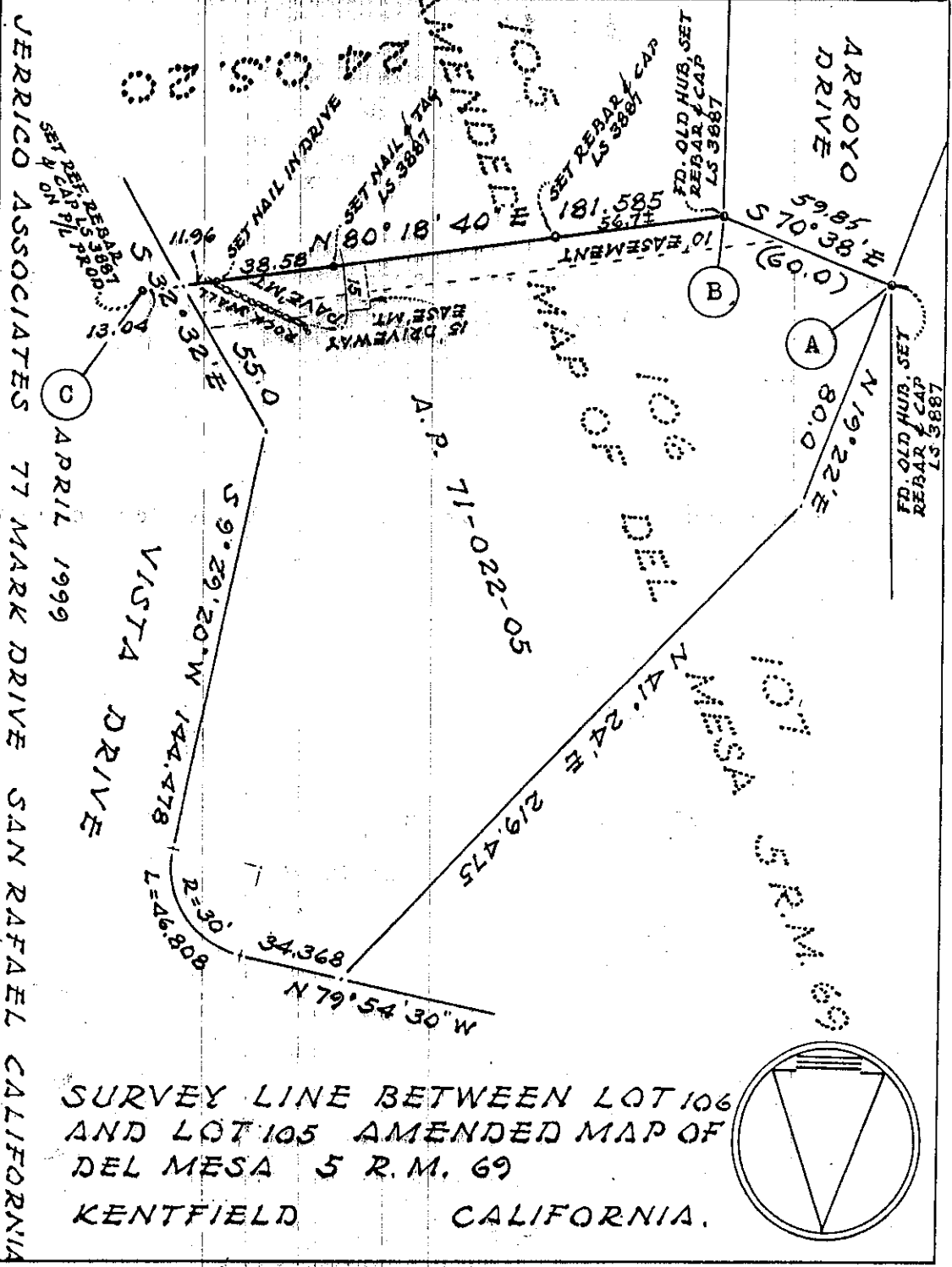
COUNTY SURVEYOR'S STATEMENT

This Corner Record was received MAY 5 19 99 and examined and filed MAY 6 19 99.

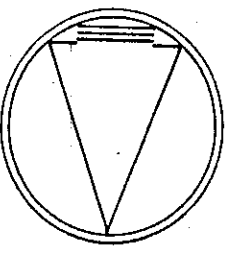
Signed [Signature] Title DEPUTY



County Surveyor's Comment



SURVEY LINE BETWEEN LOT 106  
 AND LOT 105 AMENDED MAP OF  
 DEL MESA 5 R.M. 69  
 KENTFIELD CALIFORNIA.



S-7351

JERRICO ASSOCIATES 77 MARK DRIVE SAN RAFAEL CALIFORNIA

APRIL 1999

A.P. 71-022-05

AMENDED MAP OF

DEL MESA

5 R.M. 69