

# CORNER RECORD

Document Number A.P.# 071-012-15

City of KENTFIELD

County of MARIN, California

Brief Legal Description PARCEL 1 4 P.M. 90

### CORNER TYPE

Government Corner  Control   
 Meander  Property   
 Rancho  Other   
 Date of Survey 9/30/02

### COORDINATES (Optional)

N. \_\_\_\_\_  
 E. \_\_\_\_\_  
 Zone \_\_\_\_\_ NAD27  NAD83   
 NAD83 Epoch \_\_\_\_\_  
 Elev \_\_\_\_\_  
 Vert. Datum: NGVD29  NAVD88   
 Meas. Units: Metric  Imperial

Corner- Left as found  Found and tagged  Established  Reestablished  Rebuilt

Identification and type of corner found: Evidence used to identify or procedure used to establish or reestablish the corner:  
ESTABLISHED PROPERTY CORNERS FROM FOUND CONCRETE NAILS AND PROPERTY CORNER AS SHOWN ON 4 P.M. 90

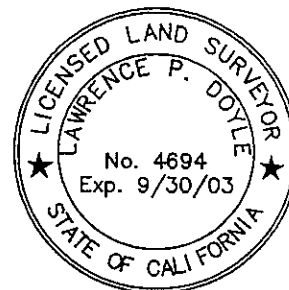
A description of the physical condition of the monument as found and as set or reset: SEE SHEET 2.

### SURVEYOR'S STATEMENT

This Corner Record was prepared by me or under my direction in conformance with

the Land Surveyor's Act on 10/1/02 2002

Signed Lawrence P Doyle P.L.S. or R.C.E. No. P.L.S. 4694



### COUNTY SURVEYOR'S STATEMENT

This Corner Record was received OCTOBER 3, 2002

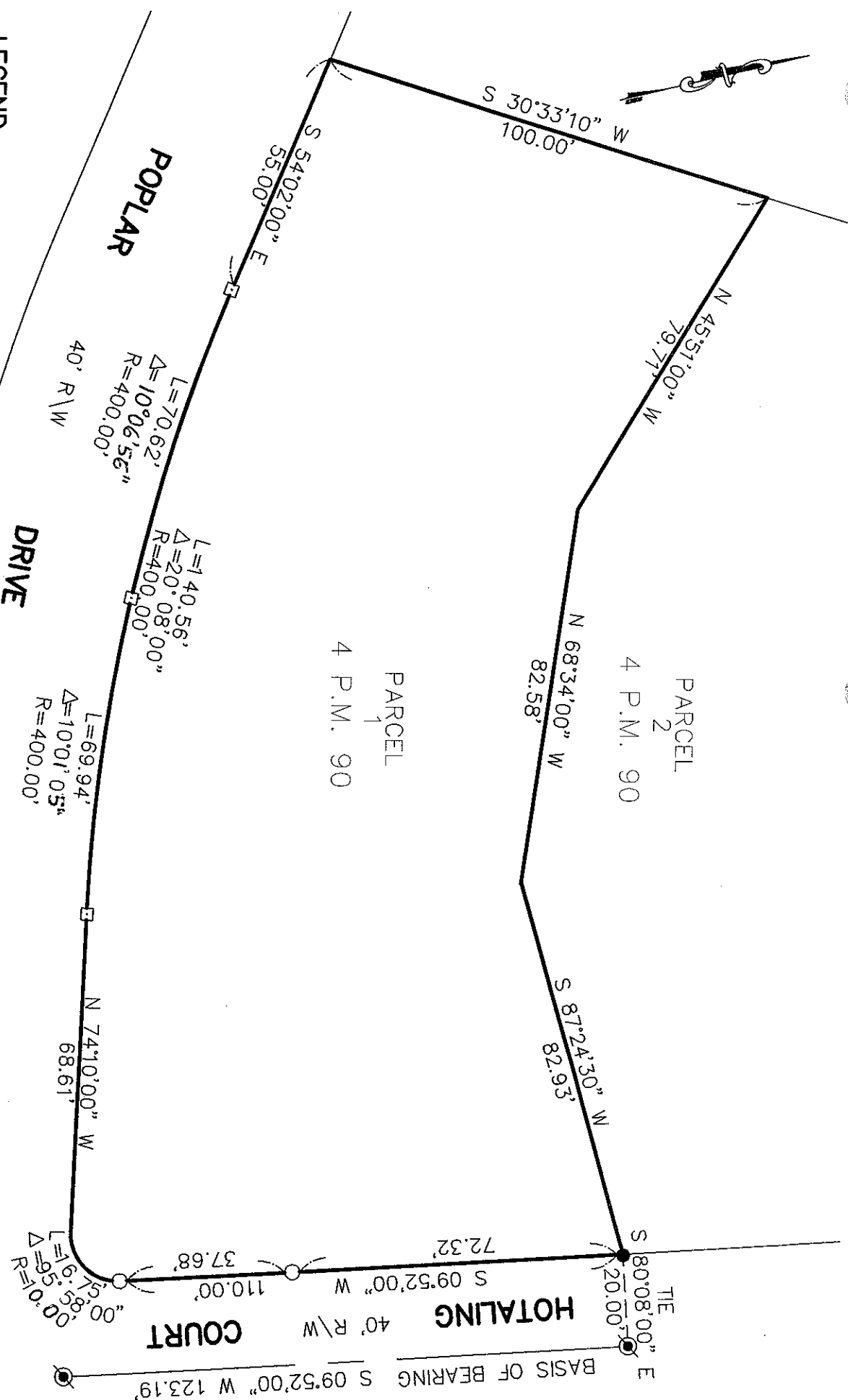
and examined and filed OCTOBER 9, 2002

Signed [Signature] P.L.S. or R.C.E. No. 7128

Title DEPUTY

County Surveyor's Comment \_\_\_\_\_





**LEGEND**

- FOUND NAIL (4 P.M. 90)
- FOUND 3/4" PIPE & TAG L.S. 2731
- SET 3/4" PIPE AND PLUG L.S. 4694
- SET HUB AND TAG L.S. 4694



<b>CORNER RECORD</b>	
PARCEL 1 MARIN COUNTY CALIFORNIA	
4 P.M. 90	
SCALE: 1" = 30'	DRAWN BY: AVB
DATE: 9/23/02	SHEET 2 OF 2
<b>LAWRENCE P. DOYLE</b>	
LAND SURVEYOR/CIVIL ENGINEER	
P.O. BOX 1609 MILL VALLEY CA 94942 (415-388-9585)	
DRAWING NO. 730-99	