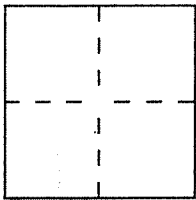


CORNER RECORD

Document Number AP No 70-362-02

City of LARKSPUR County of MARIN, California

Brief Legal Description LOT 1756 MAP OF GREENBRAE SUB No SIXTEEN 10 RM 106



CORNER TYPE

Government Corner Control
Meander Property
Rancho Other
Date of Survey 12/3/1997

COORDINATES
(Optional)

N. _____
E. _____
Zone _____ Datum _____
Elev. _____

Corner — Left as found Found and tagged Established Reestablished Rebuilt

Identification and type of corner found: Evidence used to identify or procedure used to establish or reestablish the corner:

SET CORNER MONUMENTS AND LINE POINTS USING RECORDED DIMENSIONS FROM FOUND ORIGINAL STREET MONUMENTS SHOWN ON 10 RM 106. (SEE SKETCH OF SURVEY, SHEET 2)

A description of the physical condition of the monument as found and as set or reset:

SET MONUMENTS ARE 1/2" IRON REBAR W/PLASTIC CAP STAMPED "LS6135" OR NAIL & BRASS TAG STAMPED "LS 6135"
FOUND STREET MONUMENTS ARE BRASS PIN SET IN CONCRETE
FOUND CORNER MONUMENTS ARE 3/4" IRON PIPE W/TAG STAMPED "RCE18221"

SURVEYOR'S STATEMENT

This Corner Record was prepared by me or under my direction in conformance with the Land Surveyors' Act on DECEMBER 9 1997.

Signed Richard F. Aispach L.S. or R.C.E. Number LS 6135



COUNTY SURVEYOR'S STATEMENT

This Corner Record was received DECEMBER 15 1997 and examined and filed DECEMBER 16 1997.

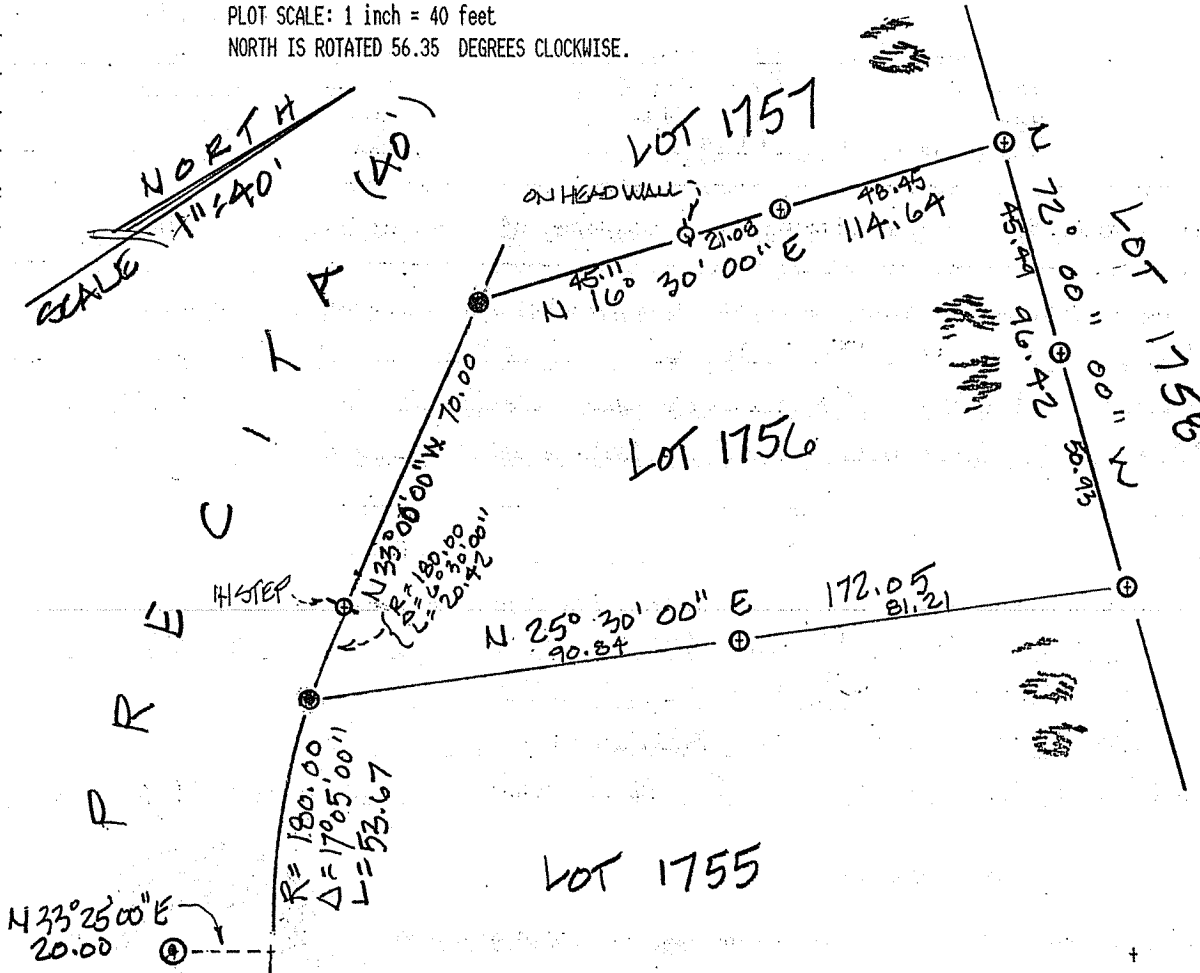
Signed John M. Wooley Title DEPUTY



County Surveyor's Comment _____

CC-PLOT output, date: 12-09-1997, time: 8:39:22 AM, FILE: TSA0283.CCC

PLOT SCALE: 1 inch = 40 feet
NORTH IS ROTATED 56.35 DEGREES CLOCKWISE.



C O R T E
BASIS OF BEARINGS
N 56° 35' 00" W 106.46

SURVEY

LOT 1756 GREENBRAE
SUB No SIXTEEN
10 RM 106

- SET 1/2" REBAR & CAP "LS 6135"
- SET NAIL & TAG "LS 6135"
- FOUND 3/4" IRON PIPE & TAG "RC 1822"
- FOUND STREET MONUMENT
PIH IN CONCRETE

POINTS OFF PAPER: NONE