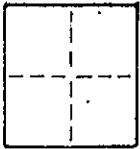


CORNER RECORD

COUNTY OF MARIN T. _____ R. _____ MERIDIAN _____ CALIFORNIA
CORNER TYPE: GOVT. CORNER MEANDER RANCHO CONTROL OTHER
CORNER IDENTIFICATION - DATE OF VISIT _____ 19____



CORNER - LEFT AS FOUND FOUND AND TAGGED REESTABLISHED OBLITERATED CORNER REBUILT

PHYSICAL DESCRIPTION OF CORNER FOUND; EVIDENCE AND METHOD USED TO IDENTIFY OR REESTABLISH

APN 70-352-07

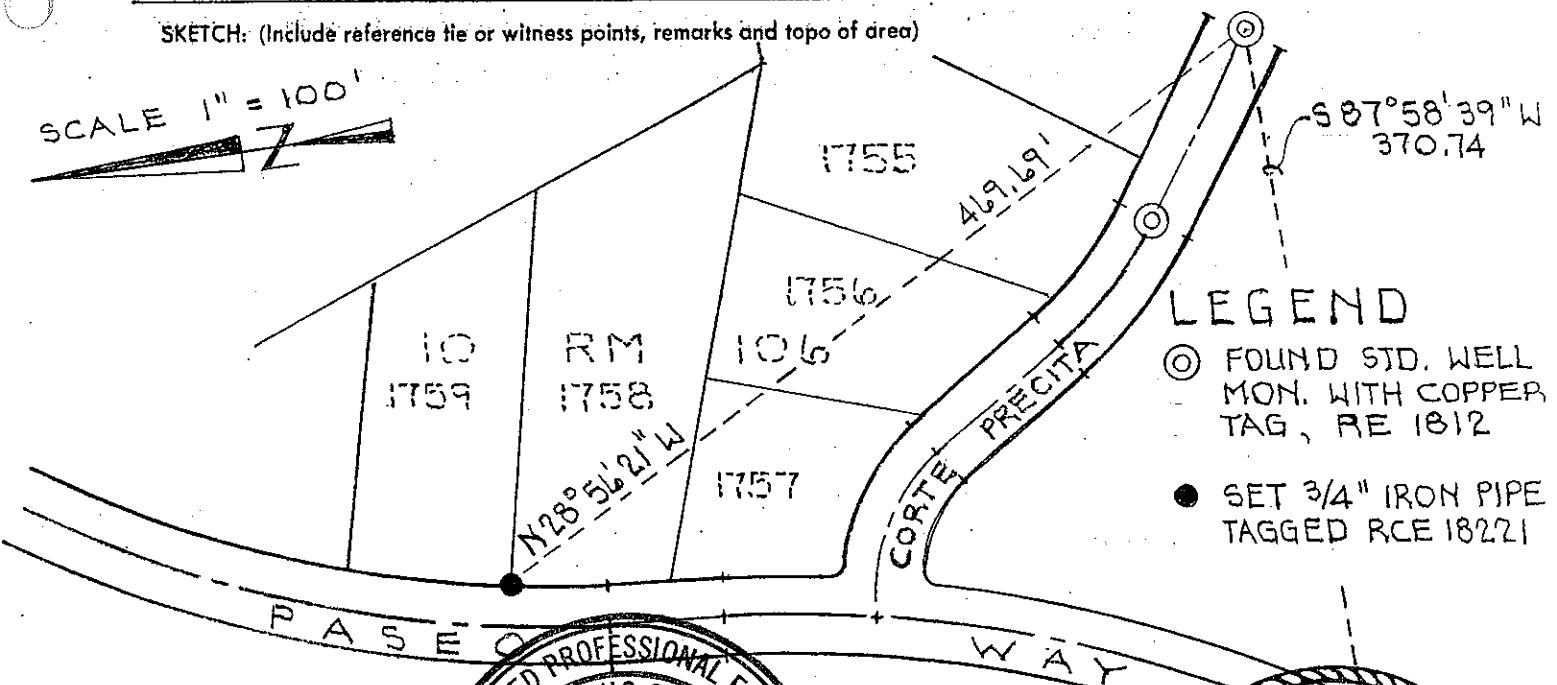
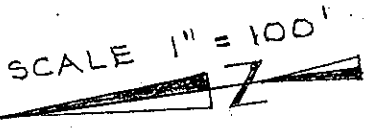
PHYSICAL DESCRIPTION OF MONUMENTS REBUILT OR PERPETUATED

SET 3/4" IRON PIPE TAGGED RCE 18221 FOR THE NORTH WEST CORNER OF LOT 1758 10 R.M. 106, MARIN COUNTY RECORDS

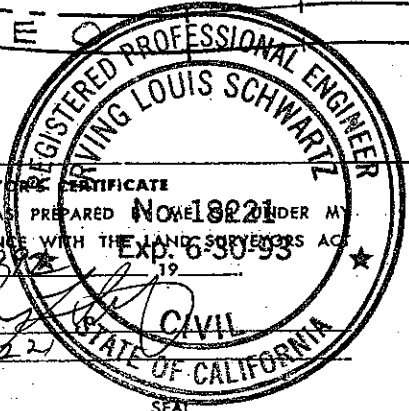
Larkspur

CALIFORNIA COORDINATE SYSTEM ORDER: FIRST SECOND THIRD
STATIONS USED: NGS (USC & GS) STATE COUNTY OTHER STATION _____ STATION _____
ZONE _____ ELEVATION _____ NORTHINGS (Y) _____ EASTINGS (X) _____

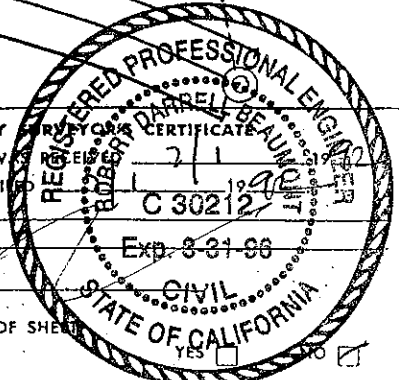
SKETCH: (Include reference tie or witness points, remarks and topo of area)



- LEGEND
- ⊙ FOUND STD. WELL MON. WITH COPPER TAG, RE 1812
 - SET 3/4" IRON PIPE TAGGED RCE 18221



SURVEYOR'S CERTIFICATE
THIS CORNER RECORD WAS PREPARED UNDER MY DIRECTION IN CONFORMANCE WITH THE LAND SURVEYORS ACT ON JUNE 29, 1992
SIGNED: _____
L.S. or R.C.E. No. C1822



COUNTY SURVEYOR'S CERTIFICATE
THE CORNER RECORD WAS RECEIVED AND EXAMINED AND FOUND TRUE BY: _____
TITLE: _____
DOCUMENT No. _____
STATEMENT ON BACK OF SHEET _____

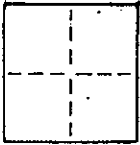
CORNER RECORD

2 OF 2

COUNTY OF MARIN T. _____ R. _____ MERIDIAN CALIFORNIA

CORNER TYPE: GOVT. CORNER MEANDER RANCHO CONTROL OTHER

CORNER IDENTIFICATION — DATE OF VISIT _____ 19____



CORNER — LEFT AS FOUND FOUND AND TAGGED REESTABLISHED OBLITERATED CORNER REBUILT

PHYSICAL DESCRIPTION OF CORNER FOUND; EVIDENCE AND METHOD USED TO IDENTIFY OR REESTABLISH

APN 70-352-07

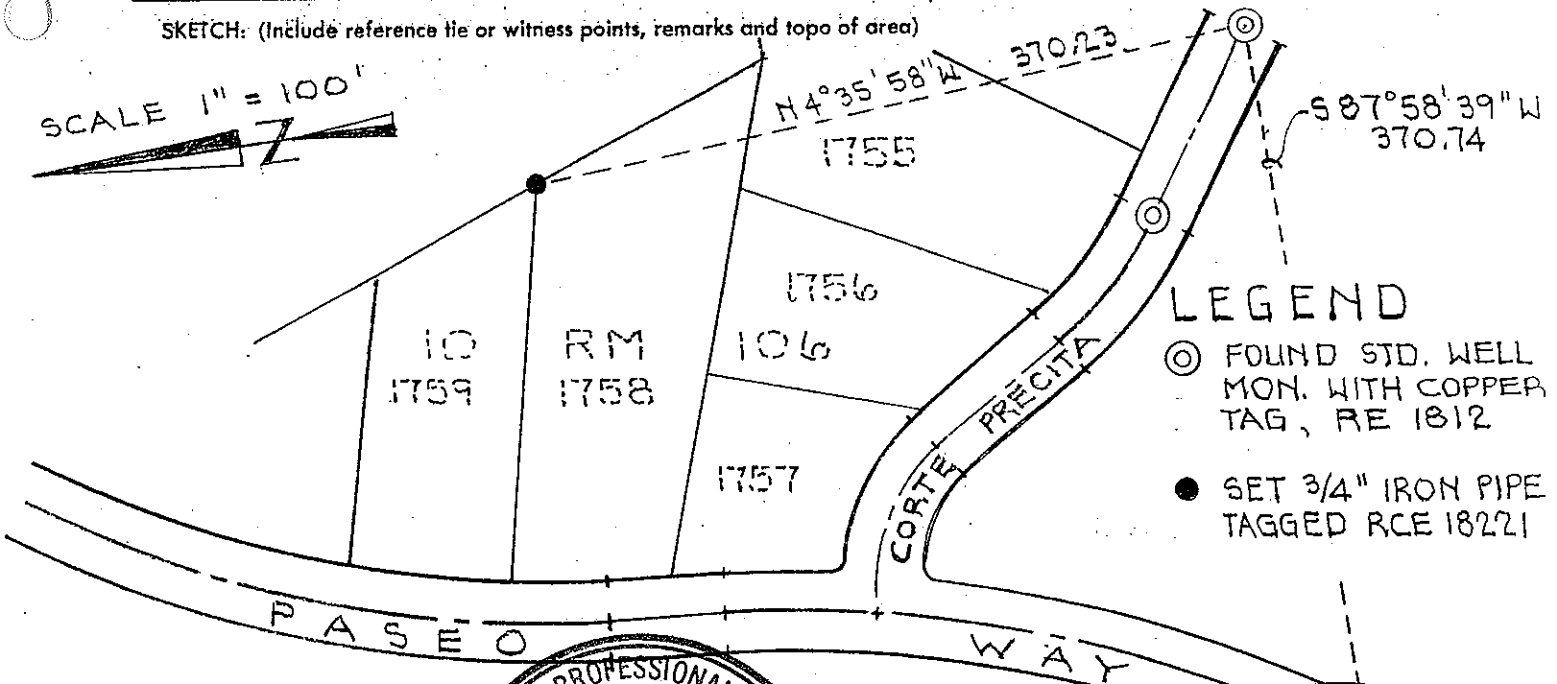
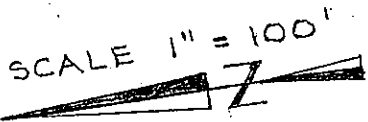
PHYSICAL DESCRIPTION OF MONUMENTS REBUILT OR PERPETUATED

SET 3/4" IRON PIPE TAGGED RCE 18221 FOR THE NORTH EAST CORNER OF LOT 1758 10 R.M. 106, MARIN COUNTY RECORDS

Larkspur

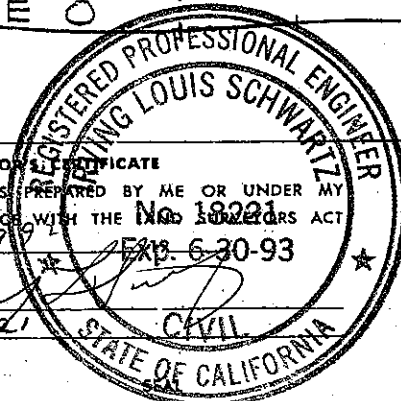
CALIFORNIA COORDINATE SYSTEM ORDER: FIRST SECOND THIRD
STATIONS USED: NGS (USC & GS) STATE COUNTY OTHER STATION _____ STATION _____
ZONE _____ ELEVATION _____ NORTHINGS (Y) _____ EASTINGS (X) _____

SKETCH: (Include reference tie or witness points, remarks and topo of area)

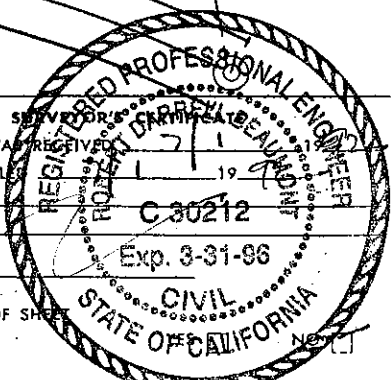


LEGEND

- ⊙ FOUND STD. WELL MON. WITH COPPER TAG, RE 1812
- SET 3/4" IRON PIPE TAGGED RCE 18221



SURVEYOR'S CERTIFICATE
THIS CORNER RECORD WAS PREPARED BY ME OR UNDER MY DIRECTION IN CONFORMANCE WITH THE SURVEYORS ACT ON JUNE 29, 1994 EXP. 6-30-93
SIGNED: _____
L.S. or R.C.E. No. 18221



COUNTY SURVEYOR: _____
THE CORNER RECORD WAS RECEIVED AND EXAMINED AND FILED BY: _____ TITLE: _____
DOCUMENT No. _____
STATEMENT ON BACK OF SHEET