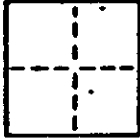


### CORNER RECORD

COUNTY OF Marin T. \_\_\_\_\_ R. \_\_\_\_\_ MERIDIAN CALIFORNIA  
 CORNER TYPE: GOVT. CORNER  MEANDER  RANCHO  CONTROL  OTHER   
 CORNER IDENTIFICATION — DATE OF VISIT October 1987



CORNER — LEFT AS FOUND  FOUND AND TAGGED  REESTABLISHED OBLITERATED CORNER  RESULT   
 PHYSICAL DESCRIPTION OF CORNER FOUND, EVIDENCE AND METHOD USED TO IDENTIFY OR REESTABLISH

Found standard street monuments as shown on Recorded Map (10 RM 35)

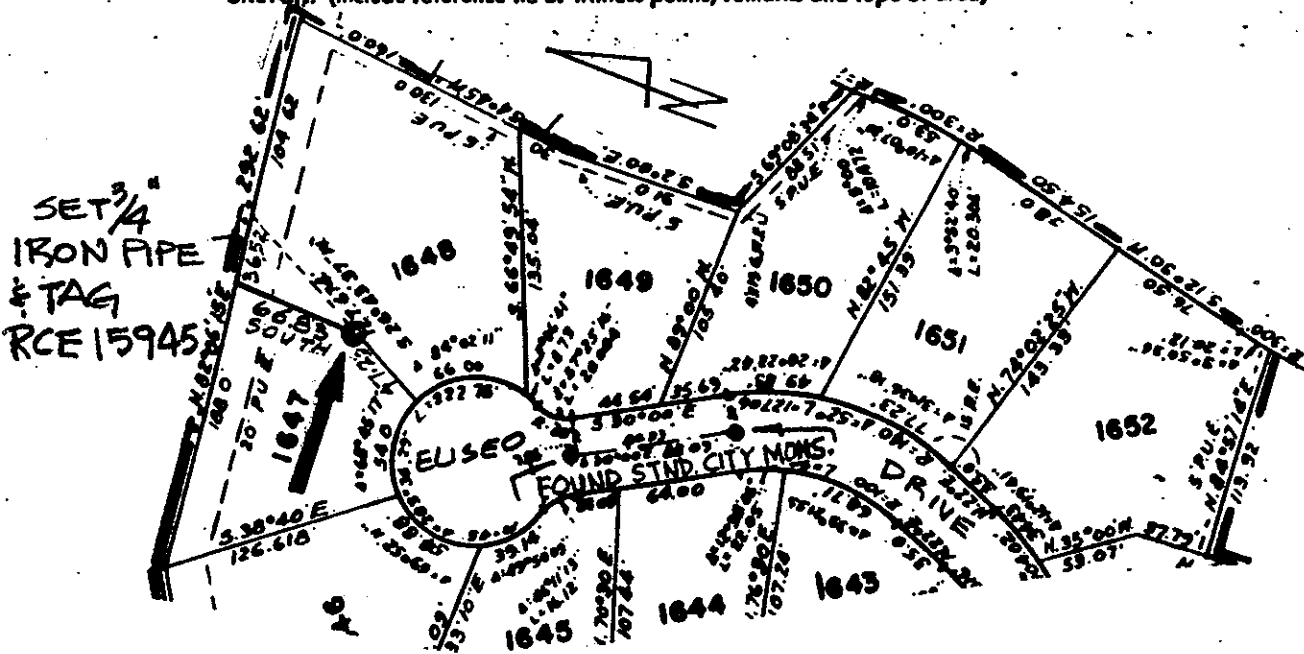
## AP # 70-341-30

PHYSICAL DESCRIPTION OF MONUMENTS RESULT OR PERPETUATED

Set 3/4" iron pipe and tag RCE 15945

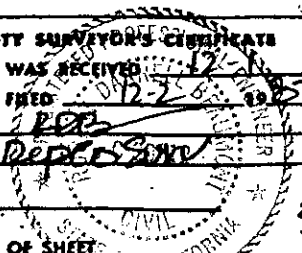
CALIFORNIA COORDINATE SYSTEM ORDER: FIRST  SECOND  THIRD   
 STATIONS USED: NGS (USC & GS)  STATE  COUNTY  OTHER  STATION \_\_\_\_\_ STATION \_\_\_\_\_  
 ZONE \_\_\_\_\_ ELEVATION \_\_\_\_\_ NORTHINGS (N) \_\_\_\_\_ EASTINGS (E) \_\_\_\_\_

SKETCH: (Include reference tie or witness points, remarks and topo of area)



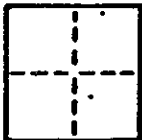
**SURVEYOR'S CERTIFICATE**  
 CORNER RECORD WAS PREPARED BY ME OR UNDER MY  
 SUPERVISION IN CONFORMANCE WITH THE LAND SURVEYORS ACT  
 OF October 1987  
 SIGNED: W. Edward Nite  
 L.S. or R.C.E. No.: 15945

**COUNTY SURVEYOR'S CERTIFICATE**  
 THE CORNER RECORD WAS RECEIVED 12-28-87  
 AND EXAMINED AND FILED 12-28-87  
 BY: RCS  
 TITLE: Recessed  
 DOCUMENT No. \_\_\_\_\_  
 STATEMENT ON BACK OF SHEET OF CALIFORNIA



# CORNER RECORD

COUNTY OF Marin T. 1 R. 1 MERIDIAN CALIFORNIA  
 CORNER TYPE: GOVT. CORNER  MEANDER  RANCHO  CONTROL  OTHER   
 CORNER IDENTIFICATION — DATE OF VISIT October 19 87



CORNER — LEFT AS FOUND  FOUND AND TAGGED  REESTABLISHED OBLITERATED CORNER  RESULT

PHYSICAL DESCRIPTION OF CORNER FOUND, EVIDENCE AND METHOD USED TO IDENTIFY OR REESTABLISH

Found standard street monuments as shown on Recorder Map (10 RM 35)

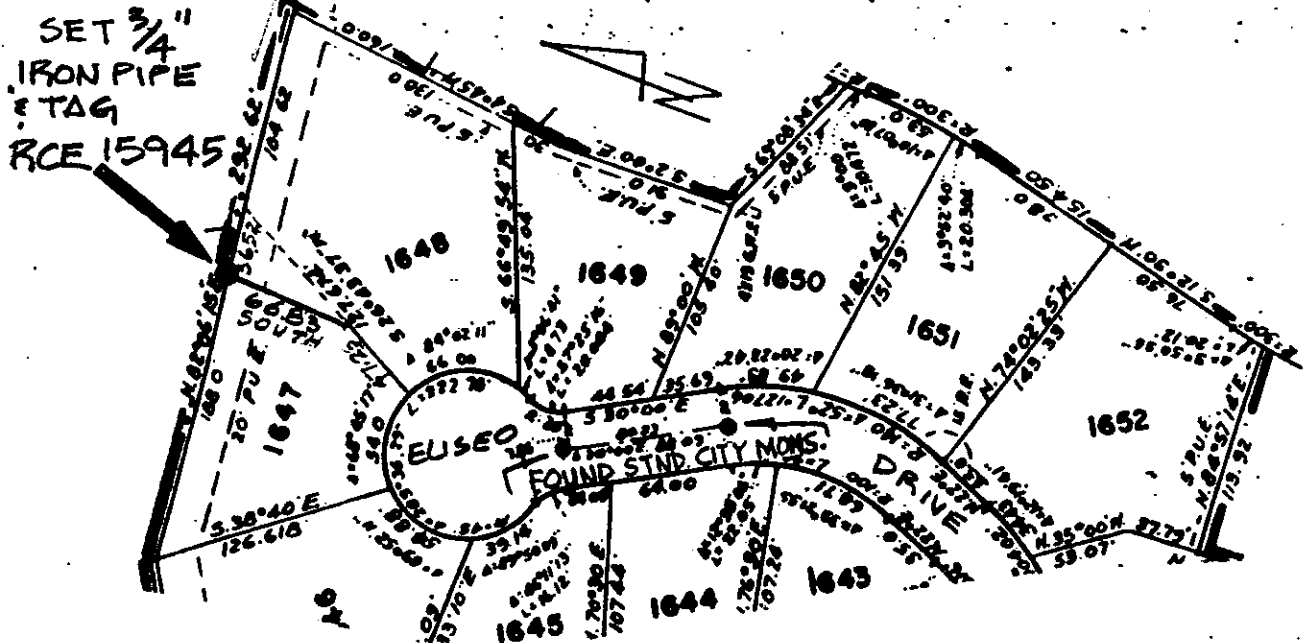
**AP # 70-341-30**

PHYSICAL DESCRIPTION OF MONUMENTS RESULT OR PERPETUATED

Set 3/4" iron pipe and tag RCE 15945

CALIFORNIA COORDINATE SYSTEM ORDER: FIRST  SECOND  THIRD   
 STATIONS USED: NGS (USC & GS)  STATE  COUNTY  OTHER  STATION \_\_\_\_\_ STATION \_\_\_\_\_  
 ZONE \_\_\_\_\_ ELEVATION \_\_\_\_\_ NORTHINGS (Y) \_\_\_\_\_ EASTINGS (X) \_\_\_\_\_

SKETCH: (Include reference tie or witness points, remarks and topo of area)

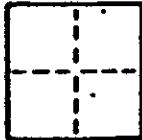


**SURVEYOR'S CERTIFICATE**  
 CORNER RECORD WAS PREPARED BY ME OR UNDER MY  
 SUPERVISION IN CONFORMANCE WITH THE LAND SURVEYORS ACT  
 OF October 19 87  
 SIGNED: W. Edward Nute  
 L.S. or R.C.E. No.: 15945

COUNTY SURVEYOR'S CERTIFICATE  
 THE CORNER RECORD WAS RECEIVED, EXAMINED AND FILED  
 AND EXAMINED AND FILED  
 BY: [Signature]  
 TITLE: Deputy County Surveyor  
 DOCUMENT No. \_\_\_\_\_  
 STATEMENT ON BACK OF SHEET \_\_\_\_\_  
 3-31-88

# CORNER RECORD

COUNTY OF Marin T. \_\_\_\_\_ R. \_\_\_\_\_ MERIDIAN \_\_\_\_\_ CALIFORNIA  
 CORNER TYPE: GOVT. CORNER  MEANDER  RANCHO  CONTROL  OTHER   
 CORNER IDENTIFICATION — DATE OF VISIT October 19 87



CORNER — LEFT AS FOUND  FOUND AND TAGGED  REESTABLISHED OBLITERATED CORNER  RESULT

PHYSICAL DESCRIPTION OF CORNER FOUND; EVIDENCE AND METHOD USED TO IDENTIFY OR REESTABLISH

Found standard street monuments as shown on Recorded Map (10 RM 35)

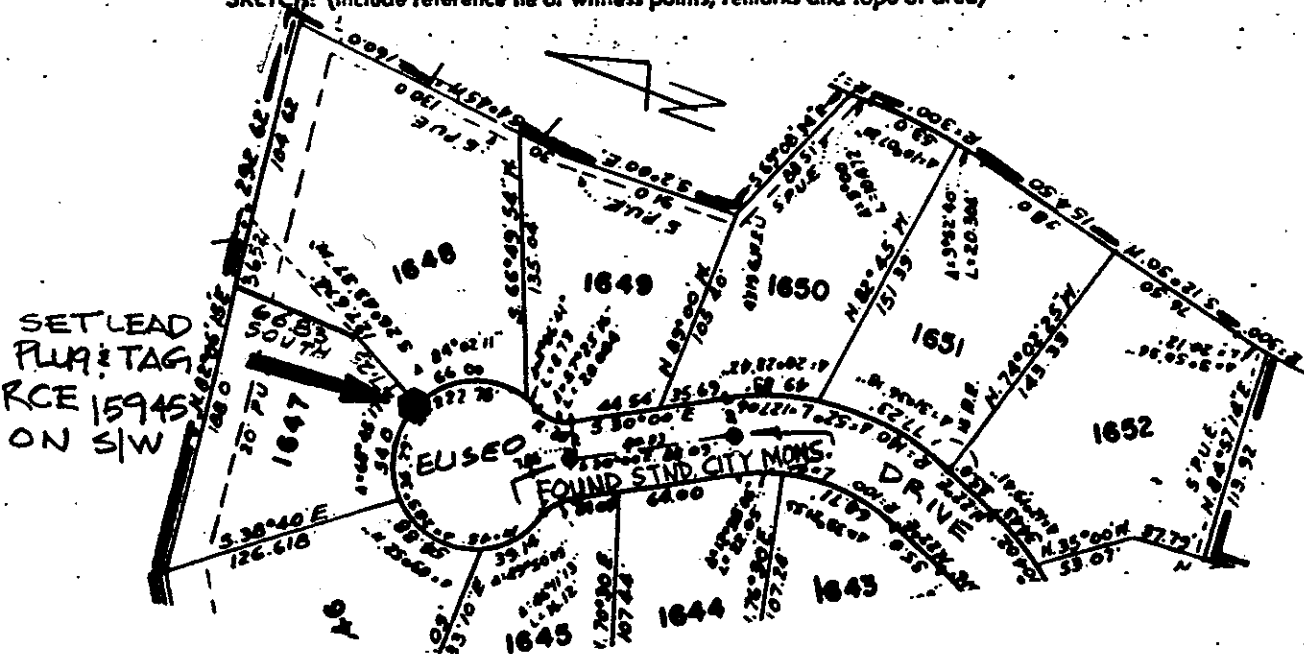
**AP # 70-341-30**

PHYSICAL DESCRIPTION OF MONUMENTS REBUILT OR PERPETUATED

Set lead plug and tag RCE 15945 on S/W

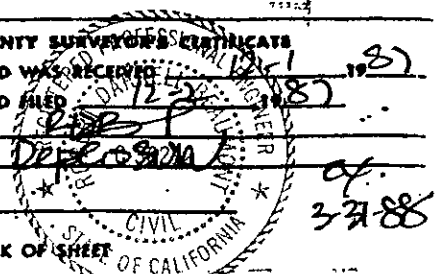
CALIFORNIA COORDINATE SYSTEM ORDER: FIRST  SECOND  THIRD   
 STATIONS USED: NGS (USC & GS)  STATE  COUNTY  OTHER  STATION \_\_\_\_\_ STATION \_\_\_\_\_  
 ZONE \_\_\_\_\_ ELEVATION \_\_\_\_\_ NORTHINGS (N) \_\_\_\_\_ EASTINGS (E) \_\_\_\_\_

SKETCH: (Include reference tie or witness points, remarks and topo of area)



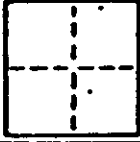
**SURVEYOR'S CERTIFICATE**  
 CORNER RECORD WAS PREPARED BY ME OR UNDER MY DIRECTION IN CONFORMANCE WITH THE LAND SURVEYORS ACT  
 DATE October 19 87  
 SIGNED: W. Edward Nute  
 R.C.E. No.: 15,945

**COUNTY SURVEYOR'S CERTIFICATE**  
 THE CORNER RECORD WAS RECEIVED AND EXAMINED AND FILED  
 BY: [Signature]  
 TITLE: Deputy  
 DOCUMENT No. \_\_\_\_\_  
 STATEMENT ON BACK OF SHEET



# CORNER RECORD

COUNTY OF Marin T. 2 MERIDIAN CALIFORN  
 CORNER TYPE: GOVT. CORNER  MEANDER  RANCHO  CONTROL  OTHER   
 CORNER IDENTIFICATION - DATE OF VISIT October 19 87



CORNER - LEFT AS FOUND  FOUND AND TAGGED  REESTABLISHED OBLITERATED CORNER  RESULT

PHYSICAL DESCRIPTION OF CORNER FOUND; EVIDENCE AND METHOD USED TO IDENTIFY OR REESTABLISH

Found standard street monuments as shown on Recorded Map (10 RM 35)

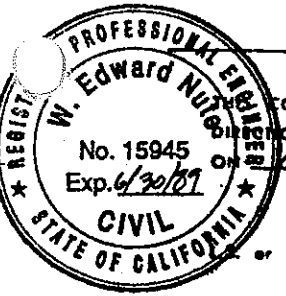
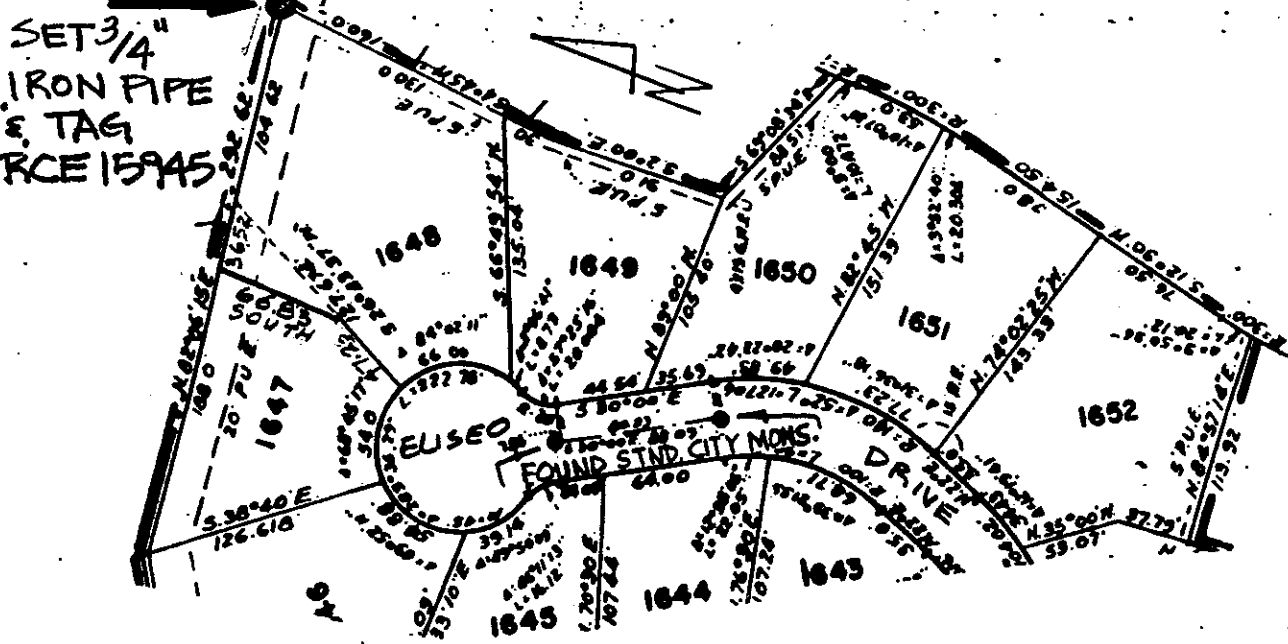
**AP # 70-341-30**

PHYSICAL DESCRIPTION OF MONUMENTS REBUILT OR PERPETUATED

Set 3/4" iron pipe and tag RCE 15945

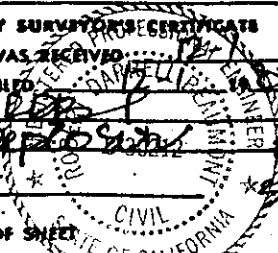
CALIFORNIA COORDINATE SYSTEM ORDER: FIRST  SECOND  THIRD   
 STATIONS USED: NGS (USC & GS)  STATE  COUNTY  OTHER  STATION \_\_\_\_\_ STATION \_\_\_\_\_  
 ZONE \_\_\_\_\_ ELEVATION \_\_\_\_\_ NORTHINGS (7) \_\_\_\_\_ EASTINGS (2) \_\_\_\_\_

SKETCH: (Include reference tie or witness points, remarks and topo of area)



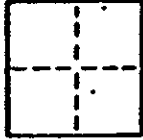
**SURVEYOR'S CERTIFICATE**  
 CORNER RECORD WAS PREPARED BY ME OR UNDER MY  
 IN CONFORMANCE WITH THE LAND SURVEYORS ACT  
 ON October 19 87  
 SIGNED: W. Edward Nutt  
 or R.C.E. No.: 15945

**COUNTY SURVEYOR'S CERTIFICATE**  
 THE CORNER RECORD WAS RECEIVED 12/15/87  
 AND EXAMINED AND FILED 12/15/87  
 BY: [Signature]  
 TITLE: Deputy Surveyor  
 DOCUMENT No. \_\_\_\_\_  
 STATEMENT ON BACK OF SHEET



# CORNER RECORD

COUNTY OF Marin T. 1 R. 1 MERIDIAN CALIFORN  
 CORNER TYPE: GOVT. CORNER  MEANDER  RANCHO  CONTROL  OTHER   
 CORNER IDENTIFICATION — DATE OF VISIT October 1987



CORNER — LEFT AS FOUND  FOUND AND TAGGED  REESTABLISHED OBLITERATED CORNER  RESULT

PHYSICAL DESCRIPTION OF CORNER FOUND, EVIDENCE AND METHOD USED TO IDENTIFY OR REESTABLISH

Found standard street monuments as shown on Recorded Map (10 RM 35)

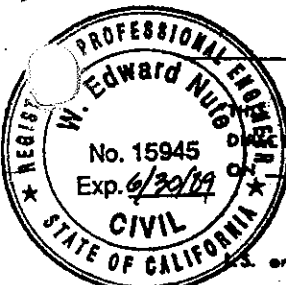
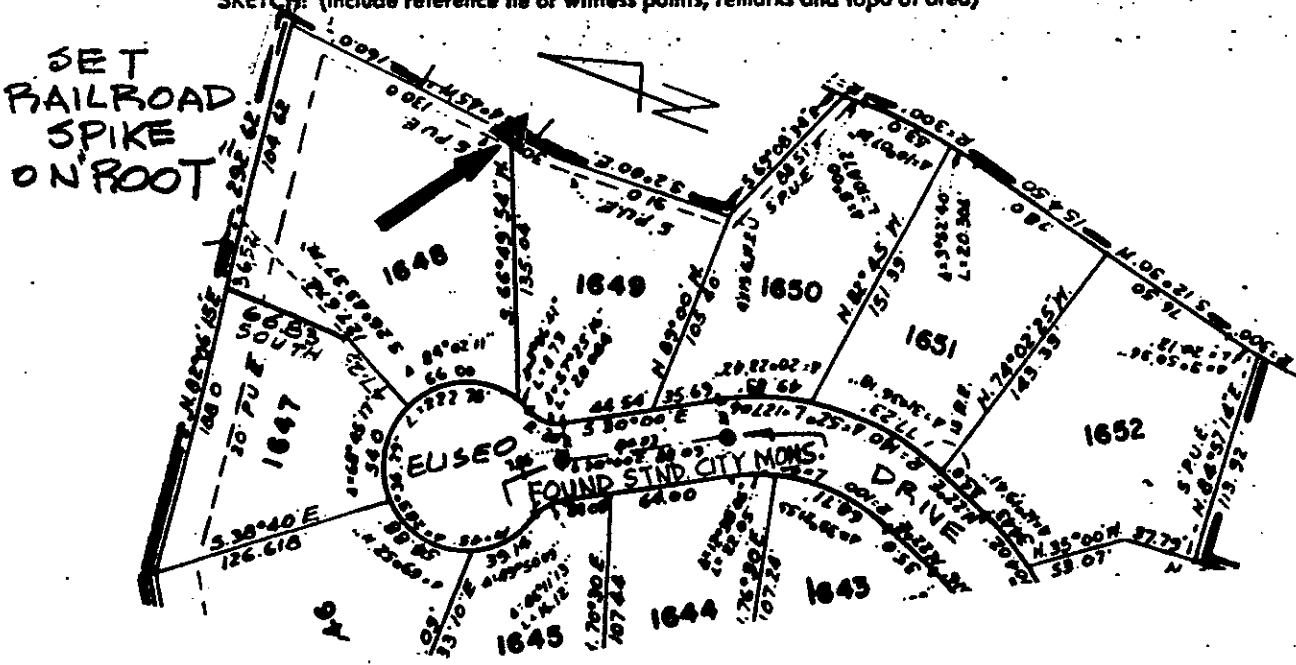
**AP # 70-341-30**

PHYSICAL DESCRIPTION OF MONUMENTS REBUILT OR PERPETUATED

Set railroad spike on "Root"

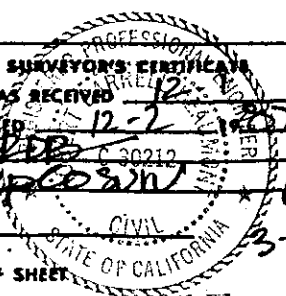
CALIFORNIA COORDINATE SYSTEM ORDER: FIRST  SECOND  THIRD   
 STATIONS USED: NGS (USC & GS)  STATE  COUNTY  OTHER  STATION \_\_\_\_\_ STATION \_\_\_\_\_  
 ZONE \_\_\_\_\_ ELEVATION \_\_\_\_\_ NORTHINGS (N) \_\_\_\_\_ EASTINGS (E) \_\_\_\_\_

SKETCH: (Include reference tie or witness points, remarks and topo of area)



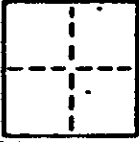
**SURVEYOR'S CERTIFICATE**  
 CORNER RECORD WAS PREPARED BY ME OR UNDER MY  
 SUPERVISION IN CONFORMANCE WITH THE LAND SURVEYORS ACT  
 OF CALIFORNIA ON October 1987  
 SIGNED: W. Edward Nugent  
 No. or R.C.E. No.: 15,945

**COUNTY SURVEYOR'S CERTIFICATE**  
 THE CORNER RECORD WAS RECEIVED 12-2-87 AND EXAMINED AND FILED 12-2-87  
 BY: [Signature] TITLE: Deputy  
 DOCUMENT No. \_\_\_\_\_ STATEMENT ON BACK OF SHEET 3-21-88



# CORNER RECORD

COUNTY OF Marin T. \_\_\_\_\_ E. \_\_\_\_\_ MERIDIAN CALIFORNIA  
 CORNER TYPE: GOV'T. CORNER  MEANDER  RANCHO  CONTROL  OTHER   
 CORNER IDENTIFICATION — DATE OF VISIT October 1987



CORNER — LEFT AS FOUND  FOUND AND TAGGED  REESTABLISHED OBLITERATED CORNER  RESULT

PHYSICAL DESCRIPTION OF CORNER FOUND, EVIDENCE AND METHOD USED TO IDENTIFY OR REESTABLISH

Found standard street monuments as shown on Recorded Map (10 RM 35)

**AP # 70-341-30**

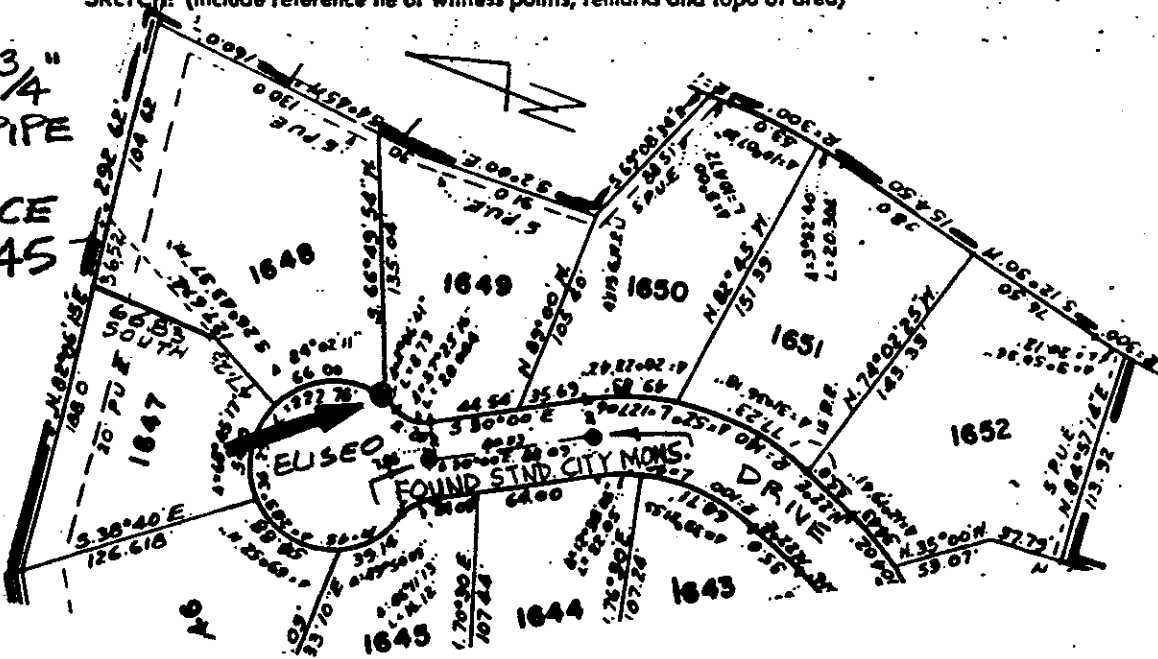
PHYSICAL DESCRIPTION OF MONUMENTS REBUILT OR PERPETUATED

Set 3/4" iron pipe and tag RCE 15945

CALIFORNIA COORDINATE SYSTEM ORDER: FIRST  SECOND  THIRD   
 STATIONS USED: NGS (USC & GS)  STATE  COUNTY  OTHER  STATION \_\_\_\_\_ STATION \_\_\_\_\_  
 ZONE \_\_\_\_\_ ELEVATION \_\_\_\_\_ NORTHINGS (Y) \_\_\_\_\_ EASTINGS (X) \_\_\_\_\_

SKETCH: (Include reference tie or witness points, remarks and topo of area)

SET 3/4" IRON PIPE  
TAG RCE 15945



SURVEYOR'S CERTIFICATE  
 CORNER RECORD WAS PREPARED BY ME OR UNDER MY SUPERVISION IN CONFORMANCE WITH THE LAND SURVEYORS ACT  
 ON October 1987  
 SIGNED: W. Edward Nute  
 or R.C.E. No.: 15945

COUNTY SURVEYOR'S CERTIFICATE  
 THE CORNER RECORD WAS RECEIVED AND EXAMINED AND FILED 12-1-87 1987  
 BY [Signature]  
 TITLE: Deputy  
 DOCUMENT No. 3-3188  
 STATEMENT ON BACK OF SHEET