

L. A. Stevens & Associates, Inc.  
Professional Land Surveyors  
Novato, California

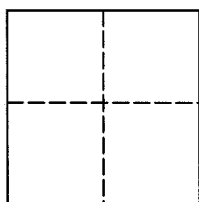
**Lands of Biagini**  
**Job #: 14-1609**

**CORNER RECORD**

Document Number 070-341-17

City of Larkspur, County of Marin, California

Brief Legal Description: Being Lot 1643 as shown on that certain map entitled, "Map of Greenbrae Sub. No. Twelve" filed in Volume 10 of Maps at Page 35, Marin County Records.



**CORNER TYPE**

**COORDINATES (Optional)**

Government Corner  Control

Meander  Property

Rancho  Other

Date of Survey September 29, 2014

N \_\_\_\_\_

E \_\_\_\_\_

Zone \_\_\_\_\_ NAD27  NAD83

NAD 83 Epoch \_\_\_\_\_

Elev. \_\_\_\_\_

Vert. Datum: NGVD29  NAVD88

Meas. Units: Metric  Imperial

**Corner -** Left as found  Found and tagged  Established  Reestablished  Rebuilt

Identification and type of corner found: Evidence used to identify or procedure used to establish or reestablish the corner:  
See Page 2 of 2 for additional information

A description of the physical condition of the monument as found and as set or reset:  
See Page 2 of 2 for additional information

**SURVEYOR'S STATEMENT**

This Corner Record was prepared by me or under my direction in conformance with  
The Land Surveyor's Act on September 29, 2014.

Signed [Signature] P.L.S. 6649



**COUNTY SURVEYOR'S STATEMENT**

This Corner Record was received 10/07/2014

and examined and filed OCTOBER 31, 2014

Signed [Signature] P.L.S. or R.C.E. No. 7821

Title DEPUTY



County Surveyors' Comment \_\_\_\_\_

All distances shown are in feet and decimals thereof

# LEGEND

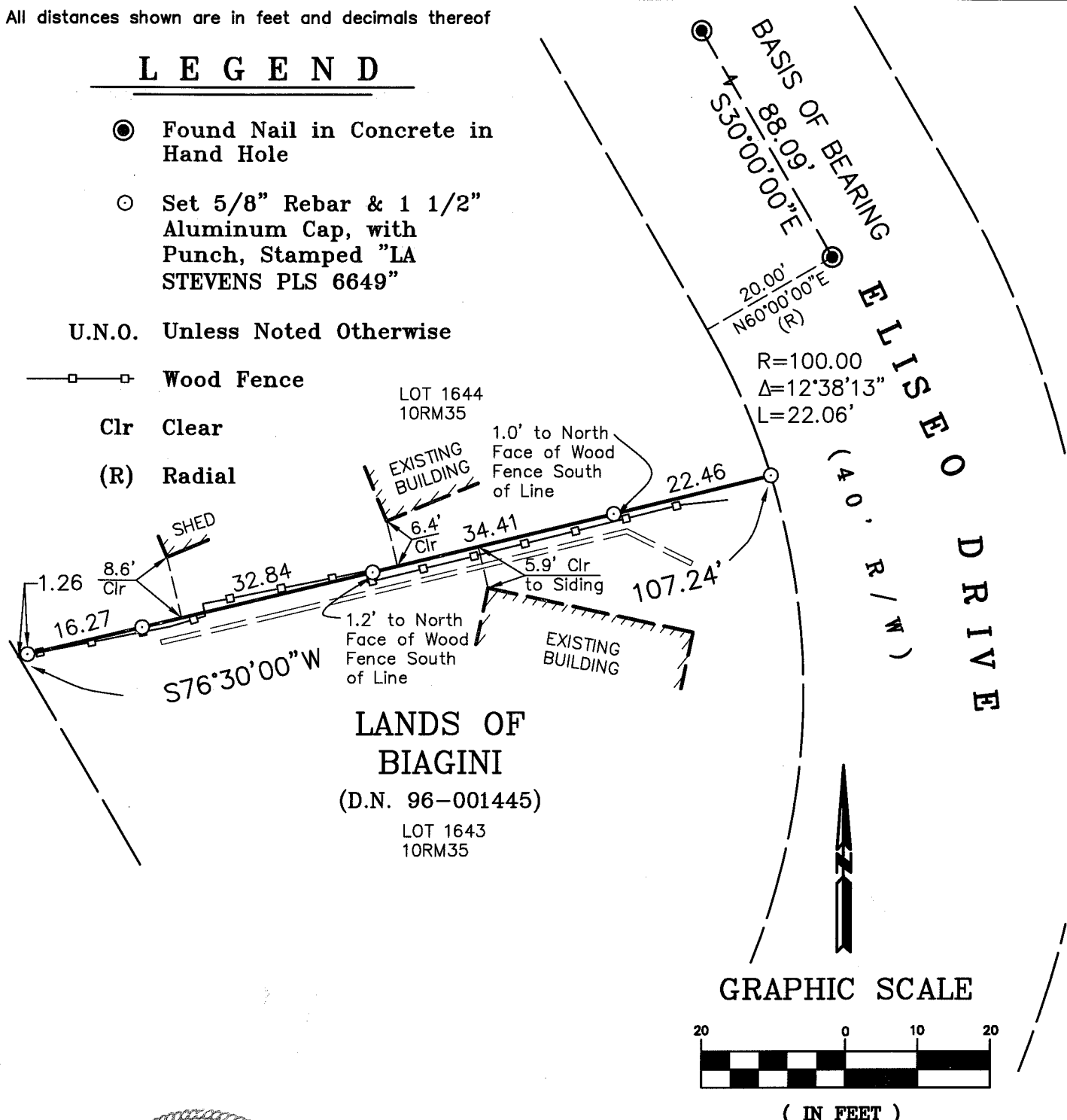
- Found Nail in Concrete in Hand Hole
- Set 5/8" Rebar & 1 1/2" Aluminum Cap, with Punch, Stamped "LA STEVENS PLS 6649"

U.N.O. Unless Noted Otherwise

—□— Wood Fence

Clr Clear

(R) Radial



Lawrence A. Stevens, PLS 6649

## Corner Record Lands of Biagini

(Lot 1643, 10 RM 35)

Larkspur Marin County California  
Scale: 1" = 20' September 2014

**L.A. Stevens & Associates, Inc.**

Professional Land Surveyors \* (415) 382-7713  
7 Commercial Blvd., Suite 1 \* Novato, CA 94949

Job # 14-1609

Page 2 Of 2